



SYSTEC™
systems ♦ technology

GENERAL SERVICES ADMINISTRATION

2008 Customer Price Guide

Authorized Federal Supply Schedule Price List



SMALL BUSINESS



GSA SCHEDULE FOR OFFICE IMAGING & DOCUMENT SOLUTIONS

FSC GROUP 36

Special Item Numbers

50-163 – Mail Management Processing Systems and Related Software

51-504 – Records Management Services

165-205 – Office Filing, Storage Systems and Solutions

Business Size:

Small Business

Contract Number:

GS-25F-0046S

Period Covered by Contract:

September 12, 2011 through September 11, 2016

On-line access to contract ordering information, terms and conditions, up-to-date pricing, and the option to create an electronic delivery order are available through GSA Advantage — a menu-driven database system.

Visit GSA Advantage at www.GSA Advantage.gov for SYSTEC pricing and catalog.

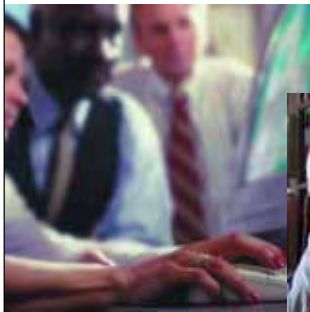


From space management to workflow efficiency, from timeliness to your bottom line, SYSTEC partners have the products and services you need to make the most of your space, your time and your money. We provide decades of experience and product knowledge – all from a single source.

TOTAL-SYSTEMS SOLUTIONS

FILING PRODUCTS AND TECHNOLOGY

Your documents are valuable assets to your organization and our professionals provide complete solutions that will keep documents organized and accessible, while increasing your organization's productivity. Whether it's converting to a new filing system or enhancing an existing one, we have the supplies and technology products to help you reach your goals, including a complete line of custom or standard folder products and label systems.



PROFESSIONAL SERVICES

Our professional business services help you achieve instant access to information and control over knowledge-based assets by combining the right products and services to maximize space and productivity. If you need to purge, merge, convert, image or destroy your records, rely on our skilled team of professionals to free up your staff's time by handling projects from start to finish, on-site to off-site, without disturbing ongoing work.

STORAGE SOLUTIONS

Your individual storage and space-planning requirements are unique and our experts will tailor solutions to fit your needs. We offer a variety of storage solutions that will allow your organization to access data and materials quickly and efficiently, while making optimal use of space. Select from a wide variety of space-saving solutions including mobile systems, rotary storage, space-efficient cabinets, or linear and lateral systems. We also offer an array of multi-media storage options, shelving solutions and filing cabinets.



Ordering Information.....4

SYSTEC Group /Authorized Dealers.....6-7

STORAGE SOLUTIONS

Storage Systems.....8-12
MobilStor, EasyStor Lateral, EasyStor Linear, RotaryStor

Shelving.....13- 21
4-post, Stationary, 4-post X-ray, Case-type, File Dividers

Heavy-duty Shelving.....22-25
Wide-span, Clip-type

ThinFile Filing Cabinets.....26-28
Letter size, Legal size, Cabinets with Drawers

GemTrac Filing Cabinets.....29
Exterior Panels, Media GemTrac

MediaStor Media Storage.....30-33
Roll Film, Fiche, Tape Cassette, Tape & Disc, Microfilm, Data Media

SafeTec Fire-Resistant Storage.....34-38
Water-Resistant Series, Insulated Files, Side Tab Filing Cabinets, Record and Media Safes, Media Cabinets / Safes, Insulated Vault and File Room Doors

TECHNOLOGY PRODUCTS

SysTrac Document Tracking Software.....39
Software, Accessories, Scanning Hardware, Professional Services

Label Print Software.....40
Label Print Software, Label Print Design, Maintenance and Support

PROFESSIONAL SERVICES

Records Management Services.....41- 46
Service Descriptions, Service and Equipment Rates

- 1a.** Authorized Special Item Numbers (SINs). Pricing for offered SINs begins on page 8.
#50-163 – Mail Management Processing Systems and Related Software
#51-504 – Records Management Services
#165-205 – Office Filing, Storage Systems and Solutions
- 1b.** Lowest priced model number and lowest unit price for that model for each SIN awarded in the contract:
#50-163 – See pricing starting on page 8
#51-504 – See pricing starting on page 8
#165-205 – See pricing starting on page 8
- 2.** Maximum order:
#50-163 – \$1,000,000
#51-504 – \$350,000
#165-205 – \$1,000,000
- 3.** Minimum order: **\$100.00**
- 4.** Geographic coverage (delivery area): **Nationwide**
- 5.** Point(s) of production (city, county, and state or foreign country): **The United States of America**
- 6.** Discount from list prices or statement of net price: **Government prices are net**
- 7.** Quantity discounts: **None**
- 8.** Prompt payment terms: **None, net 30 days**
- 9a.** Notification that Government purchase cards are accepted below the micropurchase threshold (\$2,500).
- 9b.** Notification that Government purchase cards are accepted above the micropurchase threshold (\$2,500).
- 10.** Foreign items (list items by country of origin): **Not Applicable**
- 11a.** Time of delivery: **30 Days ARO for items that are in-stock**
- 11b.** Items available for expedited delivery: **Not Applicable**
- 11c.** Overnight and 2-day delivery: **Not Applicable**
- 11d.** Urgent Requirements: **Not Applicable**
- 12.** F.O.B. Point: **Destination to the 48 contiguous states and Washington D. C. and port of exit to Alaska, Hawaii and Puerto Rico.**
- 13a.** Ordering address:
SYSTEC Group LLC *or* SYSTEC Group LLC
2108A Silvernail Rd. C/O Dealer Name
Pewaukee, WI 53072-5526 2108A Silvernail Rd.
Pewaukee, WI 53072-5526
Phone: (262) 968-9014
Fax: (888) 980-8177
- 13b.** Ordering Procedures: **For supplies and services, the ordering procedures, and information on Blanket Purchase Agreements (BPA's), see the Federal Acquisition Regulation (FAR) 8.405-3.**
- 14.** Payment address:
Systec Group LLC
2108A Silvernail Rd.
Pewaukee, WI 53072-5526
Phone: (262) 968-9014
Fax: (888) 980-8177
- 15.** Warranty provision: **Standard Commercial Warranty**
- 16.** Export packing charges: **Not Applicable**
- 17.** Terms and conditions of Government purchase card acceptance (any thresholds above the micropurchase level): **None**
- 18.** Terms and conditions of rental, maintenance, and repair: **Not Applicable**
- 19.** Terms and conditions of installation: **Not Applicable**
- 20.** Terms and conditions of repair parts indicating date of parts price lists and any discounts from list prices: **Not Applicable**
- 20a.** Terms and conditions for any other services: **Not Applicable**
- 21.** List of service and distribution points: **See pages 6-7**
- 22.** List of participating dealers: **See pages 6-7**
- 23.** Preventive maintenance: **Not Applicable**
- 24.** Environmental attributes, e.g., recycled content, energy efficiency, and/or reduced pollutants: **Not Applicable**
- 25.** Data Universal Number System (DUNS) number: **159987093**
- 26.** Systec Group LLC is registered in the Central Contractor Registration (CCR) database. CAGE Code: **39XS0**

GENERAL SERVICES ADMINISTRATION

2008 Customer Price Guide



Storage & Shelving



Filing Products



Technology Solutions



Consulting & Services

SYSTEC GROUP
(Main Office)

2108A Silvernail Rd.
Pewaukee, WI 53072-5526
Phone: 262/968-9014
Fax: 888/980-8177
info@sys-tecgroup.com
Web: www.sys-tecgroup.com

ALABAMA

Walter H. Hopkins, Co.
(Corporate Office)
2125 Corporate Drive
Suite 109
Marietta, GA 30067
770/955-5025
Fax: 770/955-5037
Contact: Jim Hopkins
jhopskins@walterhopkins.com
PBS: Dora Yu
dyu@walterhopkins.com
Sales: Michele Sears
msears@walterhopkins.com
Web: www.walterhopkins.com

ALASKA

SYSTEC
(See Main Office)

ARIZONA

Concert Architectural Interiors
(Corporate Office)
5017 E. Washington Street
Suite 107
Phoenix, AZ 85034
602/265-1063
Fax: 602/265-1064
Contact: Greg Gawin
ggawin@concertai.com
PBS: Matt Gawin
mgawin@concertai.com
Web: www.concertai.com

ARKANSAS

Southwest Solutions Group
650 South Shackleford Road
Suite 400L
Little Rock, AR 72211
501/859-0675
Fax: 501/859-0674
Contact: Justin Story
jstory@southwestsolutions.com
Web: www.southwestsolutions.com

CALIFORNIA

SYSTEC
(See Main Office)

COLORADO

Improve Group, LLC
1422 Delgany
Suite 10
Denver, CO 80202
800/244-1452
Tel: 303/831-9652
Fax: 303/831-9658
Contact: Marvin Procter
mprocter@improvegroup.biz
Web: www.improvegroup.biz

CONNECTICUT

Systematics, Inc.
290 Pratt Street
Meriden, CT 06450-8600
203/634-7532
Fax: 203/634-7562
Contact: Tom Carmody
tcarmody@systematicsin.com
PBS: Scott Stratton
sstratton@systematicsin.com
Web: www.systematicsin.com

DELAWARE

Diversified Storage Solutions, Inc.
56 Bultwood Street
Norristown, PA 19401
610/239-5950
Fax: 610/239-5953
Contact: Bill Corbett
bill.corbett@ki.com
Web: www.todssi.com

FLORIDA

Patterson Pope
4720 Salisbury Road, #216
Jacksonville, FL 32256
904/396-4700
Fax: 904/493-6097
Contact: David Parr
dparr@pattersonpoppe.com
Web: www.pattersonpoppe.com

Patterson Pope
3620 Greenfield Drive
Marianna, FL 32446
850/482-8360
Contact: David Parr
dparr@pattersonpoppe.com
Web: www.pattersonpoppe.com

Patterson Pope
4180 St. Johns Parkway
Suite 1004
Sanford, FL 32771
800/432-6230
407/328-0688
Fax: 407/328-8188
Contact: David Parr
dparr@pattersonpoppe.com
Web: www.pattersonpoppe.com

Patterson Pope
7320 E. Fletcher Street
Tampa, FL 33637
813/626-3378
Fax: 407/328-8188
Contact: David Parr
dparr@pattersonpoppe.com
Web: www.pattersonpoppe.com

Patterson Pope
407 Circle East
Jupiter, FL 33458
561/315-8886
Contact: Chip Didden
cdidden734@aol.com
Web: www.pattersonpoppe.com

Patterson Pope
19637 Woodfield Circle
Fl. Myers, FL 33917
239/567-2587
Fax: 407/328-8188
Contact: David Parr
dparr@pattersonpoppe.com
Web: www.pattersonpoppe.com

Patterson Pope
2219 Hollywood Boulevard
Suite 102
Hollywood, FL 33020
954/921-9004
Fax: 407/328-8188
Contact: David Parr
dparr@pattersonpoppe.com
Web: www.pattersonpoppe.com

GEORGIA

Walter H. Hopkins, Co.
(Corporate Office)
2125 Corporate Drive
Suite 109
Marietta, GA 30067
770/955-5025
Fax: 770/955-5037
Contact: Jim Hopkins
jhopskins@walterhopkins.com
PBS: Dora Yu
dyu@walterhopkins.com
Sales: Michele Sears
msears@walterhopkins.com
Web: www.walterhopkins.com

HAWAII

SYSTEC
(See Main Office)

IDAHO

SYSTEC
(See Main Office)

ILLINOIS

Bradford Systems Corporation
(Corporate Office)
430 Country Club Drive
Bensenville, IL 60106
800/696-3453
630/350-3453
Fax: 630/350-3454
Contact: David Bradford
dwb@bradfordsystems.com
PBS: Kathy Connolly
kathleen.connolly@bradfordsystems.com
Web: www.bradfordsystems.com

Peterson Group
(Corporate Office)
938 South Highway Drive
Fenton, MO 63026
636/343-1515
Fax: 636/343-3588
Contact: Phil Peterson
philp@peterson.com
PBS: Curt Rogers
curtr@peterson.com
Web: www.peterson.com

INDIANA

Bradford Systems Corporation
(Corporate Office)
430 Country Club Drive
Bensenville, IL 60106
800/696-3453
630/350-3453
Fax: 630/350-3454
Contact: David Bradford
dwb@bradfordsystems.com
PBS: Kathy Connolly
kathleen.connolly@bradfordsystems.com
Web: www.bradfordsystems.com

Central Business Group
440 Commercial Drive
Suite 101
Louisville, KY 40223
502/244-8510
Fax: 502/244-8281
Web: www.centralbusinessgroup.com

IOWA

Midwest Storage Solutions
(Corporate Office)
5845 S. 118th Circle
Omaha, NE 68137
402/935-0357
Fax: 402/935-0361
Contact: Dave Fenner
davef@mss-1.com
Web: www.mss-1.com

KANSAS

Southwest Solutions Group
7718 N. Robinson Avenue
Suite A21 & A22
Oklahoma City, OK 73116
405/879-3448
Fax: 405/879-3370
Contact: Ray Streight
rstreight@southwestsolutions.com
Web: www.southwestsolutions.com

KENTUCKY

Central Business Group
440 Commercial Drive
Suite 101
Louisville, KY 40223
502/244-8510
Fax: 502/244-8281
Sales: David Simons
dsimons@centralbusinessgroup.com
Web: www.centralbusinessgroup.com

LOUISIANA

Associated Office Systems
(Corporate Office)
400 Poydras Street
Suite 1770
New Orleans, LA 70130
504/561-8400
Fax: 504/561-1155
Contact: Shelby Russ
sruss@thinkaos.com
PBS: Michael Mocklin
m.mocklin@thinkaos.com
Web: www.thinkaos.com

Associated Office Systems
2137-C Quail Run Drive
Suite B
Baton Rouge, LA 70808
225/766-5558
Fax: 225/766-1019
Sales: Dale Castrow
d.castro@thinkaos.com
Web: www.thinkaos.com

Associated Office Systems
3825 Gilbert
Suite 117
Shreveport, LA 71104
318/861-5940
Fax: 318/861-5935
Sales: Dale Castro
d.castro@thinkaos.com
Web: www.thinkaos.net

MAINE

Systematics, Inc.
550 Forest Avenue
Suite 208
Portland, ME 04101-2811
207/772-8558
Fax: 207/772-8388
Sales: Wayne Sharkey
wsharkey@systematicsin.com
Web: www.systematicsin.com

MARYLAND

Spacesaver Systems, Inc.
(Corporate Office)
10800 Connecticut Avenue
Kensington, MD 20895
301/933-9390
Fax: 301/933-8068
Contact: Amy Hamilton
amyh@ssi-md.com
PBS: Christina Speed
christinas@infolinx.com
Web: www.ssi-md.com

MASSACHUSETTS

Systematics, Inc.
(Corporate Office)
9 Otis Street
Westborough, MA 01581-3312
508/366-1306
Fax: 508/366-1307
Contact: Tom Schaefer
tschaefer@systematicsin.com
PBS: Anna Stratton
astratton@systematicsin.com
Web: www.systematicsin.com

MICHIGAN

Bradford Systems Corporation
(Corporate Office)
430 Country Club Drive
Bensenville, IL 60106
800/696-3453
630/350-3453
Fax: 630/350-3454
Contact: David Bradford
dwb@bradfordsystems.com
PBS: Kathy Connolly
kathleen.connolly@bradfordsystems.com
Web: www.bradfordsystems.com

MINNESOTA

Storage Systems Midwest
911 North Lyndale Drive
Suite 26
Appleton, WI 54914
262/650-7700
Fax: 920/730-1898
Sales: Aaron Koats
akoats@ssmidwest.com
Web: www.ssmidwest.com

MISSISSIPPI

Associated Office Systems
691 Harper Ridge
Brandon, MS 39047
601/981-6116
Fax: 601/981-6118
Sales: Johnathon Chappell
j.chappell@thinkaos.com
Web: www.thinkaos.com

MISSOURI

Peterson Group
(Corporate Office)
938 South Highway Drive
Fenton, MO 63026
636/343-1515
Fax: 636/343-3588
Contact: Phil Peterson
philp@peterson.com
PBS: Curt Rogers
curtr@peterson.com
Web: www.peterson.com

MONTANA

SYSTEC
(See Main Office)

NEBRASKA

Midwest Storage Solutions
(Corporate Office)
5845 S. 118th Circle
Omaha, NE 68137
402/935-0357
Fax: 402/935-0361
Contact: Dave Fenner
davef@mss-1.com
Web: www.mss-1.com

Midwest Storage Solutions
Foote Building
422 North Hastings Avenue
Hasting, NE 68901
402/462-5224
Fax: 402/462-5224
Contact: Tom Bosshardt
thomasb@mss-1.com
Web: www.mss-1.com

NEVADA

SYSTEC
(See Main Office)

NEW HAMPSHIRE

Systematics, Inc.
(Corporate Office)
9 Otis Street
Westborough, MA 01581-3312
508/366-1306
Fax: 508/366-1307
Contact: Tom Schaefer
tschaefer@systematicsin.com
PBS: Anna Stratton
astratton@systematicsin.com
Web: www.systematicsin.com

NEW JERSEY

Modern Office
(Corporate Office)
45 West 36th Street
New York, NY 10018
212/290-0440
Fax: 212/290-0455
Contact: Jeff Lejuez
lejuez@modernofficesystems.com
Contact: Joe Gherardi
joeg@modernofficesystems.com
Web: www.modernofficesystems.com

Diversified Storage Solutions
(Corporate Office)
56 Buttonwood Street
Norristown, PA 19401
610/239-5950
Fax: 610/239-5953
Contact: Bill Corbett
bill.corbett@ki.com
Web: www.todssi.com

NEW MEXICO

Improve Group, LLC
(Corporate Office)
3550 Pan American Freeway NE
Suite A
Albuquerque, NM 87107
800/244-1452
505/265-8709
Fax: 505-256-1240
Contact: Marvin Procter
mprocter@improvegroup.biz
Web: www.improvegroup.biz

NEW YORK

Inner Space Systems
(Corporate Office)
Orchard Ridge Corporate Park
301 Fields Lane
Brewster, NY 10509
845/277-7400
Fax: 845/277-7755
Contact: Dave Nesbitt
dave@innerspacesystems.com
PBS: Steve Williams
steve@innerspacesystems.com
Web: www.innerspacesystems.com

Inner Space Systems
381 Broadway
Albany, NY 12204
518/463-5254
Fax: 518/463-0216
Sales: Mike Wolk
mikew@innerspacesystems.com
Web: www.innerspacesystems.com

Modern Office
(Corporate Office)
45 West 36th Street
New York, NY 10018
212/290-0440
Fax: 212/290-0455
Contact: Jeff Lejuez
lejuez@modernofficesystems.com
Contact: Joe Gherardi
joeg@modernofficesystems.com
Web: www.modernofficesystems.com

NORTH CAROLINA

Patterson Pope
(Corporate Office)
3001 North Graham Street
Charlotte, NC 28206
704/523-4400
Fax: 704/523-4499
Contact: David Parr
dparr@pattersonpoppe.com
Web: www.pattersonpoppe.com

Patterson Pope
3714 Alliance Drive
Suite 304
Greensboro, NC 27407
336/855-3484
Contact: David Parr
dparr@pattersonpoppe.com
Web: www.pattersonpoppe.com

NORTH CAROLINA continued

Patterson Pope
180 Towerview Court
Cary, NC 27513
919/821-4650
Fax: 919/831-2278
Contact: David Parr
dparr@pattersonpoppe.com
Web: www.pattersonpoppe.com

NORTH DAKOTA

SYSTEC
(See Main Office)

OHIO

Central Business Group
(Corporate Office)
10839 Indeco Drive
Cincinnati, OH 45241
513/891-4430
Fax: 513/891-7029
Contact: David Simons
dsimons@centralbusinessgroup.com
Web: www.centralbusinessgroup.com

Central Business Group
325 Cramer Creek Court 206
Dublin, OH 43017
614/798-3559
Fax: 614/798-8092
Contact: Kevin Stoller
kstoller@centralbusinessgroup.com
Web: www.centralbusinessgroup.com

Central Business Group
9700 Rockside Road
Suite 160
Cleveland, OH 44125
216/524-8226
Fax: 216/524-9579
Contact: Kevin Stoller
kstoller@centralbusinessgroup.com
Web: www.centralbusinessgroup.com

Central Business Group
134 W. S. Boundary Street
Suite BB
Perrysburg, OH 43551
419/872-0144
Fax: 419/872-2636
Contact: Kevin Stoller
kstoller@centralbusinessgroup.com
Web: www.centralbusinessgroup.com

Central Business Group
Governors Square Office
1303-H Lyons Road
Dayton, OH 45458
937/291-8787
Fax: 937/291-8788
Contact: David Simmons
dsimmons@centralbusinessgroup.com
Web: www.centralbusinessgroup.com

OKLAHOMA

Southwest Solutions Group
7718 N Robinson Avenue
Suite A21 & A22
Oklahoma City, OK 73116
405/879-3348
Fax: 405/879-3370
Contact: Bruce Delp
bdelp@southwestsolutions.com
Web: www.southwestsolutions.com

OREGON

SYSTEC
(See Main Office)

PENNSYLVANIA

Diversified Storage Solutions
(Corporate Office)
56 Buttonwood Street
Norristown, PA 19401
610/239-5950
Fax: 610/239-5953
Contact: Bill Corbett
bill.corbett@ki.com
Web: www.todssi.com

RHODE ISLAND

Systematics, Inc.
(Corporate Office)
9 Otis Street
Westborough, MA 01581-3312
508/366-1306
Fax: 508/366-1307
Contact: Tom Schaefer
tschaefer@systematicsync.com
PBS: Scott Stratton
sstratton@systematicsync.com
Web: www.systematicsync.com

SOUTH CAROLINA

Patterson Pope
1200 Woodruff Road
Suite A3
Greenville, SC 29607
864/527-1254
Fax: 864/288-7937
Contact: David Parr
dparr@pattersonpoppe.com
Web: www.pattersonpoppe.com

Patterson Pope
152 Cannon Street
Suite C
Charleston, SC 29403
843/937-0092
Contact: David Parr
dparr@pattersonpoppe.com
Web: www.pattersonpoppe.com

SOUTH DAKOTA

SYSTEC
(See Main Office)

TENNESSEE

Central Business Group
9041 Executive Park Drive
Suite 142
Knoxville, TN 37923
865/690-0242
Fax: 865/690-0585
Contact: David Simons
dsimons@centralbusinessgroup.com
Web: www.centralbusinessgroup.com

Central Business Group
264 Malloy Station Road
Suite 11
Franklin, TN 37067
615/771-9812
Fax: 615/771-9946
Contact: David Simons
dsimons@centralbusinessgroup.com
Web: www.centralbusinessgroup.com

TEXAS

Southwest Solutions Group
(Corporate Office)
4355 Excel Parkway
Suite 300
Addison, TX 75001
800/803-1083
972/250-1970
Fax: 972/250-2229
Contact: Ray Streight
rstreight@southwestsolutions.com
PBS: Craig Crock
ccrock@southwestsolutions.com
Web: www.southwestsolutions.com

Southwest Solutions Group
600 Round Rock W. Drive
Suite 604
Round Rock, TX 78681
877/787-1328
512/336-1328
Fax: 512/336-1358
Sales: Troy Menchhofer
tmench@southwestsolutions.com
Web: www.southwestsolutions.com

Southwest Solutions Group
5123 N Loop 1604 West
Suite 100
San Antonio, TX 78249
866/558-6988
210/558-6988
Fax: 210/691-2238
Sales: Jim Smith
jsmith@southwestsolutions.com
Web: www.southwestsolutions.com

TEXAS continued

Southwest Solutions Group
6105 Brittlemore Road
Houston, TX 77041
800/229-4454
713/467-4454
Fax: 713/467-4484
Sales: Randy Brant
rbrant@southwestsolutions.com
Web: www.southwestsolutions.com

Improve Group, LLC
240 East Sunset Drive
El Paso, TX 79922
800/244-1452
Fax: 806/765-9784
Contact: Marvin Procter
mprocter@improvegroup.biz
Web: www.improvegroup.biz

Improve Group, LLC
Facilities Connection
240 East Sunset Drive
El Paso, TX 79922
800/244-1452
Fax: 915/533-0714
Contact: Marvin Procter
mprocter@improvegroup.biz
Web: www.improvegroup.biz

UTAH

SYSTEC
(See Main Office)

VERMONT

Systematics, Inc.
(Corporate Office)
9 Otis Street
Westborough, MA 01581-3312
508/366-1306
Fax: 508/366-1307
Contact: Tom Schaefer
tschaefer@systematicsync.com
PBS: Scott Stratton
sstratton@systematicsync.com
Web: www.systematicsync.com

VIRGINIA

Patterson Pope
PO Box 4711
Charlottesville, VA 22905
434/296-2713
Fax: 434/296-2790
Contact: David Parr
dparr@pattersonpoppe.com
Web: www.pattersonpoppe.com

Patterson Pope
227 Electric Road
Salem, VA 27153
540/389-7726
Fax: 540/389-9702
Contact: David Parr
dparr@pattersonpoppe.com
Web: www.pattersonpoppe.com

WASHINGTON

SYSTEC
(See Main Office)

WEST VIRGINIA

Spacesaver Systems, Inc.
(Corporate Office)
10800 Connecticut Avenue
Kensington, MD 20895
301/933-9390
Fax: 301/933-8068
Contact: Amy Hamilton
amyh@ssi-md.com
PBS: Christina Speed
christinas@infolinx.com
Web: www.ssi-md.com

WISCONSIN

Storage Systems Midwest
(Corporate Office)
N16 W23430 Stone Ridge Drive
Waukesha, WI 53188
262/650-7700
Fax: 262/650-7707
Contact: Randy Safrank
rsafrank@ssmidwest.com
Web: www.ssmidwest.com

Storage Systems Midwest
911 North Lyndale Drive
Suite 26
Appleton, WI 54914
262/650-7700
Fax: 920/730-1898
Sales: Aaron Koats
akoats@ssmidwest.com
Web: www.ssmidwest.com

Storage Systems Midwest
4706 E. Washington
Madison, WI 53704
608/244-8398
Fax: 608/244-5245
Sales: Sandra Freeman
sfreeman@ssmidwest.com
Web: www.ssmidwest.com

WYOMING

SYSTEC
(See Main Office)

District of Columbia

Spacesaver Systems, Inc.
(Corporate Office)
10800 Connecticut Avenue
Kensington, MD 20895
301/933-9390
Fax: 301/933-8068
Contact: Amy Hamilton
amyh@ssi-md.com
PBS: Christina Speed
christinas@infolinx.com
Web: www.ssi-md.com

AUTHORIZED DEALERS



Maximize your storage space with high-density mobile storage systems. When you eliminate wasted aisle space, you will either double your existing storage capacity or free up space for other functional areas. Available in manual, mechanically assisted or powered models with a range of safety and security features.

This model has a linear storage capacity of 5,000 filing or storage inches and offers your choice of a mechanical system or a powered system.

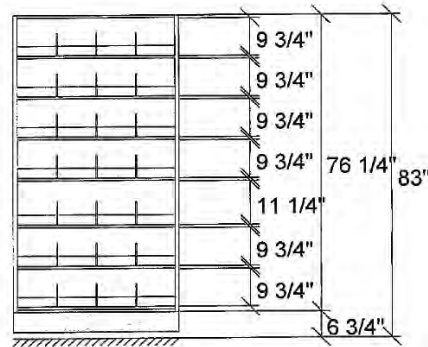
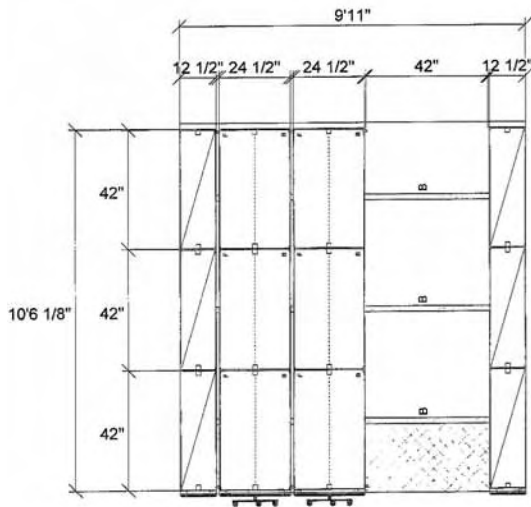
For a complete price list of all products & accessories, log on to www.systemcgroup.com and click GSA or go to www.gsaadvantage.gov.

STORAGE SYSTEMS

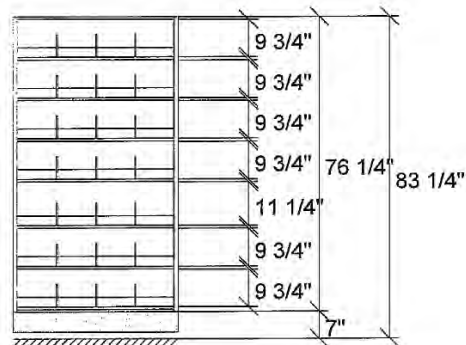
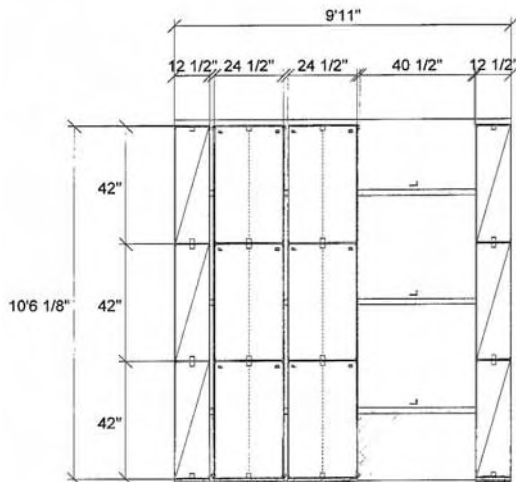
MobilStor 5000

High-Density Mobile Storage

ITEMID	ITEMDESCRIPTION	Wt. (lbs)	SYSTEC/GSA PRICE
SYMobilStor5000MO	Systec MobileStor 5000 - Mobile File system - mechanical operation: 9'11"W x 10'6"D x 83"H - 7 shelf openings	3858	\$11,740.53



ITEMID	ITEMDESCRIPTION	Wt. (lbs)	SYSTEC/GSA PRICE
SYMobilStor5000PO	Systec MobileStor 5000 - Mobile File system - powered operation: 9'11"W x 10'6"D x 83"H - 7 shelf openings	3910	\$15,028.17





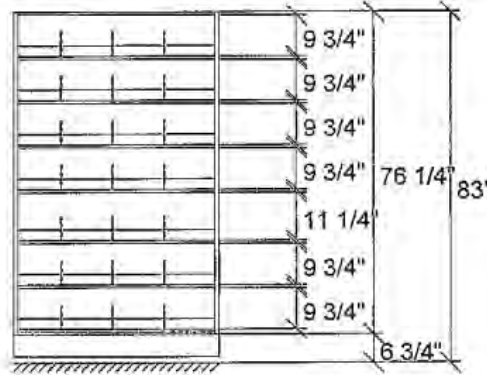
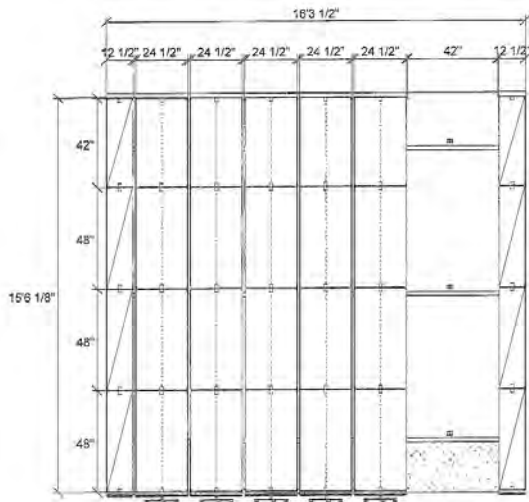
The linear storage capacity for this model is 25,000 filing/storage inches. It comes with your choice of an ergonomically designed mechanical system or a powered system.

Mechanically assisted systems are designed with ergonomic handles with easy movement no matter what the weight load.

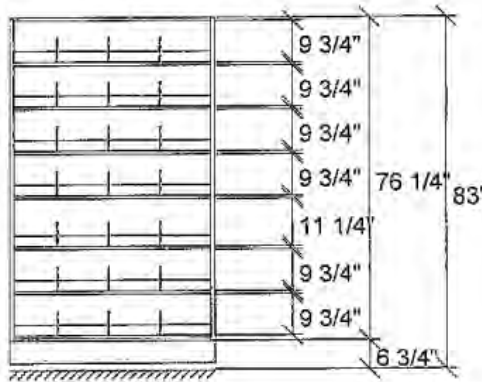
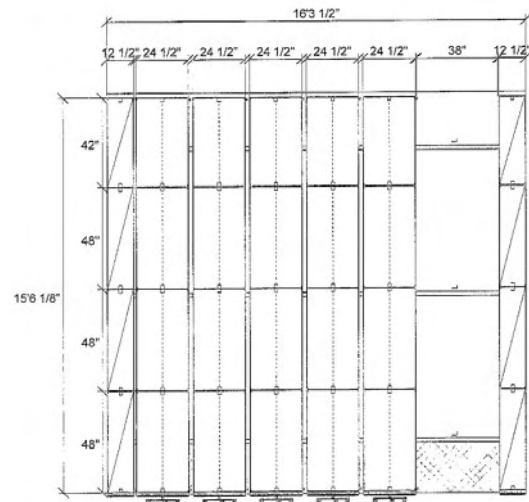
For a complete price list of all products & accessories, log on to www.systecgroup.com and click GSA or go to www.gsaadvantage.gov.

High-Density Mobile Storage

ITEMID	ITEMDESCRIPTION	Wt. (lbs)	SYSTEC/GSA PRICE
SYMobilStor25000MOPS	Systec MobileStor 15000 - Mobile File system - mechanical operation with passive safety. 16'4"W x 15'6"D x 83"H - 7 shelf openings	9863	\$33,501.18



ITEMID	ITEMDESCRIPTION	Wt. (lbs)	SYSTEC/GSA PRICE
SYMobilStor25000PO	Systec MobileStor 15000 - Mobile File system - powered operation: 16'4"W x 15'6"D x 83"H - 7 shelf openings	9934	\$37,325.84



STORAGE
SYSTEMS

MobilStor 25'000



Powered systems offer ease of use, protection and security for all of your stored assets. When the job is large or demands safety and security, powered systems with fire protection security, user safety and one-touch operation are the answer.

With a linear storage capacity of 50,000 inches, this model offers two types of powered systems—one with passive safety and the other with zero force safety.

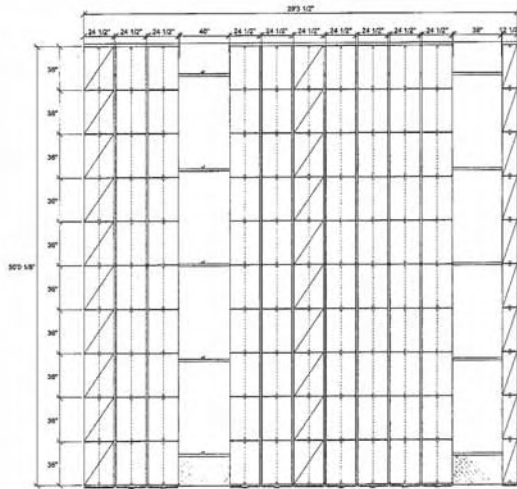
For a complete price list of all products & accessories, log on to www.systecgroup.com and click GSA or go to www.gsaadvantage.gov.

STORAGE SYSTEMS

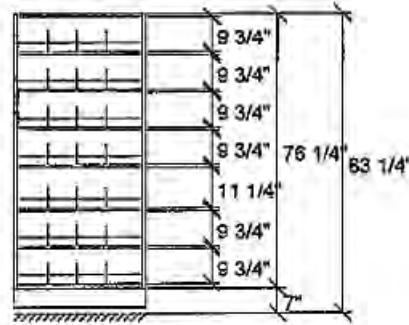
MobilStor 50,000

High-Density Mobile Storage

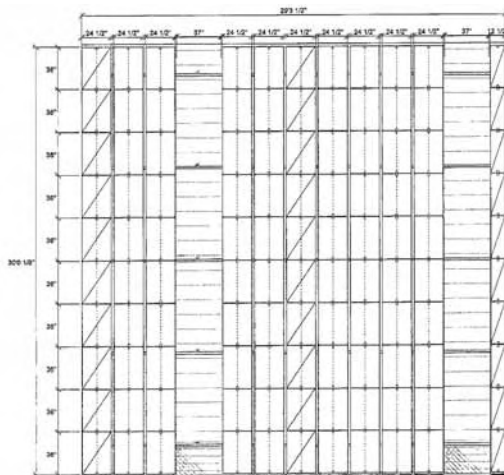
ITEMID	ITEMDESCRIPTION	Wt. (lbs)	SYSTEC/GSA PRICE
SYMobilStor50000POPS	Systec MobileStor 50000 - Mobile File system - powered operation with passive safety. 29'4"W x 30'D x 83"H - 7 shelf openings	30166	\$101,034.78



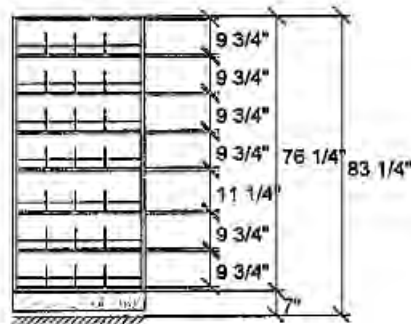
H83 1/4"
76 1/4"x26" d12"



ITEMID	ITEMDESCRIPTION	Wt. (lbs)	SYSTEC/GSA PRICE
SYMobilStor50000POZFS	Systec MobileStor 50000 - Mobile File system - powered operation with zero force safety. 29'4"W x 30'D x 83"H - 7 shelf openings	31091	\$122,942.60



H83 1/4"
76 1/4"x35" d12"



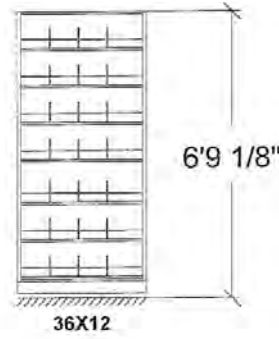
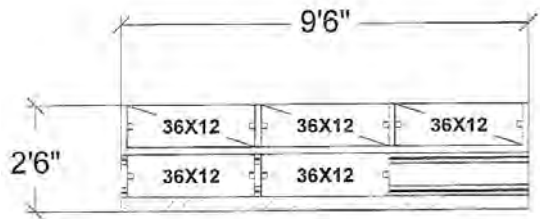


For smaller storage needs, maximize floor space using lateral shelving systems. Lateral shelving features shelving cabinets that slide in front of each other and come standard with two-deep or three-deep lateral shelving. Lateral shelving is readily expandable.

For a complete price list of all products & accessories, log on to www.systemcgroup.com and click GSA or go to www.gsaadvantage.gov.

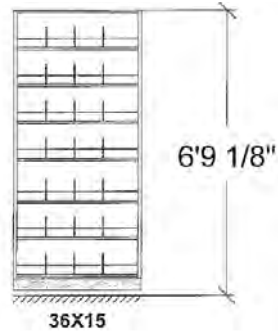
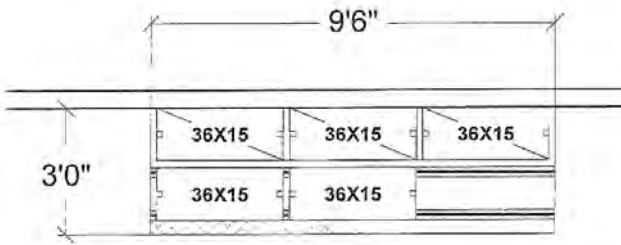
Lateral Systems

ITEMID	ITEMDESCRIPTION	Wt. (lbs)	SYSTEC/GSA PRICE
SYLATLET1	Systemc 3/2 Bi-File Lateral system - Lettersize: 114"W x 30"D x 82"H - 7 shelf openings	932	\$3,383.20



Elevation
76 1/4" uprights
7 openings
6 @ 9 3/4" clear
1 @ 11 1/4" clear
3 dividers per opening

ITEMID	ITEMDESCRIPTION	Wt. (lbs)	SYSTEC/GSA PRICE
SYLATLEG1	Systemc 3/2 Bi-File Lateral system - Legalsize: 114"W x 36"D x 82"H - 7 shelf openings	1036	\$3,425.57



Elevation
76 1/4" uprights
7 openings
6 @ 9 3/4" clear
1 @ 11 1/4" clear
3 dividers per opening

Linear Systems



Linear shelving systems feature pull out shelving that is ideal for both active-use areas and archival storage applications. Linear shelving design and mobile storage shelving sections are easily installed or relocated with no need for fixed rails.

For a complete price list of all products & accessories, log on to www.systemcgroup.com and click GSA or go to www.gsaadvantage.gov.

STORAGE
SYSTEMS

Lateral and Linear Systems



Rotary files cabinets and rotary file systems offer high capacity rotary file storage solutions that can be placed in virtually any office setting.

Our rotary file cabinets offer attractive doors that, when rotated, reveal the rotary files and records stored within. The space-saving design of our rotary file cabinets allows these storage systems to be placed within inches of a wall or work surface. Rotary file cabinets and rotary file systems can be easily relocated and expanded at any time.

For a complete price list of all products & accessories, log on to www.systemcgroup.com and click GSA or go to www.gsaadvantage.gov.

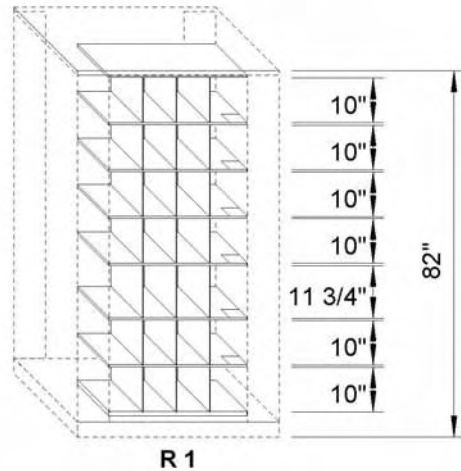
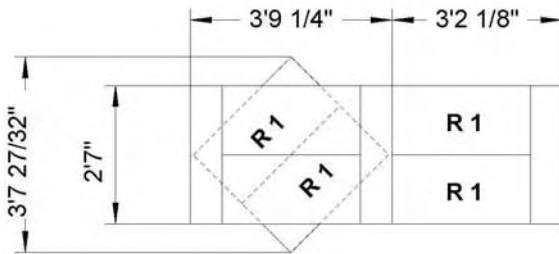
STORAGE SYSTEMS

Rotary File Cabinet

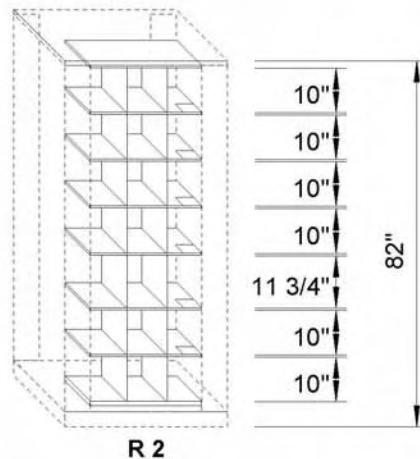
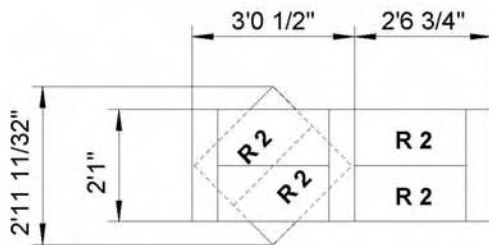
Rotary File Cabinet

ITEMID	ITEMDESCRIPTION	Wt. (lbs)	SYSTEC/GSA PRICE
SYPFS362582F	Systemc RotaryStor - Lettersize Starter unit: 36.5"W x 25"D x 82"H - 7 shelf openings	350	\$1,662.28
SYPFA302582F	Systemc RotaryStor - Lettersize Adder unit: 30.75"W x 25"D x 82"H - 7 shelf openings	285	\$1,509.94
SYPFS453182F	Systemc RotaryStor - Legalsize Starter unit: 45.25"W x 31"D x 82"H - 7 shelf openings	455	\$2,012.19
SYPFA383182F	Systemc RotaryStor - Legalsize Adder unit: 36.5"W x 25"D x 82"H - 7 shelf openings	370	\$1,860.64

7-Tier Unit, Legal Size



7-Tier Unit, Letter Size





4-Post shelving adds substantially more filing and storage capacity in the same or less floor space than file cabinets, and is much easier for personnel to use. Intelligently planned, ergonomically designed 4-Post shelving attractively organizes files and supplies for improved visibility, accessibility and organization. Designed for durability, efficient space utilization and lasting service, this shelving is built with the finest furniture grade steel. Modular door and drawer systems are also available.

For a complete price list of all products & accessories, log on to www.systecgroup.com and click GSA or go to www.gsaadvantage.gov.

4-Post Open Shelving Starter

ITEMID	ITEMNAME	ITEMDESCRIPTION	SYSTEC/GSA PRICE
SY9-361288-SOA	4 POST SHELVING - STARTER-OPEN - 36X12	STARTER-OPEN, 36X12, 107.5 lbs, Starter or Adder with slotted shelves, 88" high open or closed, 8 openings. Includes 9 shelves (8 slotted and 1 plain, 22 gauge), 18 shelf supports and centerstops or backstops (1 per opening), shelf reinforcements for all except top shelf. Starter includes 2 single uprights, Adder includes 1 tee upright. File dividers not included.	\$257.53
SY9-361588-SOA	4 POST SHELVING - STARTER-OPEN - 36X15	STARTER-OPEN, 36X15, 117.0 lbs, Starter or Adder with slotted shelves, 88" high open or closed, 8 openings. Includes 9 shelves (8 slotted and 1 plain, 22 gauge), 18 shelf supports and centerstops or backstops (1 per opening), shelf reinforcements for all except top shelf. Starter includes 2 single uprights, Adder includes 1 tee upright. File dividers not included.	\$279.29
SY9-362488-SOA	4 POST SHELVING - STARTER-OPEN - 36X24	STARTER-OPEN, 36X24, 1 shelf reinforcement, 155.8 lbs, Starter or Adder with slotted shelves, 88" high open or closed, 8 openings. Includes 9 shelves (8 slotted and 1 plain, 22 gauge), 18 shelf supports and centerstops or backstops (1 per opening), shelf reinforcements for all except top shelf. Starter includes 2 single uprights, Adder includes 1 tee upright. File dividers not included.	\$356.37
SY9-363088-SOA	4 POST SHELVING - STARTER-OPEN - 36X30	STARTER-OPEN, 36X30, 2 shelf reinforcements, 199.3 lbs, Starter or Adder with slotted shelves, 88" high open or closed, 8 openings. Includes 9 shelves (8 slotted and 1 plain, 22 gauge), 18 shelf supports and centerstops or backstops (1 per opening), shelf reinforcements for all except top shelf. Starter includes 2 single uprights, Adder includes 1 tee upright. File dividers not included.	\$433.45
SY9-421288-SOA	4 POST SHELVING - STARTER-OPEN - 42X12	STARTER-OPEN, 42X12, 143.3 lbs, Starter or Adder with slotted shelves, 88" high open or closed, 8 openings. Includes 9 shelves (8 slotted and 1 plain, 22 gauge), 18 shelf supports and centerstops or backstops (1 per opening), shelf reinforcements for all except top shelf. Starter includes 2 single uprights, Adder includes 1 tee upright. File dividers not included.	\$329.17
SY9-421588-SOA	4 POST SHELVING - STARTER-OPEN - 42X15	STARTER-OPEN, 42X15, 152.8 lbs, Starter or Adder with slotted shelves, 88" high open or closed, 8 openings. Includes 9 shelves (8 slotted and 1 plain, 22 gauge), 18 shelf supports and centerstops or backstops (1 per opening), shelf reinforcements for all except top shelf. Starter includes 2 single uprights, Adder includes 1 tee upright. File dividers not included.	\$355.47
SY9-422488-SOA	4 POST SHELVING - STARTER-OPEN - 42X24	STARTER-OPEN, 42X24, 2 shelf reinforcements, 220.3 lbs, Starter or Adder with slotted shelves, 88" high open or closed, 8 openings. Includes 9 shelves (8 slotted and 1 plain, 22 gauge), 18 shelf supports and centerstops or backstops (1 per opening), shelf reinforcements for all except top shelf. Starter includes 2 single uprights, Adder includes 1 tee upright. File dividers not included.	\$475.16
SY9-423088-SOA	4 POST SHELVING - STARTER-OPEN - 42X30	STARTER-OPEN, 42X30, 3 shelf reinforcements, 258.0 lbs, Starter or Adder with slotted shelves, 88" high open or closed, 8 openings. Includes 9 shelves (8 slotted and 1 plain, 22 gauge), 18 shelf supports and centerstops or backstops (1 per opening), shelf reinforcements for all except top shelf. Starter includes 2 single uprights, Adder includes 1 tee upright. File dividers not included.	\$567.66

SHELVING

4-Post



SHELVING

4-Post

4-Post Open Shelving Starter

ITEMID	ITEMNAME	ITEMDESCRIPTION	SYSTEC/GSA PRICE
SY9-481288-SOA	4 POST SHELVING - STARTER-OPEN - 48X12	STARTER-OPEN, 48X12, 181.0 lbs, Starter or Adder with slotted shelves, 88" high open or closed, 8 openings. Includes 9 shelves (8 slotted and 1 plain, 22 gauge), 18 shelf supports and centerstops or backstops (1 per opening), shelf reinforcements for all except top shelf. Starter includes 2 single uprights, Adder includes 1 tee upright. File dividers not included.	\$356.37
SY9-481588-SOA	4 POST SHELVING - STARTER-OPEN - 48X15	STARTER-OPEN, 48X15, 170.5 lbs, Starter or Adder with slotted shelves, 88" high open or closed, 8 openings. Includes 9 shelves (8 slotted and 1 plain, 22 gauge), 18 shelf supports and centerstops or backstops (1 per opening), shelf reinforcements for all except top shelf. Starter includes 2 single uprights, Adder includes 1 tee upright. File dividers not included.	\$384.48
SY9-482488-SOA	4 POST SHELVING - STARTER-OPEN - 48X24	STARTER-OPEN, 48X24, 2 shelf reinforcements, 244.5 lbs, Starter or Adder with slotted shelves, 88" high open or closed, 8 openings. Includes 9 shelves (8 slotted and 1 plain, 22 gauge), 18 shelf supports and centerstops or backstops (1 per opening), shelf reinforcements for all except top shelf. Starter includes 2 single uprights, Adder includes 1 tee upright. File dividers not included.	\$526.85
SY9-483088-SOA	4 POST SHELVING - STARTER-OPEN - 48X30	STARTER-OPEN, 48X30, 3 shelf reinforcements, 286.8 lbs, Starter or Adder with slotted shelves, 88" high open or closed, 8 openings. Includes 9 shelves (8 slotted and 1 plain, 22 gauge), 18 shelf supports and centerstops or backstops (1 per opening), shelf reinforcements for all except top shelf. Starter includes 2 single uprights, Adder includes 1 tee upright. File dividers not included.	\$624.79

4-Post Open Shelving Adder

ITEMID	ITEMNAME	ITEMDESCRIPTION	SYSTEC/GSA PRICE
SY9-361288-SOT	4 POST SHELVING - ADDER-OPEN - 36X12	ADDER-OPEN, 36X12, 100.5 lbs, Starter or Adder with slotted shelves, 88" high open or closed, 8 openings. Includes 9 shelves (8 slotted and 1 plain, 22 gauge), 18 shelf supports and centerstops or backstops (1 per opening), shelf reinforcements for all except top shelf. Starter includes 2 single uprights, Adder includes 1 tee upright. File dividers not included.	\$227.61
SY9-361588-SOT	4 POST SHELVING - ADDER-OPEN - 36X15	ADDER-OPEN, 36X15, 109.8 lbs, Starter or Adder with slotted shelves, 88" high open or closed, 8 openings. Includes 9 shelves (8 slotted and 1 plain, 22 gauge), 18 shelf supports and centerstops or backstops (1 per opening), shelf reinforcements for all except top shelf. Starter includes 2 single uprights, Adder includes 1 tee upright. File dividers not included.	\$249.37
SY9-362488-SOT	4 POST SHELVING - ADDER-OPEN - 36X24	ADDER-OPEN, 36X24, 157.8 lbs, Starter or Adder with slotted shelves, 88" high open or closed, 8 openings. Includes 9 shelves (8 slotted and 1 plain, 22 gauge), 18 shelf supports and centerstops or backstops (1 per opening), shelf reinforcements for all except top shelf. Starter includes 2 single uprights, Adder includes 1 tee upright. File dividers not included.	\$326.45
SY9-363088-SOT	4 POST SHELVING - ADDER-OPEN - 36X30	ADDER-OPEN, 36X30, 2 shelf reinforcements, 190.3 lbs, Starter or Adder with slotted shelves, 88" high open or closed, 8 openings. Includes 9 shelves (8 slotted and 1 plain, 22 gauge), 18 shelf supports and centerstops or backstops (1 per opening), shelf reinforcements for all except top shelf. Starter includes 2 single uprights, Adder includes 1 tee upright. File dividers not included.	\$397.18
SY9-421288-SOT	4 POST SHELVING - ADDER-OPEN - 42X12	ADDER-OPEN, 42X12, 136.3 lbs, Starter or Adder with slotted shelves, 88" high open or closed, 8 openings. Includes 9 shelves (8 slotted and 1 plain, 22 gauge), 18 shelf supports and centerstops or backstops (1 per opening), shelf reinforcements for all except top shelf. Starter includes 2 single uprights, Adder includes 1 tee upright. File dividers not included.	\$290.18
SY9-421588-SOT	4 POST SHELVING - ADDER-OPEN - 42X15	ADDER-OPEN, 42X15, 145.5 lbs, Starter or Adder with slotted shelves, 88" high open or closed, 8 openings. Includes 9 shelves (8 slotted and 1 plain, 22 gauge), 18 shelf supports and centerstops or backstops (1 per opening), shelf reinforcements for all except top shelf. Starter includes 2 single uprights, Adder includes 1 tee upright. File dividers not included.	\$315.57

4-Post Open Shelving Adder

ITEMID	ITEMNAME	ITEMDESCRIPTION	SYSTEC/GSA PRICE
SY9-422488-SOT	4 POST SHELVING - ADDER-OPEN - 42X24	ADDER-OPEN, 42X24, 2 shelf reinforcements, 212.3 lbs. Starter or Adder with slotted shelves, 88" high open or closed, 8 openings. Includes 9 shelves (8 slotted and 1 plain, 22 gauge), 18 shelf supports and centerstops or backstops (1 per opening), shelf reinforcements for all except top shelf. Starter includes 2 single uprights, Adder includes 1 tee upright. File dividers not included.	\$445.24
SY9-423088-SOT	4 POST SHELVING - ADDER-OPEN - 42X30	ADDER-OPEN, 42X30, 3 shelf reinforcements, 249.0 lbs. Starter or Adder with slotted shelves, 88" high open or closed, 8 openings. Includes 9 shelves (8 slotted and 1 plain, 22 gauge), 18 shelf supports and centerstops or backstops (1 per opening), shelf reinforcements for all except top shelf. Starter includes 2 single uprights, Adder includes 1 tee upright. File dividers not included.	\$531.39
SY9-481288-SOT	4 POST SHELVING - ADDER-OPEN - 48X12	ADDER-OPEN, 48X12, 154.0 lbs. Starter or Adder with slotted shelves, 88" high open or closed, 8 openings. Includes 9 shelves (8 slotted and 1 plain, 22 gauge), 18 shelf supports and centerstops or backstops (1 per opening), shelf reinforcements for all except top shelf. Starter includes 2 single uprights, Adder includes 1 tee upright. File dividers not included.	\$326.45
SY9-481588-SOT	4 POST SHELVING - ADDER-OPEN - 48X15	ADDER-OPEN, 48X15, 163.0 lbs. Starter or Adder with slotted shelves, 88" high open or closed, 8 openings. Includes 9 shelves (8 slotted and 1 plain, 22 gauge), 18 shelf supports and centerstops or backstops (1 per opening), shelf reinforcements for all except top shelf. Starter includes 2 single uprights, Adder includes 1 tee upright. File dividers not included.	\$354.56
SY9-482488-SOT	4 POST SHELVING - ADDER-OPEN - 48X24	ADDER-OPEN, 48X24, 2 shelf reinforcements, 236.6 lbs. Starter or Adder with slotted shelves, 88" high open or closed, 8 openings. Includes 9 shelves (8 slotted and 1 plain, 22 gauge), 18 shelf supports and centerstops or backstops (1 per opening), shelf reinforcements for all except top shelf. Starter includes 2 single uprights, Adder includes 1 tee upright. File dividers not included.	\$497.83
SY9-483088-SOT	4 POST SHELVING - ADDER-OPEN - 48X30	ADDER-OPEN, 48X30, 3 shelf reinforcements, 277.6 lbs. Starter or Adder with slotted shelves, 88" high open or closed, 8 openings. Includes 9 shelves (8 slotted and 1 plain, 22 gauge), 18 shelf supports and centerstops or backstops (1 per opening), shelf reinforcements for all except top shelf. Starter includes 2 single uprights, Adder includes 1 tee upright. File dividers not included.	\$587.61

4-Post Closed Shelving Starter

ITEMID	ITEMNAME	ITEMDESCRIPTION	SYSTEC/GSA PRICE
SY9-361288-SCA	4 POST SHELVING - STARTER-CLOSED - 36X12	STARTER-CLOSED, 36X12, 122.0 lbs. Starter or Adder with slotted shelves, 88" high open or closed, 8 openings. Includes 9 shelves (8 slotted and 1 plain, 22 gauge), 18 shelf supports and centerstops or backstops (1 per opening), shelf reinforcements for all except top shelf. Starter includes 2 single uprights, Adder includes 1 tee upright. File dividers not included.	\$276.57
SY9-361588-SCA	4 POST SHELVING - STARTER-CLOSED - 36X15	STARTER-CLOSED, 36X15, 135.0 lbs. Starter or Adder with slotted shelves, 88" high open or closed, 8 openings. Includes 9 shelves (8 slotted and 1 plain, 22 gauge), 18 shelf supports and centerstops or backstops (1 per opening), shelf reinforcements for all except top shelf. Starter includes 2 single uprights, Adder includes 1 tee upright. File dividers not included.	\$302.87
SY9-382488-SCA	4 POST SHELVING - STARTER-CLOSED - 36X24	STARTER-CLOSED, 36X24, 1 shelf reinforcement, 194.3 lbs. Starter or Adder with slotted shelves, 88" high open or closed, 8 openings. Includes 9 shelves (8 slotted and 1 plain, 22 gauge), 18 shelf supports and centerstops or backstops (1 per opening), shelf reinforcements for all except top shelf. Starter includes 2 single uprights, Adder includes 1 tee upright. File dividers not included.	\$394.46
SY9-363088-SCA	4 POST SHELVING - STARTER-CLOSED - 36X30	STARTER-CLOSED, 36X30, 2 shelf reinforcements, 234.3 lbs. Starter or Adder with slotted shelves, 88" high open or closed, 8 openings. Includes 9 shelves (8 slotted and 1 plain, 22 gauge), 18 shelf supports and centerstops or backstops (1 per opening), shelf reinforcements for all except top shelf. Starter includes 2 single uprights, Adder includes 1 tee upright. File dividers not included.	\$474.26

SHELVING

4-Post



4-Post Closed Shelving Starter

ITEMID	ITEMNAME	ITEMDESCRIPTION	SYSTEC/GSA PRICE
SY9-421288-SCA	4 POST SHELVING - STARTER-CLOSED - 42X12	STARTER-CLOSED, 42X12, 157.8 lbs, Starter or Adder with slotted shelves, 88" high open or closed, 8 openings. Includes 9 shelves (8 slotted and 1 plain, 22 gauge), 18 shelf supports and centerstops or backstops (1 per opening), shelf reinforcements for all except top shelf. Starter includes 2 single uprights, Adder includes 1 tee upright. File dividers not included.	\$339.14
SY9-421588-SCA	4 POST SHELVING - STARTER-CLOSED - 42X15	STARTER-CLOSED, 42X15, 170.5 lbs, Starter or Adder with slotted shelves, 88" high open or closed, 8 openings. Includes 9 shelves (8 slotted and 1 plain, 22 gauge), 18 shelf supports and centerstops or backstops (1 per opening), shelf reinforcements for all except top shelf. Starter includes 2 single uprights, Adder includes 1 tee upright. File dividers not included.	\$369.07
SY9-422488-SCA	4 POST SHELVING - STARTER-CLOSED - 42X24	STARTER-CLOSED, 42X24, 2 shelf reinforcements, 246.8 lbs, Starter or Adder with slotted shelves, 88" high open or closed, 8 openings. Includes 9 shelves (8 slotted and 1 plain, 22 gauge), 18 shelf supports and centerstops or backstops (1 per opening), shelf reinforcements for all except top shelf. Starter includes 2 single uprights, Adder includes 1 tee upright. File dividers not included.	\$533.20
SY9-423088-SCA	4 POST SHELVING - STARTER-CLOSED - 42X30	STARTER-CLOSED, 42X30, 3 shelf reinforcements, 298.0 lbs, Starter or Adder with slotted shelves, 88" high open or closed, 8 openings. Includes 9 shelves (8 slotted and 1 plain, 22 gauge), 18 shelf supports and centerstops or backstops (1 per opening), shelf reinforcements for all except top shelf. Starter includes 2 single uprights, Adder includes 1 tee upright. File dividers not included.	\$608.31
SY9-481288-SCA	4 POST SHELVING - STARTER-CLOSED - 48X12	STARTER-CLOSED, 48X12, 176.5 lbs, Starter or Adder with slotted shelves, 88" high open or closed, 8 openings. Includes 9 shelves (8 slotted and 1 plain, 22 gauge), 18 shelf supports and centerstops or backstops (1 per opening), shelf reinforcements for all except top shelf. Starter includes 2 single uprights, Adder includes 1 tee upright. File dividers not included.	\$375.42
SY9-481588-SCA	4 POST SHELVING - STARTER-CLOSED - 48X15	STARTER-CLOSED, 48X15, 188.5 lbs, Starter or Adder with slotted shelves, 88" high open or closed, 8 openings. Includes 9 shelves (8 slotted and 1 plain, 22 gauge), 18 shelf supports and centerstops or backstops (1 per opening), shelf reinforcements for all except top shelf. Starter includes 2 single uprights, Adder includes 1 tee upright. File dividers not included.	\$408.06
SY9-482488-SCA	4 POST SHELVING - STARTER-CLOSED - 48X24	STARTER-CLOSED, 48X24, 2 shelf reinforcements, 273.0 lbs, Starter or Adder with slotted shelves, 88" high open or closed, 8 openings. Includes 9 shelves (8 slotted and 1 plain, 22 gauge), 18 shelf supports and centerstops or backstops (1 per opening), shelf reinforcements for all except top shelf. Starter includes 2 single uprights, Adder includes 1 tee upright. File dividers not included.	\$570.38
SY9-483088-SCA	4 POST SHELVING - STARTER-CLOSED - 48X30	STARTER-CLOSED, 48X30, 3 shelf reinforcements, 321.8 lbs, Starter or Adder with slotted shelves, 88" high open or closed, 8 openings. Includes 9 shelves (8 slotted and 1 plain, 22 gauge), 18 shelf supports and centerstops or backstops (1 per opening), shelf reinforcements for all except top shelf. Starter includes 2 single uprights, Adder includes 1 tee upright. File dividers not included.	\$665.59

4-Post Closed Shelving Adder

ITEMID	ITEMNAME	ITEMDESCRIPTION	SYSTEC/GSA PRICE
SY9-361288-SCT	4 POST SHELVING - ADDER-CLOSED - 36X12	ADDER-CLOSED, 36X12, 108.0 lbs, Starter or Adder with slotted shelves, 88" high open or closed, 8 openings. Includes 9 shelves (8 slotted and 1 plain, 22 gauge), 18 shelf supports and centerstops or backstops (1 per opening), shelf reinforcements for all except top shelf. Starter includes 2 single uprights, Adder includes 1 tee upright. File dividers not included.	\$239.40
SY9-361588-SCT	4 POST SHELVING - ADDER-CLOSED - 36X15	ADDER-CLOSED, 36X15, 119.0 lbs, Starter or Adder with slotted shelves, 88" high open or closed, 8 openings. Includes 9 shelves (8 slotted and 1 plain, 22 gauge), 18 shelf supports and centerstops or backstops (1 per opening), shelf reinforcements for all except top shelf. Starter includes 2 single uprights, Adder includes 1 tee upright. File dividers not included.	\$262.07
SY9-362488-SCT	4 POST SHELVING - ADDER-CLOSED - 36X24	ADDER-CLOSED, 36X24, 171.8 lbs, Starter or Adder with slotted shelves, 88" high open or closed, 8 openings. Includes 9 shelves (8 slotted and 1 plain, 22 gauge), 18 shelf supports and centerstops or backstops (1 per opening), shelf reinforcements for all except top shelf. Starter includes 2 single uprights, Adder includes 1 tee upright. File dividers not included.	\$352.75

4-Post Closed Shelving Adder

ITEMID	ITEMNAME	ITEMDESCRIPTION	SYSTEC/GSA PRICE
SY9-363088-SCT	4 POST SHELVING - ADDER-CLOSED - 36X30	ADDER-CLOSED, 36X30, 2 shelf reinforcements, 208.0 lbs, Starter or Adder with slotted shelves, 88" high open or closed, 8 openings. Includes 9 shelves (8 slotted and 1 plain, 22 gauge), 18 shelf supports and centerstops or backstops (1 per opening), shelf reinforcements for all except top shelf. Starter includes 2 single uprights, Adder includes 1 tee upright. File dividers not included.	\$438.89
SY9-421288-SCT	4 POST SHELVING - ADDER-CLOSED - 42X12	ADDER-CLOSED, 42X12, 154.0 lbs, Starter or Adder with slotted shelves, 88" high open or closed, 8 openings. Includes 9 shelves (8 slotted and 1 plain, 22 gauge), 18 shelf supports and centerstops or backstops (1 per opening), shelf reinforcements for all except top shelf. Starter includes 2 single uprights, Adder includes 1 tee upright. File dividers not included.	\$301.06
SY9-421588-SCT	4 POST SHELVING - ADDER-CLOSED - 42X15	ADDER-CLOSED, 42X15, 154.8 lbs, Starter or Adder with slotted shelves, 88" high open or closed, 8 openings. Includes 9 shelves (8 slotted and 1 plain, 22 gauge), 18 shelf supports and centerstops or backstops (1 per opening), shelf reinforcements for all except top shelf. Starter includes 2 single uprights, Adder includes 1 tee upright. File dividers not included.	\$329.17
SY9-422488-SCT	4 POST SHELVING - ADDER-CLOSED - 42X24	ADDER-CLOSED, 42X24, 2 shelf reinforcements, 228.3 lbs, Starter or Adder with slotted shelves, 88" high open or closed, 8 openings. Includes 9 shelves (8 slotted and 1 plain, 22 gauge), 18 shelf supports and centerstops or backstops (1 per opening), shelf reinforcements for all except top shelf. Starter includes 2 single uprights, Adder includes 1 tee upright. File dividers not included.	\$465.19
SY9-423088-SCT	4 POST SHELVING - ADDER-CLOSED - 42X30	ADDER-CLOSED, 42X30, 3 shelf reinforcements, 266.8 lbs, Starter or Adder with slotted shelves, 88" high open or closed, 8 openings. Includes 9 shelves (8 slotted and 1 plain, 22 gauge), 18 shelf supports and centerstops or backstops (1 per opening), shelf reinforcements for all except top shelf. Starter includes 2 single uprights, Adder includes 1 tee upright. File dividers not included.	\$554.96
SY9-481288-SCT	4 POST SHELVING - ADDER-CLOSED - 48X12	ADDER-CLOSED, 48X12, 151.5 lbs, Starter or Adder with slotted shelves, 88" high open or closed, 8 openings. Includes 9 shelves (8 slotted and 1 plain, 22 gauge), 18 shelf supports and centerstops or backstops (1 per opening), shelf reinforcements for all except top shelf. Starter includes 2 single uprights, Adder includes 1 tee upright. File dividers not included.	\$337.33
SY9-481588-SCT	4 POST SHELVING - ADDER-CLOSED - 48X15	ADDER-CLOSED, 48X15, 172.5 lbs, Starter or Adder with slotted shelves, 88" high open or closed, 8 openings. Includes 9 shelves (8 slotted and 1 plain, 22 gauge), 18 shelf supports and centerstops or backstops (1 per opening), shelf reinforcements for all except top shelf. Starter includes 2 single uprights, Adder includes 1 tee upright. File dividers not included.	\$367.25
SY9-482488-SCT	4 POST SHELVING - ADDER-CLOSED - 48X24	ADDER-CLOSED, 48X24, 2 shelf reinforcements, 250.5 lbs, Starter or Adder with slotted shelves, 88" high open or closed, 8 openings. Includes 9 shelves (8 slotted and 1 plain, 22 gauge), 18 shelf supports and centerstops or backstops (1 per opening), shelf reinforcements for all except top shelf. Starter includes 2 single uprights, Adder includes 1 tee upright. File dividers not included.	\$517.78
SY9-483088-SCT	4 POST SHELVING - ADDER-CLOSED - 48X30	ADDER-CLOSED, 48X30, 3 shelf reinforcements, 295.5 lbs, Starter or Adder with slotted shelves, 88" high open or closed, 8 openings. Includes 9 shelves (8 slotted and 1 plain, 22 gauge), 18 shelf supports and centerstops or backstops (1 per opening), shelf reinforcements for all except top shelf. Starter includes 2 single uprights, Adder includes 1 tee upright. File dividers not included.	\$611.18

Stationary Shelving

ITEMID	ITEMNAME	Wt. (lbs)	SYSTEC/GSA PRICE
SYUSCA9361285SM	Systec ShelfStor - Stationary Shelving Unit: 36"W x 12"D x 85.25"H - 8 shelf openings	120.5	\$243.59
SYUSCA9361585SM	Systec ShelfStor - Stationary Shelving Unit: 36"W x 15"D x 85.25"H - 8 shelf openings	133.5	\$265.01
SYUSCA9362485SM	Systec ShelfStor - Stationary Shelving Unit: 36"W x 24"D x 85.25"H - 8 shelf openings	190.3	\$347.53
SYUSCA9363085SM	Systec ShelfStor - Stationary Shelving Unit: 36"W x 30"D x 85.25"H - 8 shelf openings	230.8	\$418.15

SHELVING

4-Post / Stationary



Four post shelving offers the strength and rigidity needed for heavy film weight loads. Designed for durability, efficient space utilization and lasting service. Available with 22-gauge standard or 18-gauge heavy duty shelves. Boltless, wedge-lock style is designed to assemble without fasteners or clips. Strength is unmatched with no cross-bracing required.

SHELVING

4-Post X-Ray

4-Post X-Ray Shelving Starters

ITEMID	ITEMNAME	ITEMDESCRIPTION	SYSTEC/GSA PRICE
SY6-361885-XCA	4-POST X-RAY SHELVING - STARTER - 36X18	STARTER, 36X18, 130.8 lbs. 85" high closed units, 5 openings. Includes 6 shelves (5 slotted and 1 plain, 18 gauge), 12 shelf supports and centerstops or backstops (1 per opening), shelf reinforcements for all except top shelf. Starter includes angle uprights, Adder includes 1 tee upright. File dividers not included.	\$359.09
SY6-363685-XCA	4-POST X-RAY SHELVING - STARTER - 36X36	STARTER, 36X36, 3 shelf reinforcements, 248.5 lbs. 85" high closed units, 5 openings. Includes 6 shelves (5 slotted and 1 plain, 18 gauge), 12 shelf supports and centerstops or backstops (1 per opening), shelf reinforcements for all except top shelf. Starter includes angle uprights, Adder includes 1 tee upright. File dividers not included.	\$543.17
SY6-421885-XCA	4-POST X-RAY SHELVING - STARTER - 42X18	STARTER, 42X18, 147.0 lbs. 85" high closed units, 5 openings. Includes 6 shelves (5 slotted and 1 plain, 18 gauge), 12 shelf supports and centerstops or backstops (1 per opening), shelf reinforcements for all except top shelf. Starter includes angle uprights, Adder includes 1 tee upright. File dividers not included.	\$330.98
SY6-481885-XCA	4-POST X-RAY SHELVING - STARTER - 48X18	STARTER, 48X18, 160.9 lbs. 85" high closed units, 5 openings. Includes 6 shelves (5 slotted and 1 plain, 18 gauge), 12 shelf supports and centerstops or backstops (1 per opening), shelf reinforcements for all except top shelf. Starter includes angle uprights, Adder includes 1 tee upright. File dividers not included.	\$363.63

4-Post X-Ray Shelving Adders

ITEMID	ITEMNAME	ITEMDESCRIPTION	SYSTEC/GSA PRICE
SY6-361885-XCT	4-POST X-RAY SHELVING - ADDER - 36X18	ADDER, 36X18, 119.3 lbs. 85" high closed units, 5 openings. Includes 6 shelves (5 slotted and 1 plain, 18 gauge), 12 shelf supports and centerstops or backstops (1 per opening), shelf reinforcements for all except top shelf. Starter includes angle uprights, Adder includes 1 tee upright. File dividers not included.	\$263.88
SY6-363685-XCT	4-POST X-RAY SHELVING - ADDER - 36X36	ADDER, 36X36, 3 shelf reinforcements, 219.0 lbs. 85" high closed units, 5 openings. Includes 6 shelves (5 slotted and 1 plain, 18 gauge), 12 shelf supports and centerstops or backstops (1 per opening), shelf reinforcements for all except top shelf. Starter includes angle uprights, Adder includes 1 tee upright. File dividers not included.	\$473.35
SY6-421885-XCT	4-POST X-RAY SHELVING - ADDER - 42X18	ADDER, 42X18, 128.5 lbs. 85" high closed units, 5 openings. Includes 6 shelves (5 slotted and 1 plain, 18 gauge), 12 shelf supports and centerstops or backstops (1 per opening), shelf reinforcements for all except top shelf. Starter includes angle uprights, Adder includes 1 tee upright. File dividers not included.	\$290.18
SY6-481885-XCT	4-POST X-RAY SHELVING - ADDER - 48X18	ADDER, 48X18, 142.8 lbs. 85" high closed units, 5 openings. Includes 6 shelves (5 slotted and 1 plain, 18 gauge), 12 shelf supports and centerstops or backstops (1 per opening), shelf reinforcements for all except top shelf. Starter includes angle uprights, Adder includes 1 tee upright. File dividers not included.	\$322.82



Case-type shelving is ideal for upscale offices and libraries. Available in custom wood end panels and a variety of shelving colors to meet interior design needs.

Case-Type Shelving Starters

ITEMID	ITEMNAME	ITEMDESCRIPTION	SYSTEC/GSA PRICE
SY9-361288-CCA	CASE-TYPE SHELVING - STARTER - 36X12	STARTER, 36X12, 138.5 lbs. 88" high, 8 openings. Includes 9 plain shelves, 22 gauge, 18 shelf supports and slicer centerstops or slider backstops (1 per opening), shelf reinforcements for all except top shelf. Starter includes 2 angle uprights, Adder includes 1 tee upright. File dividers not included.	\$343.68
SY9-361588-CCA	CASE-TYPE SHELVING - STARTER - 36X15	STARTER, 36X15, 165.0 lbs. 88" high, 8 openings. Includes 9 plain shelves, 22 gauge, 18 shelf supports and slicer centerstops or slider backstops (1 per opening), shelf reinforcements for all except top shelf. Starter includes 2 angle uprights, Adder includes 1 tee upright. File dividers not included.	\$379.95
SY9-362488-CCA	CASE-TYPE SHELVING - STARTER - 36X24	STARTER, 36X24, 1 shelf reinforcement, 218.8 lbs. 88" high, 8 openings. Includes 9 plain shelves, 22 gauge, 18 shelf supports and slicer centerstops or slider backstops (1 per opening), shelf reinforcements for all except top shelf. Starter includes 2 angle uprights, Adder includes 1 tee upright. File dividers not included.	\$507.81
SY9-363088-CCA	CASE-TYPE SHELVING - STARTER - 36X30	STARTER, 36X30, 2 shelf reinforcements, 269.5 lbs. 88" high, 8 openings. Includes 9 plain shelves, 22 gauge, 18 shelf supports and slicer centerstops or slider backstops (1 per opening), shelf reinforcements for all except top shelf. Starter includes 2 angle uprights, Adder includes 1 tee upright. File dividers not included.	\$603.02
SY9-421288-CCA	CASE-TYPE SHELVING - STARTER - 42X12	STARTER, 42X12, 151.3 lbs. 88" high, 8 openings. Includes 9 plain shelves, 22 gauge, 18 shelf supports and slicer centerstops or slider backstops (1 per opening), shelf reinforcements for all except top shelf. Starter includes 2 angle uprights, Adder includes 1 tee upright. File dividers not included.	\$408.06
SY9-421588-CCA	CASE-TYPE SHELVING - STARTER - 42X15	STARTER, 42X15, 170.0 lbs. 88" high, 8 openings. Includes 9 plain shelves, 22 gauge, 18 shelf supports and slicer centerstops or slider backstops (1 per opening), shelf reinforcements for all except top shelf. Starter includes 2 angle uprights, Adder includes 1 tee upright. File dividers not included.	\$447.96
SY9-422488-CCA	CASE-TYPE SHELVING - STARTER - 42X24	STARTER, 42X24, 2 shelf reinforcements, 240.0 lbs. 88" high, 8 openings. Includes 9 plain shelves, 22 gauge, 18 shelf supports and slicer centerstops or slider backstops (1 per opening), shelf reinforcements for all except top shelf. Starter includes 2 angle uprights, Adder includes 1 tee upright. File dividers not included.	\$616.62
SY9-423088-CCA	CASE-TYPE SHELVING - STARTER - 42X30	STARTER, 42X30, 3 shelf reinforcements, 305.0 lbs. 88" high, 8 openings. Includes 9 plain shelves, 22 gauge, 18 shelf supports and slicer centerstops or slider backstops (1 per opening), shelf reinforcements for all except top shelf. Starter includes 2 angle uprights, Adder includes 1 tee upright. File dividers not included.	\$716.37
SY9-481288-CCA	CASE-TYPE SHELVING - STARTER - 48X12	STARTER, 48X12, 188.3 lbs. 88" high, 8 openings. Includes 9 plain shelves, 22 gauge, 18 shelf supports and slicer centerstops or slider backstops (1 per opening), shelf reinforcements for all except top shelf. Starter includes 2 angle uprights, Adder includes 1 tee upright. File dividers not included.	\$447.05
SY9-481588-CCA	CASE-TYPE SHELVING - STARTER - 48X15	STARTER, 48X15, 169.3 lbs. 88" high, 8 openings. Includes 9 plain shelves, 22 gauge, 18 shelf supports and slicer centerstops or slider backstops (1 per opening), shelf reinforcements for all except top shelf. Starter includes 2 angle uprights, Adder includes 1 tee upright. File dividers not included.	\$505.09
SY9-482488-CCA	CASE-TYPE SHELVING - STARTER - 48X24	STARTER, 48X24, 2 shelf reinforcements, 274.8 lbs. 88" high, 8 openings. Includes 9 plain shelves, 22 gauge, 18 shelf supports and slicer centerstops or slider backstops (1 per opening), shelf reinforcements for all except top shelf. Starter includes 2 angle uprights, Adder includes 1 tee upright. File dividers not included.	\$662.87
SY9-483088-CCA	CASE-TYPE SHELVING - STARTER - 48X30	STARTER, 48X30, 3 shelf reinforcements, 355.5 lbs. 88" high, 8 openings. Includes 9 plain shelves, 22 gauge, 18 shelf supports and slicer centerstops or slider backstops (1 per opening), shelf reinforcements for all except top shelf. Starter includes 2 angle uprights, Adder includes 1 tee upright. File dividers not included.	\$780.60

SHELVING

Case-Type



SHELVING

Case-Type

Case-Type Shelving Adders

ITEMID	ITEMNAME	ITEMDESCRIPTION	SYSTEC/GSA PRICE
SY9-361288-CCT	CASE-TYPE SHELVING - ADDER - 36X12	ADDER, 36X12, 118.3 lbs. 88" high, 8 openings. Includes 9 plain shelves, 22 gauge, 18 shelf supports and slicer centerstops or slider backstops (1 per opening), shelf reinforcements for all except top shelf. Starter includes 2 angle uprights, Adder includes 1 tee upright. File dividers not included.	\$283.83
SY9-361588-CCT	CASE-TYPE SHELVING - ADDER - 36X15	ADDER, 36X15, 155.0 lbs. 88" high, 8 openings. Includes 9 plain shelves, 22 gauge, 18 shelf supports and slicer centerstops or slider backstops (1 per opening), shelf reinforcements for all except top shelf. Starter includes 2 angle uprights, Adder includes 1 tee upright. File dividers not included.	\$314.66
SY9-382488-CCT	CASE-TYPE SHELVING - ADDER - 36X24	ADDER, 36X24, 1 shelf reinforcement, 183.3 lbs. 88" high, 8 openings. Includes 9 plain shelves, 22 gauge, 18 shelf supports and slicer centerstops or slider backstops (1 per opening), shelf reinforcements for all except top shelf. Starter includes 2 angle uprights, Adder includes 1 tee upright. File dividers not included.	\$412.59
SY9-363088-CCT	CASE-TYPE SHELVING - ADDER - 36X30	ADDER, 36X30, 2 shelf reinforcements, 225.0 lbs. 88" high, 8 openings. Includes 9 plain shelves, 22 gauge, 18 shelf supports and slicer centerstops or slider backstops (1 per opening), shelf reinforcements for all except top shelf. Starter includes 2 angle uprights, Adder includes 1 tee upright. File dividers not included.	\$505.99
SY9-421288-CCT	CASE-TYPE SHELVING - ADDER - 42X12	ADDER, 42X12, 131.0 lbs. 88" high, 8 openings. Includes 9 plain shelves, 22 gauge, 18 shelf supports and slicer centerstops or slider backstops (1 per opening), shelf reinforcements for all except top shelf. Starter includes 2 angle uprights, Adder includes 1 tee upright. File dividers not included.	\$349.12
SY9-421588-CCT	CASE-TYPE SHELVING - ADDER - 42X15	ADDER, 42X15, 146.0 lbs. 88" high, 8 openings. Includes 9 plain shelves, 22 gauge, 18 shelf supports and slicer centerstops or slider backstops (1 per opening), shelf reinforcements for all except top shelf. Starter includes 2 angle uprights, Adder includes 1 tee upright. File dividers not included.	\$382.67
SY9-422488-CCT	CASE-TYPE SHELVING - ADDER - 42X24	ADDER, 42X24, 2 shelf reinforcements, 214.0 lbs. 88" high, 8 openings. Includes 9 plain shelves, 22 gauge, 18 shelf supports and slicer centerstops or slider backstops (1 per opening), shelf reinforcements for all except top shelf. Starter includes 2 angle uprights, Adder includes 1 tee upright. File dividers not included.	\$525.04
SY9-423088-CCT	CASE-TYPE SHELVING - ADDER - 42X30	ADDER, 42X30, 3 shelf reinforcements, 262.5 lbs. 88" high, 8 openings. Includes 9 plain shelves, 22 gauge, 18 shelf supports and slicer centerstops or slider backstops (1 per opening), shelf reinforcements for all except top shelf. Starter includes 2 angle uprights, Adder includes 1 tee upright. File dividers not included.	\$633.25
SY9-481288-CCT	CASE-TYPE SHELVING - ADDER - 48X12	ADDER, 48X12, 148.0 lbs. 88" high, 8 openings. Includes 9 plain shelves, 22 gauge, 18 shelf supports and slicer centerstops or slider backstops (1 per opening), shelf reinforcements for all except top shelf. Starter includes 2 angle uprights, Adder includes 1 tee upright. File dividers not included.	\$386.30
SY9-481588-CCT	CASE-TYPE SHELVING - ADDER - 48X15	ADDER, 48X15, 155.3 lbs. 88" high, 8 openings. Includes 9 plain shelves, 22 gauge, 18 shelf supports and slicer centerstops or slider backstops (1 per opening), shelf reinforcements for all except top shelf. Starter includes 2 angle uprights, Adder includes 1 tee upright. File dividers not included.	\$412.59
SY9-482488-CCT	CASE-TYPE SHELVING - ADDER - 48X24	ADDER, 48X24, 2 shelf reinforcements, 239.3 lbs. 88" high, 8 openings. Includes 9 plain shelves, 22 gauge, 18 shelf supports and slicer centerstops or slider backstops (1 per opening), shelf reinforcements for all except top shelf. Starter includes 2 angle uprights, Adder includes 1 tee upright. File dividers not included.	\$583.07
SY9-483088-CCT	CASE-TYPE SHELVING - ADDER - 48X30	ADDER, 48X30, 3 shelf reinforcements, 292.0 lbs. 88" high, 8 openings. Includes 9 plain shelves, 22 gauge, 18 shelf supports and slicer centerstops or slider backstops (1 per opening), shelf reinforcements for all except top shelf. Starter includes 2 angle uprights, Adder includes 1 tee upright. File dividers not included.	\$683.73



The longevity of individual files is improved by the type of support mechanics built into the storage system.

Lateral files are best stored on their spine; this method ensures maximum use of the available space, eliminates the added cost of suspension pockets and delivers a user-friendly system. Metal file dividers hook into slots on shelves and provide a flexible way to organize your paperwork.

File Dividers

ITEMID	ITEMNAME	ITEMDESCRIPTION	SYSTEC/GSA PRICE
SY-0506-FD	FILE DIVIDERS - 5X6	FILE DIVIDERS, 5X6, .5 lbs	\$1.59
SY-0606-FD	FILE DIVIDERS - 6X6	FILE DIVIDERS, 6X6, .8 lbs	\$1.59
SY-0706-FD	FILE DIVIDERS - 7X6	FILE DIVIDERS, 7X6, .8 lbs	\$1.59
SY-0806-FD	FILE DIVIDERS - 8X6	FILE DIVIDERS, 8X6, .8 lbs	\$1.59
SY-1006-FD	FILE DIVIDERS - 10X6	FILE DIVIDERS, 10X6, 1.0 lbs	\$1.95
SY-1106-FD	FILE DIVIDERS - 11X6	FILE DIVIDERS, 11X6, 1.0 lbs	\$2.31
SY-1306-FD	FILE DIVIDERS - 13X6	FILE DIVIDERS, 13X6, 1.5 lbs	\$2.31
SY-1406-FD	FILE DIVIDERS - 14X6	FILE DIVIDERS, 14X6, 1.5 lbs	\$2.45
SY-1806-FD	FILE DIVIDERS - 18X6	FILE DIVIDERS, 18X6, 2.0 lbs	\$3.17
SY-1610-FD	FILE DIVIDERS - 16X10	FILE DIVIDERS, 16X10, 2.8 lbs	\$4.62

SHELVING

File Dividers



Wide-span shelving is deal for bulk storage options. Store large, hand-loaded items easily without a concern for weight load.

SHELVING

Wide-Span

Wide-Span

ITEMID	ITEMNAME	ITEMDESCRIPTION	SYSTEC/GSA PRICE
SYB6915DR36	WIDE-SPAN SHELVING - STARTER UNIT	STARTER UNIT. Accommodates 1 cubic foot box, stored 5 across x 2 high x 1 deep. All beam level utilized for storage.	\$84.80
SYA6915DR36	WIDE-SPAN SHELVING - ADDER UNIT - 69X15 - 6' - 1cu.ft.	ADDER UNIT, 69X15, 6'/72". 3 beam levels, 30 boxes, 53.8 lbs. Accommodates 1 cubic foot box, stored 5 across x 2 high x 1 deep. All beam level utilized for storage.	\$79.80
SYB6915DR47	WIDE-SPAN SHELVING - STARTER UNIT	STARTER UNIT. Accommodates 1 cubic foot box, stored 5 across x 2 high x 1 deep. All beam level utilized for storage.	\$108.78
SYA6915DR47	WIDE-SPAN SHELVING - ADDER UNIT - 69X15 - 7' - 1cu.ft.	ADDER UNIT, 69X15, 7'/84". 4 beam levels, 40 boxes, 68.8 lbs. Accommodates 1 cubic foot box, stored 5 across x 2 high x 1 deep. All beam level utilized for storage.	\$102.72
SYB6915DR59	WIDE-SPAN SHELVING - STARTER UNIT	STARTER UNIT. Accommodates 1 cubic foot box, stored 5 across x 2 high x 1 deep. All beam level utilized for storage.	\$136.90
SYA6915DR59	WIDE-SPAN SHELVING - ADDER UNIT - 69X15 - 9' - 1cu.ft.	ADDER UNIT, 69X15, 9'/108". 5 beam levels, 50 boxes, 86.6 lbs. Accommodates 1 cubic foot box, stored 5 across x 2 high x 1 deep. All beam level utilized for storage.	\$129.06
SYB6930DH36	WIDE-SPAN SHELVING - STARTER UNIT	STARTER UNIT. Accommodates 1 cubic foot box, stored 5 across x 2 high x 2 deep. All beam levels utilized for storage.	\$105.01
SYA6930DH36	WIDE-SPAN SHELVING - ADDER UNIT - 69X30 - 6' - 1cu.ft.	ADDER UNIT, 69X30, 6'/72". 3 beam levels, 60 boxes, 68.5 lbs. Accommodates 1 cubic foot box, stored 5 across x 2 high x 2 deep. All beam levels utilized for storage.	\$100.01
SYB6930DH47	WIDE-SPAN SHELVING - STARTER UNIT	STARTER UNIT. Accommodates 1 cubic foot box, stored 5 across x 2 high x 2 deep. All beam levels utilized for storage.	\$135.74
SYA6930DH47	WIDE-SPAN SHELVING - ADDER UNIT - 69X30 - 7' - 1cu.ft.	ADDER UNIT, 69X30, 7'/84". 4 beam levels, 80 boxes, 88.5 lbs. Accommodates 1 cubic foot box, stored 5 across x 2 high x 2 deep. All beam levels utilized for storage.	\$129.68
SYB6930DH59	WIDE-SPAN SHELVING - STARTER UNIT	STARTER UNIT. Accommodates 1 cubic foot box, stored 5 across x 2 high x 2 deep. All beam levels utilized for storage.	\$170.59
SYA6930DH59	WIDE-SPAN SHELVING - ADDER UNIT - 69X30 - 9' - 1cu.ft.	ADDER UNIT, 69X30, 9'/108". 5 beam levels, 100 boxes, 111.1 lbs. Accommodates 1 cubic foot box, stored 5 across x 2 high x 2 deep. All beam levels utilized for storage.	\$162.76
SYB6948CH36	WIDE-SPAN SHELVING - STARTER UNIT	STARTER UNIT. Accommodates 1 cubic foot box, stored 5 across x 2 high x 3 deep. All beam levels utilized for storage.	\$132.85
SYA6948CH36	WIDE-SPAN SHELVING - ADDER UNIT - 69X48 - 6' - 1cu.ft.	ADDER UNIT, 69X48, 6'/72". 3 beam levels, 60 boxes, 102.4 lbs. Accommodates 1 cubic foot box, stored 5 across x 2 high x 3 deep. All beam levels utilized for storage.	\$127.85
SYB6948CH47	WIDE-SPAN SHELVING - STARTER UNIT	STARTER UNIT. Accommodates 1 cubic foot box, stored 5 across x 2 high x 3 deep. All beam levels utilized for storage.	\$174.59
SYA6948CH47	WIDE-SPAN SHELVING - ADDER UNIT - 69X48 - 7' - 1cu.ft.	ADDER UNIT, 69X48, 7'/84". 4 beam levels, 80 boxes, 133.6 lbs. Accommodates 1 cubic foot box, stored 5 across x 2 high x 3 deep. All beam levels utilized for storage.	\$168.53
SYB6948CH59	WIDE-SPAN SHELVING - STARTER UNIT	STARTER UNIT. Accommodates 1 cubic foot box, stored 5 across x 2 high x 3 deep. All beam levels utilized for storage.	\$220.45
SYA6948CH59	WIDE-SPAN SHELVING - ADDER UNIT - 69X48 - 9' - 1cu.ft.	ADDER UNIT, 69X48, 9'/108". 5 beam levels, 100 boxes, 167.6 lbs. Accommodates 1 cubic foot box, stored 5 across x 2 high x 3 deep. All beam levels utilized for storage.	\$212.62
SYB6924DR36	WIDE-SPAN SHELVING - STARTER UNIT	STARTER UNIT. Accommodates 1.5 cubic foot box, stored 5 across x 2 high x 1 deep. All beam levels utilized for storage.	\$89.44
SYA6924DR36	WIDE-SPAN SHELVING - ADDER UNIT - 69X24 - 6' - 1.5cu.ft.	ADDER UNIT, 69X24, 6'/72". 3 beam levels, 30 boxes, 58.0 lbs. Accommodates 1.5 cubic foot box, stored 5 across x 2 high x 1 deep. All beam levels utilized for storage.	\$84.44

Wide-Span

ITEM ID	ITEM NAME	ITEM DESCRIPTION	SYSTEC/GSA PRICE
SYB6924DR47	WIDE-SPAN SHELVING - STARTER UNIT	STARTER UNIT. Accommodates 1.5 cubic foot box, stored 5 across x 2 high x 1 deep. All beam levels utilized for storage.	\$114.97
SYA6924DR47	WIDE-SPAN SHELVING - ADDER UNIT - 69X24 - 7' - 1.5cu.ft.	ADDER UNIT, 69X24, 7/8", 4 beam levels, 40 boxes, 74.4 lbs. Accommodates 1.5 cubic foot box, stored 5 across x 2 high x 1 deep. All beam levels utilized for storage.	\$108.91
SYB6924DR59	WIDE-SPAN SHELVING - STARTER UNIT	STARTER UNIT. Accommodates 1.5 cubic foot box, stored 5 across x 2 high x 1 deep. All beam levels utilized for storage.	\$144.64
SYA6924DR59	WIDE-SPAN SHELVING - ADDER UNIT - 69X24 - 9' - 1.5cu.ft.	ADDER UNIT, 69X24, 9/108", 5 beam levels, 50 boxes, 93.6 lbs. Accommodates 1.5 cubic foot box, stored 5 across x 2 high x 1 deep. All beam levels utilized for storage.	\$136.80
SYB6915PR36	WIDE-SPAN SHELVING - STARTER UNIT	STARTER UNIT. Accommodates 1 cubic foot box, stored 5 across x 2 high x 2 deep. All beam levels utilized for storage.	\$171.66
SYA6915PR36	WIDE-SPAN SHELVING - ADDER UNIT - 69X15 - 6' - 1cu.ft.	ADDER UNIT, 69X15, 6/72", 3 beam levels, 30 boxes, 83.8 lbs. Accommodates 1 cubic foot box, stored 5 across x 2 high x 2 deep. All beam levels utilized for storage.	\$166.66
SYB6915PR47	WIDE-SPAN SHELVING - STARTER UNIT	STARTER UNIT. Accommodates 1 cubic foot box, stored 5 across x 2 high x 2 deep. All beam levels utilized for storage.	\$220.34
SYA6915PR47	WIDE-SPAN SHELVING - ADDER UNIT - 69X15 - 7' - 1cu.ft.	ADDER UNIT, 69X15, 7/84", 4 beam levels, 40 boxes, 108.8 lbs. Accommodates 1 cubic foot box, stored 5 across x 2 high x 2 deep. All beam levels utilized for storage.	\$218.54
SYB6930PH36	WIDE-SPAN SHELVING - STARTER UNIT	STARTER UNIT. Accommodates 1 cubic foot box, stored 5 across x 2 high x 2 deep. All beam levels utilized for storage. Includes records storage support angles. No decking required.	\$244.94
SYA6930PH36	WIDE-SPAN SHELVING - ADDER UNIT - 69X30 - 6' - 1cu.ft.	ADDER UNIT, 69X30, 6/72", 3 beam levels, 60 boxes, 128.5 lbs. Accommodates 1 cubic foot box, stored 5 across x 2 high x 2 deep. All beam levels utilized for storage. Includes records storage support angles. No decking required.	\$239.94
SYB6930PH47	WIDE-SPAN SHELVING - STARTER UNIT	STARTER UNIT. Accommodates 1 cubic foot box, stored 5 across x 2 high x 2 deep. All beam levels utilized for storage. Includes records storage support angles. No decking required.	\$319.97
SYA6930PH47	WIDE-SPAN SHELVING - ADDER UNIT - 69X30 - 7' - 1cu.ft.	ADDER UNIT, 69X30, 7/84", 4 beam levels, 80 boxes, 168.6 lbs. Accommodates 1 cubic foot box, stored 5 across x 2 high x 2 deep. All beam levels utilized for storage. Includes records storage support angles. No decking required.	\$313.91
SYB4215SR66	WIDE-SPAN SHELVING - STARTER UNIT	STARTER UNIT. Accommodates 1 cubic foot box, stored 3 across x 1 high x 1 deep. All beam levels utilized for storage.	\$79.15
SYA4215SR66	WIDE-SPAN SHELVING - ADDER UNIT - 42X15 - 6' - 1cu.ft.	ADDER UNIT, 42X15, 6/72", 6 beam levels, 18 boxes, 48.8 lbs. Accommodates 1 cubic foot box, stored 3 across x 1 high x 1 deep. All beam levels utilized for storage.	\$74.16
SYB4215SR77	WIDE-SPAN SHELVING - STARTER UNIT	STARTER UNIT. Accommodates 1 cubic foot box, stored 3 across x 1 high x 1 deep. All beam levels utilized for storage.	\$88.96
SYA4215SR77	WIDE-SPAN SHELVING - ADDER UNIT - 42X15 - 7' - 1cu.ft.	ADDER UNIT, 42X15, 7/84", 7 beam levels, 21 boxes, 55.4 lbs. Accommodates 1 cubic foot box, stored 3 across x 1 high x 1 deep. All beam levels utilized for storage.	\$82.89
SYB4215SR88	WIDE-SPAN SHELVING - STARTER UNIT	STARTER UNIT. Accommodates 1 cubic foot box, stored 3 across x 1 high x 1 deep. All beam levels utilized for storage.	\$98.69
SYA4215SR88	WIDE-SPAN SHELVING - ADDER UNIT - 42X15 - 8' - 1cu.ft.	ADDER UNIT, 42X15, 8/96", 8 beam levels, 24 boxes, 61.6 lbs. Accommodates 1 cubic foot box, stored 3 across x 1 high x 1 deep. All beam levels utilized for storage.	\$91.53
SYB4224SR66	WIDE-SPAN SHELVING - STARTER UNIT	STARTER UNIT. Accommodates 1.5 cubic foot box, stored 3 across x 1 high x 1 deep. All beam levels utilized for storage. For use with decking.	\$83.02
SYA4224SR66	WIDE-SPAN SHELVING - ADDER UNIT - 42X24 - 6' - 1.5cu.ft.	ADDER UNIT, 42X24, 6/72", 6 beam levels, 18 boxes, 52.4 lbs. Accommodates 1.5 cubic foot box, stored 3 across x 1 high x 1 deep. All beam levels utilized for storage. For use with decking.	\$78.03
SYB4224SR77	WIDE-SPAN SHELVING - STARTER UNIT	STARTER UNIT. Accommodates 1.5 cubic foot box, stored 3 across x 1 high x 1 deep. All beam levels utilized for storage. For use with decking.	\$92.82
SYA4224SR77	WIDE-SPAN SHELVING - ADDER UNIT - 42X24 - 7' - 1.5cu.ft.	ADDER UNIT, 42X24, 7/84", 7 beam levels, 21 boxes, 59.0 lbs. Accommodates 1.5 cubic foot box, stored 3 across x 1 high x 1 deep. All beam levels utilized for storage. For use with decking.	\$86.76
SYB4224SR88	WIDE-SPAN SHELVING - STARTER UNIT	STARTER UNIT. Accommodates 1.5 cubic foot box, stored 3 across x 1 high x 1 deep. All beam levels utilized for storage. For use with decking.	\$102.56
SYA4224SR88	WIDE-SPAN SHELVING - ADDER UNIT - 42X24 - 8' - 1.5cu.ft.	ADDER UNIT, 42X24, 8/96", 8 beam levels, 24 boxes, 65.2 lbs. Accommodates 1.5 cubic foot box, stored 3 across x 1 high x 1 deep. All beam levels utilized for storage. For use with decking.	\$95.40

SHELVING

Wide-Span



Ideal for stock room, factory or office where extra storage space is needed. These heavy-duty steel shelving units have been engineered to adapt to your storage requirements. Roll-formed steel ribbed shelves with integral box-form reinforced front and rear edges for greater load capacity. Shelves are easily adjusted. Finished in long lasting gray baked-on enamel to prevent corrosion and wear.

SHELVING

Clip-Type

Clip-Type			
ITEMID	ITEMNAME	ITEMDESCRIPTION	SYSTEC/GSA PRICE
SYRS-423075	CLIP-TYPE SHELVING - STARTER - 42x30 - 6' - 1cu.ft.	All beam levels utilized for storage. Records Storage Box Information: 1 cubic foot = 12-7/8" wide x 15-5/8" deep x 10-1/2" high, 1.5 cubic foot = 12-5/8" wide x 24" deep x 10-1/4" high. Record storage boxes not included. Units priced with beaded front posts and PLUS 2 shelves.	\$195.05
SYRA-423075	CLIP-TYPE SHELVING - ADDER - 42x30 - 6' - 1cu.ft.	ADDER , 42X30, 6'3"/75", 4 beam levels, 48 boxes, 93.0 lbs. Accommodates 1 cubic foot box, stored 3 across x 2 high x 2 deep. All beam levels utilized for storage. Records Storage Box Information: 1 cubic foot = 12-7/8" wide x 15-5/8" deep x 10-1/2" high, 1.5 cubic foot = 12-5/8" wide x 24" deep x 10-1/4" high. Record storage boxes not included. Units priced with beaded front posts and PLUS 2 shelves.	\$172.49
SYRS-423275	CLIP-TYPE SHELVING - STARTER - 42X32 - 6' - 1cu.ft.	STARTER , 42X32, 6'3"/75", 4 beam levels, 48 boxes, 107.0 lbs. Accommodates 1 cubic foot box, stored 3 across x 2 high x 2 deep. All beam levels utilized for storage. Records Storage Box Information: 1 cubic foot = 12-7/8" wide x 15-5/8" deep x 10-1/2" high, 1.5 cubic foot = 12-5/8" wide x 24" deep x 10-1/4" high. Record storage boxes not included. Units priced with beaded front posts and PLUS 2 shelves.	\$205.40
SYRA-423275	CLIP-TYPE SHELVING - ADDER - 42X32 - 6' - 1cu.ft.	ADDER , 42X32, 6'3"/75", 4 beam levels, 48 boxes, 94.0 lbs. Accommodates 1 cubic foot box, stored 3 across x 2 high x 2 deep. All beam levels utilized for storage. Records Storage Box Information: 1 cubic foot = 12-7/8" wide x 15-5/8" deep x 10-1/2" high, 1.5 cubic foot = 12-5/8" wide x 24" deep x 10-1/4" high. Record storage boxes not included. Units priced with beaded front posts and PLUS 2 shelves.	\$182.70
SYRS-423099	CLIP-TYPE SHELVING - STARTER - 42X30 - 8' - 1cu.ft.	STARTER , 42X30, 8'3"/99", 5 beam levels, 60 boxes, 138.0 lbs. Accommodates 1 cubic foot box, stored 3 across x 2 high x 2 deep. All beam levels utilized for storage. Records Storage Box Information: 1 cubic foot = 12-7/8" wide x 15-5/8" deep x 10-1/2" high, 1.5 cubic foot = 12-5/8" wide x 24" deep x 10-1/4" high. Record storage boxes not included. Units priced with beaded front posts and PLUS 2 shelves.	\$259.26
SYRA-423099	CLIP-TYPE SHELVING - ADDER - 42X30 - 8' - 1cu.ft.	ADDER , 42X30, 8'3"/99", 5 beam levels, 60 boxes, 119.0 lbs. Accommodates 1 cubic foot box, stored 3 across x 2 high x 2 deep. All beam levels utilized for storage. Records Storage Box Information: 1 cubic foot = 12-7/8" wide x 15-5/8" deep x 10-1/2" high, 1.5 cubic foot = 12-5/8" wide x 24" deep x 10-1/4" high. Record storage boxes not included. Units priced with beaded front posts and PLUS 2 shelves.	\$219.58
SYRS-423299	CLIP-TYPE SHELVING - STARTER - 42X32 - 8' - 1cu.ft.	STARTER , 42X32, 8'3"/99", 5 beam levels, 60 boxes, 139.0 lbs. Accommodates 1 cubic foot box, stored 3 across x 2 high x 2 deep. All beam levels utilized for storage. Records Storage Box Information: 1 cubic foot = 12-7/8" wide x 15-5/8" deep x 10-1/2" high, 1.5 cubic foot = 12-5/8" wide x 24" deep x 10-1/4" high. Record storage boxes not included. Units priced with beaded front posts and PLUS 2 shelves.	\$272.41
SYRA-423299	CLIP-TYPE SHELVING - ADDER - 42X32 - 8' - 1cu.ft.	ADDER , 42X32, 8'3"/99", 5 beam levels, 60 boxes, 120.0 lbs. Accommodates 1 cubic foot box, stored 3 across x 2 high x 2 deep. All beam levels utilized for storage. Records Storage Box Information: 1 cubic foot = 12-7/8" wide x 15-5/8" deep x 10-1/2" high, 1.5 cubic foot = 12-5/8" wide x 24" deep x 10-1/4" high. Record storage boxes not included. Units priced with beaded front posts and PLUS 2 shelves.	\$232.45
SYRS-422475	CLIP-TYPE SHELVING - STARTER - 42X24 - 6' - 1.5cu.ft.	STARTER , 42X24, 6'3"/75", 4 beam levels, 24 boxes, 102.0 lbs. Accommodates 1.5 cubic foot box, stored 3 across x 2 high x 2 deep. All beam levels utilized for storage. Records Storage Box Information: 1 cubic foot = 12-7/8" wide x 15-5/8" deep x 10-1/2" high, 1.5 cubic foot = 12-5/8" wide x 24" deep x 10-1/4" high. Record storage boxes not included. Units priced with beaded front posts and PLUS 2 shelves.	\$171.06

Clip-Type

ITEMID	ITEMNAME	ITEMDESCRIPTION	SYSTEC/GSA PRICE
SYRA-422475	CLIP-TYPE SHELVING - ADDER - 42X24 - 6' - 1.5cu.ft.	ADDER , 42X24, 6'3"/75", 4 beam levels, 24 boxes, 90.0 lbs. Accommodates 1.5 cubic foot box, stored 3 across x 2 high x 2 deep. All beam levels utilized for storage. Records Storage Box Information: 1 cubic foot = 12-7/8" wide x 15-5/8" deep x 10-1/2" high, 1.5 cubic foot = 12-5/8" wide x 24" deep x 10-1/4" high. Record storage boxes not included. Units priced with beaded front posts and PLUS 2 shelves.	\$148.83
SYRS-422499	CLIP-TYPE SHELVING - STARTER - 42X32 - 8' - 1.5cu.ft.	STARTER , 42X32, 8'3"/99", 5 beam levels, 30 boxes, 133.0 lbs. Accommodates 1.5 cubic foot box, stored 3 across x 2 high x 2 deep. All beam levels utilized for storage. Records Storage Box Information: 1 cubic foot = 12-7/8" wide x 15-5/8" deep x 10-1/2" high, 1.5 cubic foot = 12-5/8" wide x 24" deep x 10-1/4" high. Record storage boxes not included. Units priced with beaded front posts and PLUS 2 shelves.	\$228.79
SYRA-422499	CLIP-TYPE SHELVING - ADDER - 42X32 - 8' - 1.5cu.ft.	ADDER , 42X32, 8'3"/99", 5 beam levels, 30 boxes, 115.0 lbs. Accommodates 1.5 cubic foot box, stored 3 across x 2 high x 2 deep. All beam levels utilized for storage. Records Storage Box Information: 1 cubic foot = 12-7/8" wide x 15-5/8" deep x 10-1/2" high, 1.5 cubic foot = 12-5/8" wide x 24" deep x 10-1/4" high. Record storage boxes not included. Units priced with beaded front posts and PLUS 2 shelves.	\$189.76
SYXS-361887	CLIP-TYPE X-RAY STORAGE - STARTER - 36X18 - 7'	Plus 1 shelves. Important: Wall, floor or top tie anchoring is recommended for units when the height to depth ratio exceeds 4. Example: A 7'3"/87" high X 18" deep unit has a height to depth ratio of 4.83. Two 8'3"/99" high X 12" deep units back-to-back have a height to depth ratio of 4.12. These units should be attached to a firm restraint, such as a floor, wall or tied overhead across the aisle to an opposite upright assembly.	\$459.37
SYXA-361887	CLIP-TYPE X-RAY STORAGE - ADDER - 36X18 - 7'	ADDER. 175" of filing storage, 5 filing levels., 36X18, 7'3", 87", 176.0 lbs. Units priced with beaded closed sides, #445 White backs and Plus 1 shelves. Important: Wall, floor or top tie anchoring is recommended for units when the height to depth ratio exceeds 4. Example: A 7'3"/87" high X 18" deep unit has a height to depth ratio of 4.83. Two 8'3"/99" high X 12" deep units back-to-back have a height to depth ratio of 4.12. These units should be attached to a firm restraint, such as a floor, wall or tied overhead across the aisle to an opposite upright assembly.	\$413.29
SYXS-3618100	CLIP-TYPE X-RAY STORAGE - STARTER - 36X18 - 8'	STARTER. 210" of filing storage, 6 filing levels., 36X18, 8'4-1/2"/100-1/2", 210.0 lbs. Units priced with beaded closed sides, #445 White backs and Plus 1 shelves. Important: Wall, floor or top tie anchoring is recommended for units when the height to depth ratio exceeds 4. Example: A 7'3"/87" high X 18" deep unit has a height to depth ratio of 4.83. Two 8'3"/99" high X 12" deep units back-to-back have a height to depth ratio of 4.12. These units should be attached to a firm restraint, such as a floor, wall or tied overhead across the aisle to an opposite upright assembly.	\$553.22
SYXA-3618100	CLIP-TYPE X-RAY STORAGE - ADDER - 36X18 - 8'	ADDER. 210" of filing storage, 6 filing levels., 36X18, 8'4-1/2"/100-1/2", 184.0 lbs. Units priced with beaded closed sides, #445 White backs and Plus 1 shelves. Important: Wall, floor or top tie anchoring is recommended for units when the height to depth ratio exceeds 4. Example: A 7'3"/87" high X 18" deep unit has a height to depth ratio of 4.83. Two 8'3"/99" high X 12" deep units back-to-back have a height to depth ratio of 4.12. These units should be attached to a firm restraint, such as a floor, wall or tied overhead across the aisle to an opposite upright assembly.	\$492.78

SHELVING

Clip-Type



ThinFile provides everything you need for efficient filing of end-tab file folders and much more. Units are preassembled and ready for immediate use. ThinFile comes in preconfigured styles or adjustable styles that have shelves, drawers and accessories for end-tab folders, x-ray files, binders, top-tab file folders, hanging file systems, microfilm, disk and tape media storage. Interior shelves are adjustable in 1/2" increments.

Units can be easily modified or field-retrofitted as your needs change.

CABINETS

Letter Size

Letter Size Cabinets

ITEMID	ITEMNAME	ITEMDESCRIPTION	SYSTEC/GSA PRICE
SYSL-36-67-ND	LETTER SIZE CABINETS - 6 TIER ADJUSTABLE - INSIDE HEIGHT 67" - 70X36X14	Empty letter, 70" high with no shelves and no door. The cabinet bottom is the bottom shelf. Inside height 67", 70X36X14, 115 lbs.	\$575.82
SYSL-42-67-ND	LETTER SIZE CABINETS - 6 TIER ADJUSTABLE - INSIDE HEIGHT 67" - 70X42X14	Empty letter, 70" high with no shelves and no door. The cabinet bottom is the bottom shelf. Inside height 67", 70X42X14, 130 lbs.	\$598.49
SYSL-48-67-ND	LETTER SIZE CABINETS - 6 TIER ADJUSTABLE - INSIDE HEIGHT 67" - 70X48X14	Empty letter, 70" high with no shelves and no door. The cabinet bottom is the bottom shelf. Inside height 67", 70X48X14, 140 lbs.	\$613.90
SYSL-36-6A-ND	LETTER SIZE CABINETS - 6 TIER ADJUSTABLE - 10.25 VERTICAL CLEARANCE - 70X36X14	Preconfigured letter with 6 shelves and no door. The tambour door can be added later to a "no door" cabinet. 10.25 vertical clearance, 67" inside height, 70X36X14, 170 lbs, 3 divider shelves 204 filing inches.	\$872.34
SYSL-42-6A-ND	LETTER SIZE CABINETS - 6 TIER ADJUSTABLE - 10.25 VERTICAL CLEARANCE - 70X42X14	Preconfigured letter with 6 shelves and no door. The tambour door can be added later to a "no door" cabinet. 10.25 vertical clearance, 67" inside height, 70X42X14, 190 lbs, 4 divider shelves, 240 filing inches.	\$948.51
SYSL-48-6A-ND	LETTER SIZE CABINETS - 6 TIER ADJUSTABLE - 10.25 VERTICAL CLEARANCE - 70X48X14	Preconfigured letter with 6 shelves and no door. The tambour door can be added later to a "no door" cabinet. 10.25 vertical clearance, 67" inside height, 70X48X14, 200 lbs, 4 divider shelves, 276 filing inches.	\$990.23
SYSL-36-67-DE	LETTER SIZE CABINETS - 6 TIER ADJUSTABLE - INSIDE HEIGHT 67" - 78X36X14	Empty letter, 78" high with no shelves, with door. The cabinet bottom is bottom shelf. Inside height 67", 78X36X14-1/2, 175 lbs.	\$1,151.64
SYSL42-67-DE	LETTER SIZE CABINETS - 6 TIER ADJUSTABLE - INSIDE HEIGHT 67" - 78X42X14	Empty letter, 78" high with no shelves, with door. The cabinet bottom is bottom shelf. Inside height 67", 78X42X14-1/2, 190 lbs.	\$1,216.93
SYSL-48-67-DE	LETTER SIZE CABINETS - 6 TIER ADJUSTABLE - INSIDE HEIGHT 67" - 78X48X14	Empty letter, 78" high with no shelves, with door. The cabinet bottom is bottom shelf. Inside height 67", 78X48X14-1/2, 200 lbs.	\$1,259.55
SYSL-36-6A-DE	LETTER SIZE CABINETS - 6 TIER ADJUSTABLE - 10.25 VERTICAL CLEARANCE - 78X36X14	Preconfigured letter with 6 shelves, with door. For low profile "Cam Lock", replace "Ergo Lock" "DE" suffix with "DC" and note clearly on order. 10.25 vertical clearance, 67" inside height, 78X36X14-1/2, 220 lbs, 3 divider shelves, 204 filing inches.	\$1,464.48
SYSL-42-6A-DE	LETTER SIZE CABINETS - 6 TIER ADJUSTABLE - 10.25 VERTICAL CLEARANCE - 78X42X14	Preconfigured letter with 6 shelves, with door. For low profile "Cam Lock", replace "Ergo Lock" "DE" suffix with "DC" and note clearly on order. 10.25 vertical clearance, 67" inside height, 78X42X14-1/2, 255 lbs, 4 divider shelves, 240 filing inches.	\$1,566.95
SYSL-48-6A-DE	LETTER SIZE CABINETS - 6 TIER ADJUSTABLE - 10.25 VERTICAL CLEARANCE - 78X48X14	Preconfigured letter with 6 shelves, with door. For low profile "Cam Lock", replace "Ergo Lock" "DE" suffix with "DC" and note clearly on order. 10.25 vertical clearance, 67" inside height, 78X48X14-1/2, 290 lbs, 4 divider shelves, 276 filing inches.	\$1,636.78
SYSL-36-78-ND	LETTER SIZE CABINETS - 7 TIER ADJUSTABLE - INSIDE HEIGHT 78" - 81X36X14	Empty letter, 81" high with no shelves and no door. The cabinet bottom is the bottom shelf. Inside height 78", 81X36X14, 125 lbs.	\$586.70
SYSL-42-78-ND	LETTER SIZE CABINETS - 7 TIER ADJUSTABLE - INSIDE HEIGHT 78" - 81X42X14	Empty letter, 81" high with no shelves and no door. The cabinet bottom is the bottom shelf. Inside height 78", 81X42X14, 140 lbs.	\$608.46
SYSL48-78-ND	LETTER SIZE CABINETS - 7 TIER ADJUSTABLE - INSIDE HEIGHT 78" - 81X48X14	Empty letter, 81" high with no shelves and no door. The cabinet bottom is the bottom shelf. Inside height 78", 81X48X14, 150 lbs.	\$624.79
SYSL-36-7A-ND	LETTER SIZE CABINETS - 7 TIER ADJUSTABLE - 10.25 VERTICAL CLEARANCE - 81X36X14	Preconfigured letter with 7 shelves and no door. The tambour door can be added later to a "no door" cabinet. 10.25 vertical clearance, 78" inside height, 81X36X14, 210 lbs, 3 divider shelves, 238 filing inches.	\$942.17
SYSL-42-7A-ND	LETTER SIZE CABINETS - 7 TIER ADJUSTABLE - 10.25 VERTICAL CLEARANCE - 81X42X14	Preconfigured letter with 7 shelves and no door. The tambour door can be added later to a "no door" cabinet. 10.25 vertical clearance, 78" inside height, 81X42X14, 200 lbs, 4 divider shelves, 280 filing inches.	\$1,029.22
SYSL-48-7A-ND	LETTER SIZE CABINETS - 7 TIER ADJUSTABLE - 10.25 VERTICAL CLEARANCE - 81X48X14	Preconfigured letter with 7 shelves and no door. The tambour door can be added later to a "no door" cabinet. 10.25 vertical clearance, 78" inside height, 81X48X14, 210 lbs, 4 divider shelves, 322 filing inches.	\$1,077.28

Letter Size Cabinets

ITEMID	ITEMNAME	ITEMDESCRIPTION	SYSTEC/GSA PRICE
SYSL-36-78-DE	LETTER SIZE CABINETS - 7 TIER ADJUSTABLE - INSIDE HEIGHT 78" - 89X36X14	Empty letter, 89" high with no shelves, with door. The cabinet bottom is the bottom shelf. Inside height 78", 89X36X14-1/2, 195 lbs.	\$1,178.84
SYSL-42-78-DE	LETTER SIZE CABINETS - 7 TIER ADJUSTABLE - INSIDE HEIGHT 78" - 89X42X14	Empty letter, 89" high with no shelves, with door. The cabinet bottom is the bottom shelf. Inside height 78", 89X42X14-1/2, 205 lbs.	\$1,227.81
SYSL-48-78-DE	LETTER SIZE CABINETS - 7 TIER ADJUSTABLE - INSIDE HEIGHT 78" - 89X48X14	Empty letter, 89" high with no shelves, with door. The cabinet bottom is the bottom shelf. Inside height 78", 89X48X14-1/2, 220 lbs.	\$1,259.55
SYSL-36-7A-DE	LETTER SIZE CABINETS - 7 TIER ADJUSTABLE - 10.25 VERTICAL CLEARANCE - 89X36X14	Preconfigured letter with 7 shelves, with door. For low profile "Cam Lock", replace "Ergo Lock" "DE" suffix with "DC" and note clearly on order. 10.25 vertical clearance, 78" inside height, 89X36X14-1/2, 230 lbs, 3 divider shelves, 238 filing inches.	\$1,534.31
SYSL-42-7A-DE	LETTER SIZE CABINETS - 7 TIER ADJUSTABLE - 10.25 VERTICAL CLEARANCE - 89X42X14	Preconfigured letter with 7 shelves, with door. For low profile "Cam Lock", replace "Ergo Lock" "DE" suffix with "DC" and note clearly on order. 10.25 vertical clearance, 78" inside height, 9X42X14-1/2, 270 lbs, 4 divider shelves, 280 filing inches.	\$1,647.66
SYSL-48-7A-DE	LETTER SIZE CABINETS - 7 TIER ADJUSTABLE - 10.25 VERTICAL CLEARANCE - 89X48X14	Preconfigured letter with 7 shelves, with door. For low profile "Cam Lock", replace "Ergo Lock" "DE" suffix with "DC" and note clearly on order. 10.25 vertical clearance, 78" inside height, 89X48X14- 1/2, 310 lbs, 4 divider shelves, 322 filing inches.	\$1,722.92

Legal Size Cabinets

ITEMID	ITEMNAME	ITEMDESCRIPTION	SYSTEC/GSA PRICE
SYSG-36-67-ND	LEGAL SIZE CABINETS - 6 TIER ADJUSTABLE - INSIDE HEIGHT 67" - 70X36X18	Empty legal, 70" high with no shelves and no door. The cabinet bottom is the bottom shelf. Inside height 67", 70X36X18-1/2, 150 lbs.	\$667.41
SYSG-42-67-ND	LEGAL SIZE CABINETS - 6 TIER ADJUSTABLE - INSIDE HEIGHT 67" - 70X42X18	Empty legal, 70" high with no shelves and no door. The cabinet bottom is the bottom shelf. Inside height 67", 70X42X18-1/2, 170 lbs.	\$690.08
SYSG-48-67-ND	LEGAL SIZE CABINETS - 6 TIER ADJUSTABLE - INSIDE HEIGHT 67" - 70X48X18	Empty legal, 70" high with no shelves and no door. The cabinet bottom is the bottom shelf. Inside height 67", 70X48X18-1/2, 185 lbs.	\$706.40
SYSG-36-6A-ND	LEGAL SIZE CABINETS - 6 TIER ADJUSTABLE - 10.25 VERTICAL CLEARANCE - 70X36X18	Preconfigured legal with 6 shelves and no door. The tambour door can be added later to a "no door" cabinet. 10.25 vertical clearance, 67" inside height, 70X36X18-1/2, 210 lbs, 3 divider shelves, 204 filing inches.	\$990.23
SYSG-42-6A-ND	LEGAL SIZE CABINETS - 6 TIER ADJUSTABLE - 10.25 VERTICAL CLEARANCE - 70X42X18	Preconfigured legal with 6 shelves and no door. The tambour door can be added later to a "no door" cabinet. 10.25 vertical clearance, 67" inside height, 70X42X18-1/2, 235 lbs, 4 divider shelves, 240 filing inches.	\$1,066.40
SYSG-48-6A-ND	LEGAL SIZE CABINETS - 6 TIER ADJUSTABLE - 10.25 VERTICAL CLEARANCE - 70X48X18	Preconfigured legal with 6 shelves and no door. The tambour door can be added later to a "no door" cabinet. 10.25 vertical clearance, 67" inside height, 70X48X18-1/2, 245 lbs, 4 divider shelves, 276 filing inches.	\$1,109.92
SYSG-36-67-DE	LEGAL SIZE CABINETS - 6 TIER ADJUSTABLE - INSIDE HEIGHT 67" - 78X36X19	Empty legal, 78" high with no shelves, with door. The cabinet bottom is bottom shelf. Inside height 67", 78X36X19, 200 lbs.	\$1,259.55
SYSG-42-67-DE	LEGAL SIZE CABINETS - 6 TIER ADJUSTABLE - INSIDE HEIGHT 67" - 78X42X19	Empty legal, 78" high with no shelves, with door. The cabinet bottom is bottom shelf. Inside height 67", 78X42X19, 220 lbs.	\$1,308.51
SYSG-48-67-DE	LEGAL SIZE CABINETS - 6 TIER ADJUSTABLE - INSIDE HEIGHT 67" - 78X48X19	Empty legal, 78" high with no shelves, with door. The cabinet bottom is bottom shelf. Inside height 67", 78X48X19, 235 lbs.	\$1,352.04
SYSG-36-6A-DE	LEGAL SIZE CABINETS - 6 TIER ADJUSTABLE - 10.25 VERTICAL CLEARANCE - 78X36X19	Preconfigured legal with 6 shelves, with door. For low profile "Cam Lock", replace "Ergo Lock" "DE" suffix with "DC" and note clearly on order. 10.25 vertical clearance, 67" inside height, 78X36X19, 270 lbs, 3 divider shelves, 204 filing inches.	\$1,582.37
SYSG-42-6A-DE	LEGAL SIZE CABINETS - 6 TIER ADJUSTABLE - 10.25 VERTICAL CLEARANCE - 78X42X19	Preconfigured legal with 6 shelves, with door. For low profile "Cam Lock", replace "Ergo Lock" "DE" suffix with "DC" and note clearly on order. 10.25 vertical clearance, 67" inside height, 78X42X19, 315 lbs, 4 divider shelves, 240 filing inches.	\$1,685.74
SYSG-48-6A-DE	LEGAL SIZE CABINETS - 6 TIER ADJUSTABLE - 10.25 VERTICAL CLEARANCE - 78X48X19	Preconfigured legal with 6 shelves, with door. For low profile "Cam Lock", replace "Ergo Lock" "DE" suffix with "DC" and note clearly on order. 10.25 vertical clearance, 67" inside height, 78X48X19, 360 lbs, 4 divider shelves, 276 filing inches.	\$1,755.57
SYSG-36-78-ND	LEGAL SIZE CABINETS - 7 TIER ADJUSTABLE - INSIDE HEIGHT 78" - 81X36X18	Empty legal, 81" high with no shelves and no door. The cabinet bottom is the bottom shelf. Inside height 78", 81X36X18-1/2, 160 lbs.	\$679.19
SYSG-42-78-ND	LEGAL SIZE CABINETS - 7 TIER ADJUSTABLE - INSIDE HEIGHT 78" - 81X42X18	Empty legal, 81" high with no shelves and no door. The cabinet bottom is the bottom shelf. Inside height 78", 81X42X18-1/2, 180 lbs.	\$700.05

CABINETS

Letter and Legal Size



Legal Size Cabinets

ITEMID	ITEMNAME	ITEMDESCRIPTION	SYSTEC/GSA PRICE
SYSG-48-78-ND	LEGAL SIZE CABINETS - 7 TIER ADJUSTABLE - INSIDE HEIGHT 78" - 81X48X18	Empty legal, 81" high with no shelves and no door. The cabinet bottom is the bottom shelf. Inside height 78", 81X48X18-1/2, 195 lbs.	\$716.37
SYSG-36-7A-ND	LEGAL SIZE CABINETS - 7 TIER ADJUSTABLE - 10.25 VERTICAL CLEARANCE - 81X36X18	Preconfigured legal with 7 shelves and no door. The tambour door can be added later to a "no door" cabinet. 10.25 vertical clearance, 78" inside height, 81X36X18-1/2, 225 lbs, 3 divider shelves, 238 filing inches.	\$1,066.40
SYSG-42-7A-ND	LEGAL SIZE CABINETS - 7 TIER ADJUSTABLE - 10.25 VERTICAL CLEARANCE - 81X42X18	Preconfigured legal with 7 shelves and no door. The tambour door can be added later to a "no door" cabinet. 10.25 vertical clearance, 78" inside height, 81X42X18-1/2, 245 lbs, 4 divider shelves, 280 filing inches.	\$1,098.14
SYSG-48-7A-ND	LEGAL SIZE CABINETS - 7 TIER ADJUSTABLE - 10.25 VERTICAL CLEARANCE - 81X48X18	Preconfigured legal with 7 shelves and no door. The tambour door can be added later to a "no door" cabinet. 10.25 vertical clearance, 78" inside height, 81X48X18-1/2, 255 lbs, 4 divider shelves, 322 filing inches.	\$1,200.60
SYSG-36-78-DE	LEGAL SIZE CABINETS - 7 TIER ADJUSTABLE - INSIDE HEIGHT 78" - 89X36X19	Empty legal, 89" high with no shelves, with door. The cabinet bottom is the bottom shelf. Inside height 78", 89X36X19, 210 lbs.	\$1,271.34
SYSG-42-78-DE	LEGAL SIZE CABINETS - 7 TIER ADJUSTABLE - INSIDE HEIGHT 78" - 89X42X19	Empty legal, 89" high with no shelves, with door. The cabinet bottom is the bottom shelf. Inside height 78", 89X42X19, 230 lbs.	\$1,319.40
SYSG-48-78-DE	LEGAL SIZE CABINETS - 7 TIER ADJUSTABLE - INSIDE HEIGHT 78" - 89X48X19	Empty legal, 89" high with no shelves, with door. The cabinet bottom is the bottom shelf. Inside height 78", 89X48X19, 245 lbs.	\$1,362.92
SYSG-36-7A-DE	LEGAL SIZE CABINETS - 7 TIER ADJUSTABLE - 10.25 VERTICAL CLEARANCE - 89X36X19	Preconfigured legal with 7 shelves, with door. For low profile "Cam Lock", replace "Ergo Lock" "DE" suffix with "DC" and note clearly on order. 10.25 vertical clearance, 78" inside height, 89X36X19, 285 lbs, 3 divider shelves, 238 filing inches.	\$1,658.54
SYSG-42-7A-DE	LEGAL SIZE CABINETS - 7 TIER ADJUSTABLE - 10.25 VERTICAL CLEARANCE - 89X42X19	Preconfigured legal with 7 shelves, with door. For low profile "Cam Lock", replace "Ergo Lock" "DE" suffix with "DC" and note clearly on order. 10.25 vertical clearance, 78" inside height, 89X42X19, 335 lbs, 4 divider shelves, 280 filing inches.	\$1,770.98
SYSG-48-7A-DE	LEGAL SIZE CABINETS - 7 TIER ADJUSTABLE - 10.25 VERTICAL CLEARANCE - 89X48X19	Preconfigured legal with 7 shelves, with door. For low profile "Cam Lock", replace "Ergo Lock" "DE" suffix with "DC" and note clearly on order. 10.25 vertical clearance, 78" inside height, 89X48X19, 385 lbs, 4 divider shelves, 322 filing inches.	\$1,847.15

Cabinets with Drawers

ITEMID	ITEMNAME	ITEMDESCRIPTION	SYSTEC/GSA PRICE
SYGT81-14-X	LETTER SIZE CABINETS - LETTER SIZE W/EMPTY DRAWERS, NO SHELVES, ADJUSTABLE - 81"	81", I.D. 72, 81X12OX30-1/4, 4 drawers, 1050 lbs	\$5,059.95
SYGT90-14-X	LETTER SIZE CABINETS - LETTER SIZE W/EMPTY DRAWERS, NO SHELVES, ADJUSTABLE - 90"	90", I.D. 81, 81X12OX30-1/4, 4 drawers, 1200 lbs	\$5,275.77
SYGS-14-SS	LETTER SIZE CABINETS - SLOTTED SHELF FOR 14" DRAWER	SLOTTED SHELF FOR 14" DRAWER, 3/4X36X11, 14 lbs	\$48.06
SYGS-14-BS	LETTER SIZE CABINETS - BINDER SHELF FOR 14" DRAWER	BINDER SHELF FOR 14" DRAWER, 3/4X36X13, 15 lbs	\$51.69
SYGS-14-FS	LETTER SIZE CABINETS - FLAT SHELF FOR 14" DRAWER	FLAT SHELF FOR 14" DRAWER, 3/4X36X13, 13 lbs	\$43.53
SYGT81-14-6	LETTER SIZE CABINETS - LETTER SIZE W/ADJUSTABLE DRAWERS & SHELVES - 81"	81", 6 SHELVES, 81X12OX30-1/4, 1400 lbs. Units come standard with slotted shelves with 3 adjustable dividers per shelf.	\$6,223.38
SYG190-14-7	LETTER SIZE CABINETS - LETTER SIZE W/ADJUSTABLE DRAWERS & SHELVES - 90"	90", 7 SHELVES, 90X12OX30-1/4, 1530 lbs. Units come standard with slotted shelves with 3 adjustable dividers per shelf.	\$6,631.44
SYSL-D	LETTER SIZE CABINETS - SLOTTED SHELF DIVIDER	SLOTTED SHELF DIVIDER, 7X11/16X10-1/2, 2 lbs	\$6.35
SYGD81-LTR-7	LETTER SIZE CABINETS - LETTER SIZE W/DEDICATED DRAWERS & SHELVES - 81"	81" GT, 14" FIXED, 7 TIER, 7 SHELVES, 4 DRAWERS, 81X12OX30-1/4, 1500 lbs. Units come standard with slotted shelves with 3 adjustable dividers per shelf.	\$6,416.52
SYGD90-LTR-8	LETTER SIZE CABINETS - LETTER SIZE W/DEDICATED DRAWERS & SHELVES - 90"	90" GT, 14" FIXED, 8 TIER, 8 SHELVES, 4 DRAWERS, 90X12OX30-1/4, 1600 lbs. Units come standard with slotted shelves with 3 adjustable dividers per shelf.	\$6,826.40



Our multimedia storage systems include high-density multimedia storage cabinets that are modular and flexible to meet your changing needs. GemTrac is a patented system, consisting of two large pull-out drawers. The cabinets are arranged with the drawers facing each other and supported on overhead tracks. This unique system provides extremely high capacity and requires no floor preparation. Installations are quick with minimum down-time. The GemTrac units can be double stacked.

GemTrac Panels

ITEMID	ITEMNAME	ITEMDESCRIPTION	SYSTEC/GSA PRICE
SYGBP-8130	EXTERIOR PANELS FOR GEMTRAC FILING CABINETS - 81X30" BACK PANELS	For Media Gemtrac and File Gemtrac. One set of end panels = one top panel and one bottom panel. One set of back panels = one top panel and one bottom panel. For 30-1/4" wide LETTER units. 81X30" BACK PANEL SET, 81X30X1/2, 31 lbs	\$162.32
SYGBP-8132	EXTERIOR PANELS FOR GEMTRAC FILING CABINETS - 81X32" BACK PANELS	For Media Gemtrac and File Gemtrac. One set of end panels = one top panel and one bottom panel. One set of back panels = one top panel and one bottom panel. For 32-1/4" wide A4 units. 81X32" BACK PANEL SET, 81X32X1/2, 31 lbs	\$162.32
SYGBP-9032	EXTERIOR PANELS FOR GEMTRAC FILING CABINETS - 90X32" BACK PANELS	For Media Gemtrac and File Gemtrac. One set of end panels = one top panel and one bottom panel. One set of back panels = one top panel and one bottom panel. For 32-1/4" wide A4 units. 90X32" BACK PANEL SET, 90X32X1/2, 34 lbs	\$162.32

Media GemTrac

ITEMID	ITEMNAME	ITEMDESCRIPTION	SYSTEC/GSA PRICE
SYSX81-7-12B	A/V SHELVING	81" open shelving unit for CD/DVD storage. Capacity of 1,032 CD/DVD's in jewel cases, 81"H x 37-3/4"W x 7-1/4"D	\$896.83
SYST7-3X2	SLIDETRAC BASE - 3X2	3 x 2 Slidetrac Base for 7" Shelving. Units will accommodate 5 shelving units, 6-1/2"H x 117"W x 15-1/2"D	\$1,441.81
SYGT81-6-12	A/V GEMTRAC	81" GemTrac unit with 10 drawers for CD/DVD storage. Capacity of 10,320 CD/DVD's in jewel cases, 81"H x 120"W x 32-1/4"D	\$10,701.16
SYLOCK	LOCK F/ABOVE	Gang option lock for GemTrac products to ensure the security of your media products.	\$340.00
SYGSP-81	SIDE PANELS F/GEMTRAC	81" side panel set for GemTrac, 81" H X 39"W X 1/2" D - 32lbs	\$162.32
SYGBP-8132	BACK PANELS F/GEMTRAC	81" X 32" back panel set for GemTrac, 81" H X 32" W X 1/2" D -31lbs	\$162.32

MEDIA STORAGE

GemTrac



Finding enough multimedia storage space to house a growing tape or media collection can be a challenge for any library, media or data center.

MediaStor multimedia storage cabinets are specifically designed to house large volumes of multimedia products. These multimedia storage cabinets and multimedia storage systems provide maximum use of space within a small footprint and improve organization and efficiency.

MEDIA STORAGE

Roll Film / Fiche Cabinets

Roll Film Cabinets

ITEMID	ITEMNAME	ITEMDESCRIPTION	SYSTEC/GSA PRICE
SYR-6	ROLL FILM CABINETS - VERTICAL - 6 DRAWER	Maximum form size: 4" high x 4-1/8" wide. SHORT VERTICAL, 6 DRAWER, 28-7/8X25X28-5/8, 235 lbs	\$1,644.94
SYR-8	ROLL FILM CABINETS - VERTICAL - 8 DRAWER	Maximum form size: 4" high x 4-1/8" wide. MEDIUM VERTICAL, 8 DRAWER, 39-3/4X25X28-5/8, 315 lbs	\$1,958.69
SYR-11	ROLL FILM CABINETS - VERTICAL - 11 DRAWER	Maximum form size: 4" high x 4-1/8" wide. TALL VERTICAL, 11 DRAWER, 51-5/8X25X28-5/8, 400 lbs	\$2,421.16
SYR-12	ROLL FILM CABINETS - VERTICAL - 12 DRAWER	Maximum form size: 4" high x 4-1/8" wide. TALL VERTICAL, 12 DRAWER, 56X25X28-5/8, 425 lbs	\$2,568.97
SYRO-5	ROLL FILM CABINETS - VERTICAL - 5 DRAWER	Maximum form size: 4" high x 4-1/8" wide. OVERFILE, 5 DRAWER, 34X25X28-5/8, 315 lbs	\$2,020.35
SYRL-6	ROLL FILM CABINETS - LATERAL - 6 DRAWER	SHORT LATERAL, 6 DRAWER, 28-7/8X43-1/8X18-1/4, 235 lbs	\$1,792.75
SYRL-8	ROLL FILM CABINETS - LATERAL - 8 DRAWER	MEDIUM LATERAL, 8 DRAWER, 39-3/4X43-1/8X18-1/4, 305 lbs	\$2,153.65
SYRL-12	ROLL FILM CABINETS - LATERAL - 12 DRAWER	TALL LATERAL, 12 DRAWER, 56X43-1/8X18-1/4, 425 lbs	\$2,859.14
SYRXL-6	ROLL FILM CABINETS - EXTRA DEEP LATERAL - 6 DRAWER	SHORT EXTRA DEEP LATERAL, 6 DRAWER, 28-7/8X43-1/8X22-1/2, 285 lbs	\$1,937.83
SYRXL-8	ROLL FILM CABINETS - EXTRA DEEP LATERAL - 8 DRAWER	MEDIUM EXTRA DEEP LATERAL, 8 DRAWER, 39-3/4X43-1/8X22-1/2, 365 lbs	\$2,342.27
SYRXL-12	ROLL FILM CABINETS - EXTRA DEEP LATERAL - 12 DRAWER	TALL EXTRA DEEP LATERAL, 12 DRAWER, 56X43-1/8X22-1/2, 510 lbs	\$3,133.00

Fiche Cabinets

ITEMID	ITEMNAME	ITEMDESCRIPTION	SYSTEC/GSA PRICE
SYCP-1	FICHE CABINETS - VERTICAL - EXTRA CONTROL PLATE	EXTRA CONTROL PLATE, 3X6X1/16	\$2.72
SYFL-5	FICHE CABINETS - LATERAL - 5 DRAWER	Capacity based on 5 mil fiche at 160/inch working density. SHORT LATERAL, 5 DRAWER, 28-7/8X43-1/8X18-1/4, 210 lbs	\$1,642.22
SYFL-7	FICHE CABINETS - LATERAL - 7 DRAWER	Capacity based on 5 mil fiche at 160/inch working density. MEDIUM LATERAL, 7 DRAWER, 39-3/4X43-1/8X18-1/4, 290 lbs	\$2,011.28
SYFL-10	FICHE CABINETS - LATERAL - 10 DRAWER	Capacity based on 5 mil fiche at 160/inch working density. TALL LATERAL, 10 DRAWER, 30 control plates per drawer standard. May substitute 6 mechanical compressors as no charge option. 56X43-1/8X18-1/4, 375 lbs	\$2,557.18
SYTR-FL	FICHE CABINETS - LATERAL - STEEL FICHE TRAY	STEEL FICHE TRAY, 3-3/4X6-1/2X16	\$54.41

Tape Cassettes Cabinets

ITEMID	ITEMNAME	ITEMDESCRIPTION	SYSTEC.GSA PRICE
SYCS30-6-4	TAPE CASSETTE CABINETS - 6" DRAWER - SHORT 30W	Accommodates DLT, LTO, BETA small, VHS, D2 small. No dividers in bonus drawer and not included in capacity calculation. SHORT, 30W, 26-3/4X30X24, 4 drawers, 4 dividers per drawer, 160 lbs	\$1,445.44
SYCS48-6-8	TAPE CASSETTE CABINETS - 6" DRAWER - SHORT 48W	Accommodates DLT, LTO, BETA small, VHS, D2 small. No dividers in bonus drawer and not included in capacity calculation. SHORT, 48W, 26-3/4X48X24, 4 drawers, 8 dividers per drawer, 240 lbs	\$1,735.62
SYCM30-6-4	TAPE CASSETTE CABINETS - 6" DRAWER - MEDIUM 30W	Accommodates DLT, LTO, BETA small, VHS, D2 small. No dividers in bonus drawer and not included in capacity calculation. MED, 30W, WITH 4" BONUS DRAWER, 42-3/4X30X24, 4 drawers, 4 dividers per drawer, 255 lbs	\$1,957.78
SYCM48-6-8	TAPE CASSETTE CABINETS - 6" DRAWER - MEDIUM 48W	Accommodates DLT, LTO, BETA small, VHS, D2 small. No dividers in bonus drawer and not included in capacity calculation. MEDIUM, 48W, WITH 4" BONUS DRAWER, 42-3/4X48X24, 6 drawers, 8 dividers per drawer, 370 lbs	\$2,399.40
SYCT30-6-4	TAPE CASSETTE CABINETS - 6" DRAWER - TALL 30W	Accommodates DLT, LTO, BETA small, VHS, D2 small. No dividers in bonus drawer and not included in capacity calculation. TALL, 30W, WITH 2" FILLER DRAWER, 58-3/4X30X24, 9 drawers, 4 dividers per drawer, 330 lbs	\$2,381.26
SYCT48-6-8	TAPE CASSETTE CABINETS - 6" DRAWER - TALL 48W	Accommodates DLT, LTO, BETA small, VHS, D2 small. No dividers in bonus drawer and not included in capacity calculation. TALL, 48W, WITH 2" FILLER DRAWER, 58X3/4X48X24, 9 drawers, 8 dividers per drawer, 475 lbs	\$2,962.52
SYD30-6-4	TAPE CASSETTE CABINETS - 6X30" DRAWER ONLY	Accommodates DLT, LTO, BETA small, VHS, D2 small. No dividers in bonus drawer and not included in capacity calculation. 6"HX30 DRAWER ONLY, 5.31X26.25X22.125, 4 dividers per drawer, 31 lbs	\$175.92
SYD48-6-8	TAPE CASSETTE CABINETS - 6X48" DRAWER ONLY	Accommodates DLT, LTO, BETA small, VHS, D2 small. No dividers in bonus drawer and not included in capacity calculation. 6"HX48 DRAWER ONLY, 5.31X44.25X22.125, 8 dividers per drawer, 41 lbs	\$230.33
SYBE-5X5	TAPE CASSETTE CABINETS - 5" BOOKEND	5" BOOKEND, 4-3/4X4-3/4X2-1/4	\$8.16
SYDR30-DLT	TAPE CASSETTE CABINETS - CAPACITIES WITH MEDIA RACKS - 30" DLT	30" cabinets. Order cabinet separately without dividers and racks. DLT, SLOT SIZE: 1.28 X 4.50. CAPACITY: 45 per row, 75 per drawer, 300 for short, 450 for medium, 675 for tall.	\$43.53
SYDR30-LTO	TAPE CASSETTE CABINETS - CAPACITIES WITH MEDIA RACKS - 30" LTO	30" cabinets. Order cabinet separately without dividers and racks. LTO, SLOT SIZE: 1.17 X 4.56. CAPACITY: 45 per row, 90 per drawer, 360 for short, 540 for medium, 810 for tall.	\$43.53
SYDR30-3480	TAPE CASSETTE CABINETS - CAPACITIES WITH MEDIA RACKS - 30" 3480/3490	30" cabinets. Order cabinet separately without dividers and racks. 3480 / 3490, SLOT SIZE: 1.01 X 4.32. CAPACITY: 45 per row, 95 per drawer, 380 for short, 570 for medium, 855 for tall.	\$43.53
SYDR48-DLT	TAPE CASSETTE CABINETS - CAPACITIES WITH MEDIA RACKS - 48" DLT	48" cabinets. Order cabinet separately without dividers and racks. DLT, SLOT SIZE: 1.28 X 4.50. CAPACITY: 90 per row, 120 per drawer, 480 for short, 720 for medium, 1080 for tall.	\$87.05
SYDR48-LTO	TAPE CASSETTE CABINETS - CAPACITIES WITH MEDIA RACKS - 48" LTO	48" cabinets. Order cabinet separately without dividers and racks. LTO, SLOT SIZE: 1.17 X 4.56. CAPACITY: 90 per row, 144 per drawer, 576 for short, 864 for medium, 1296 for tall.	\$87.05
SYDR48-3480	TAPE CASSETTE CABINETS - CAPACITIES WITH MEDIA RACKS - 48" 3480/3490	48" cabinets. Order cabinet separately without dividers and racks. 3480 / 3490, SLOT SIZE: 1.01 X 4.32. CAPACITY: 90 per row, 175 per drawer, 700 for short, 1070 for medium, 1575 for tall.	\$87.05

Tape and Disc Cabinets

ITEMID	ITEMNAME	ITEMDESCRIPTION	SYSTEC.GSA PRICE
SYCS30-7-4	TAPE AND DISC CABINETS - 7" DRAWER - SHORT 30W	Accommodates CD/DVD, DVD album, 5.5MO sleeve. No dividers in bonus drawer and not included in capacity calculation. SHORT, 30W, WBONUS 3" FILLER DRAWER, 26-3/4X30X24, 3 drawers, 4 dividers per drawer, 145 lbs	\$1,324.84
SYCS48-7-8	TAPE AND DISC CABINETS - 7" DRAWER - SHORT 48W	Accommodates CD/DVD, DVD album, 5.5MO sleeve. No dividers in bonus drawer and not included in capacity calculation. SHORT, 48W, WBONUS 3" FILLER DRAWER, 26-3/4X48X24, 3 drawers, 8 dividers per drawer, 200 lbs	\$1,568.77
SYCM30-7-4	TAPE AND DISC CABINETS - 7" DRAWER - MEDIUM 30W	Accommodates CD/DVD, DVD album, 5.5MO sleeve. No dividers in bonus drawer and not included in capacity calculation. MEDIUM, 30W, WBONUS 5" DRAWER, 42-3/4X30X24, 5 drawers, 4 dividers per drawer, 230 lbs	\$1,824.48
SYCM48-7-8	TAPE AND DISC CABINETS - 7" DRAWER - MEDIUM 48W	Accommodates CD/DVD, DVD album, 5.5MO sleeve. No dividers in bonus drawer and not included in capacity calculation. MEDIUM, 48W, WBONUS 5" DRAWER, 42-3/4X48X24, 5 drawers, 8 dividers per drawer, 315 lbs	\$2,209.87
SYCT30-7-4	TAPE AND DISC CABINETS - 7" DRAWER - TALL 30W	Accommodates CD/DVD, DVD album, 5.5MO sleeve. TALL, 30W, 58-3/4X30X24, 8 drawers, 4 dividers per drawer, 325 lbs	\$2,234.36

MEDIA STORAGE

Tape Cassette and Disc Cabinets



MEDIA STORAGE

Tape and Disc / Microfilm / Data Media

Tape and Disc Cabinets

ITEMID	ITEMNAME	ITEMDESCRIPTION	SYSTEC/GSA PRICE
SYCT48-7-8	TAPE AND DISC CABINETS - 7" DRAWER - TALL 48W	Accommodates CD/DVD, DVD album, 5.5MO sleeve. TALL, 48W, 58-3/4X48X24, 8 drawers, 8 dividers per drawer, 435 lbs	\$2,743.07
SY-L	TAPE AND DISC CABINETS - OPTIONAL TURN KEY LOCK	OPTIONAL TURN KEY LOCK	\$70.73
SYD30-7-4	TAPE AND DISC CABINETS - 7X30" DRAWER ONLY	Accommodates CD/DVD, DVD album, 5.5MO sleeve. 7"HX30 DRAWER ONLY, 6.31X26.25X22.125, 4 dividers per drawer, 31 lbs	\$183.17
SYD48-7-8	TAPE AND DISC CABINETS - 7X48" DRAWER ONLY	Accommodates CD/DVD, DVD album, 5.5MO sleeve. 7"HX48 DRAWER ONLY, 6.31X44.25X22.125, 8 dividers per drawer, 41 lbs	\$235.77
SYSLD-22	TAPE AND DISC CABINETS - SLIDE-N-LOCK DRAWER DIVIDER	SLIDE-N-LOCK DRAWER DIVIDER, 2X3/16X22	\$3.63
SYBE-6X6	TAPE AND DISC CABINETS - 6" BOOKEND	6" BOOKEND, 5-3/4X5-3/4X2-1/4	\$8.16
SYBE-CD	TAPE AND DISC CABINETS - HINGED BOOKEND FOR CD's	HINGED BOOKEND FOR CD'S, 3-3/4X4X2-1/4	\$10.88

Microfilm Cabinets

ITEMID	ITEMNAME	ITEMDESCRIPTION	SYSTEC/GSA PRICE
SYGD81-ROLL-PC	MICROFILM CABINETS - DEDICATED 12 DRAWER - 81" ROLLFILM - 16mm & 35mm	16mm & 35mm Rollfilm with plastic compressor and fixed shelves. The Rollfilm Gemtrac has special drawers that CANNOT be intermixed with other Gemtrac Drawers. These models replace the old number GR-81-PC & GR-90-PC. The main difference is the aisle width: old aisle width is 43-1/2", new aisle width is 42". 81" ROLLFILM, 35mm capacity is 3780, 16mm capacity is 6300, 81X120X30-1/4, 1830 lbs	\$11,562.62
SYGD90-ROLL-PC	MICROFILM CABINETS - DEDICATED 12 DRAWER - 90" ROLLFILM - 16mm & 35mm	16mm & 35mm Rollfilm with plastic compressor and fixed shelves. The Rollfilm Gemtrac has special drawers that CANNOT be intermixed with other Gemtrac Drawers. These models replace the old number GR-81-PC & GR-90-PC. The main difference is the aisle width: old aisle width is 43-1/2", new aisle width is 42". 90" ROLLFILM, 35mm capacity is 4284, 16mm capacity is 7140, 90X120X30-1/4, 1950 lbs	\$12,328.87
SYGD81-ROLL-D	MICROFILM CABINETS - DEDICATED 12 DRAWER - 81" ROLLFILM - 16mm	16mm Rollfilm with aluminum dividers and fixed shelves. These models replace the old number GR-81-D & GR-90-D. The main difference is the aisle width: old aisle width is 43-1/2", new aisle width is 42". 81" ROLLFILM, capacity is 5940, 81X120X30-1/4, 1925 lbs	\$12,919.19
SYGD90-ROLL-D	MICROFILM CABINETS - DEDICATED 12 DRAWER - 90" ROLLFILM - 16mm	16mm Rollfilm with aluminum dividers and fixed shelves. These models replace the old number GR-81-D & GR-90-D. The main difference is the aisle width: old aisle width is 43-1/2", new aisle width is 42". 90" ROLLFILM, capacity 6732, 90X120X30-1/4, 2085 lbs	\$13,866.80
SYGSP-81	MICROFILM CABINET OPTIONS - 81" SIDE PANEL	81" SIDE PANEL SET, 81X39X1/2, 32 lbs	\$162.32
SYGSP-90	MICROFILM CABINET OPTIONS - 90" SIDE PANEL	90" SIDE PANEL SET, 90X39X1/2, 35 lbs	\$162.32

Data Media Cabinets

ITEMID	ITEMNAME	ITEMDESCRIPTION	SYSTEC/GSA PRICE
SYGT81-5.5F-15-31	DATA MEDIA CABINETS - 10 DRAWER - 5.5" DRAWERS - 81" 3480	Preconfigured 3480 (& DLT no box) with flat shelves & 31 slot wire rack. When using the "Flat Shelf", one extra shelf is required to hold top wire. 81" 3480, 81X120X30-1/4, 10 drawers, 15 shelves, capacity of 4340, 2100 lbs	\$12,273.55
SYDR81-5.5F-15-31	DATA MEDIA CABINETS - 10 DRAWER - 5.5" DRAWERS - 81" 3480 - DRAWER ONLY	81" 3480 DRAWER ONLY, 81X39X5-1/2, capacity of 434, 150 lbs	\$990.23
SYGTW5.5F-17-31	DATA MEDIA CABINETS - 10 DRAWER - 5.5" DRAWERS - 90" 3480	Preconfigured 3480 (& DLT no box) with flat shelves & 31 slot wire rack. When using the "Flat Shelf", one extra shelf is required to hold top wire. 90" 3480, 90X120X30-1/4, 10 drawers, 17 shelves, capacity of 4960, 2260 lbs	\$13,231.13
SYDR90-5.5F-17-31	DATA MEDIA CABINETS - 10 DRAWER - 5.5" DRAWERS - 90" 3480 - DRAWER ONLY	90" 3480 DRAWER ONLY, 90X39X5-1/2, capacity of 496, 165 lbs	\$1,076.37
SYS-5.5F-31	DATA MEDIA CABINETS - 10 DRAWER - 5.5" FLAT SHELF WRACK	5.5" FLAT SHELF W/ RACK, 1/2X35-1/2X3-5/8, capacity of 31	\$35.37
SYGT81-5.5F-15-25	DATA MEDIA CABINETS - 10 DRAWER - 5.5" DRAWERS - 81" DLT	DLT with flat shelves & 21 slot wire rack. One extra shelf required to hold top wire rack. 81" DLT, 81X12X30-1/4, 10 drawers, 15 shelves, capacity of 3500, 2100 lbs	\$12,273.55
SYDR81-5.5F-15-25	DATA MEDIA CABINETS - 10 DRAWER - 5.5" DRAWERS - 81" DLT - DRAWER ONLY	81" DLT DRAWER ONLY, 81X39X5-1/2, capacity of 350, 150 lbs	\$990.23
SYGTW5.5F-17-25	DATA MEDIA CABINETS - 10 DRAWER - 5.5" DRAWERS - 90" DLT	DLT with flat shelves & 21 slot wire rack. One extra shelf required to hold top wire rack. 90" DLT, 90X120X30-1/4, 10 drawers, 17 shelves, capacity of 4000, 2260 lbs	\$13,231.13

Data Media Cabinets

ITEMID	ITEMNAME	ITEMDESCRIPTION	SYSTEC/GSA PRICE
SYDR90-5.5F-17-25	DATA MEDIA CABINETS - 10 DRAWER - 5.5" DRAWERS - 90" DLT - DRAWER ONLY	90" DLT DRAWER ONLY, 90X39X5-1/2, capacity of 400, 165 lbs	\$1,076.37
S-5.5F-25	DATA MEDIA CABINETS - 10 DRAWER - 5.5" FLAT SHELF W/RACK	5.5" FLAT SHELF W/ RACK, 1/2X35-1/2X3-5/8, capacity of 25	\$35.37
SYGT81-5.5F-14-29	DATA MEDIA CABINETS - 10 DRAWER - 5.5" DRAWERS - 81" LTO	LTO with flat shelves & 29 slot wire rack. One extra shelf required to hold top wire rack. 81" LTO, 81X12OX30-1/4, 10 drawers, 14 shelves, capacity of 3770, 2050 lbs	\$11,928.97
SYDR81-5.5F-14-29	DATA MEDIA CABINETS - 10 DRAWER - 5.5" DRAWERS - 81" LTO - DRAWER ONLY	81" LTO DRAWER ONLY, 81X39X5-1/2, capacity of 377, 145 lbs	\$956.68
SYGTW5.5F-15-29	DATA MEDIA CABINETS - 10 DRAWER - 5.5" DRAWERS - 90" LTO	LTO with flat shelves & 29 slot wire rack. One extra shelf required to hold top wire rack. 90" LTO, 90X12OX30-1/4, 10 drawers, 15 shelves, capacity of 4060, 2210 lbs	\$12,541.96
SYDR90-5.5F-15-29	DATA MEDIA CABINETS - 10 DRAWER - 5.5" DRAWERS - 90" LTO - DRAWER ONLY	90" LTO DRAWER ONLY, 90X39X5-1/2, capacity of 406, 160 lbs	\$1,006.55
S-5.5F-29	DATA MEDIA CABINETS - 10 DRAWER - 5.5" FLAT SHELF W/RACK	5.5" FLAT SHELF W/ RACK, 1/2X35-1/2X3-5/8, capacity of 29	\$35.37
SY-GL	DATA MEDIA CABINETS - OPTIONAL GANG LOCK	OPTIONAL GANG LOCK	\$340.05
SYGBP-9030	DATA MEDIA CABINETS - 90X30" BACK PANEL SET	90X30" BACK PANEL SET, 90X30-1/2X33	\$162.32
SYGT81-5.5R-17B-47	DATA MEDIA CABINETS - 10 DRAWER - 5.5" DRAWERS - 81" 4mm	Preconfigured 4mm with recessed shelves, 47 slot wire rack & backstops. 81" 4mm, 81X12OX30-1/4, 10 drawers, 17 shelves, capacity of 7990, 2550 lbs	\$14,974.91
SYDR81-5.5R-17B-47	DATA MEDIA CABINETS - 10 DRAWER - 5.5" DRAWERS - 81" 4mm - DRAWER ONLY	81" 4MM DRAWER ONLY, 81X39X5-1/2, capacity of 799, 195 lbs	\$1,261.36
SYGT90-5.5R-20B-47	DATA MEDIA CABINETS - 10 DRAWER - 5.5" DRAWERS - 90" 4mm	Preconfigured 4mm with recessed shelves, 47 slot wire rack & backstops. 90" 4mm, 90X12OX30-1/4, 10 drawers, 20 shelves, capacity of 9400, 2760 lbs	\$16,633.45
SYDR90-5.5R-20B-47	DATA MEDIA CABINETS - 10 DRAWER - 5.5" DRAWERS - 90" 4mm - DRAWER ONLY	90" 4mm DRAWER ONLY, 90X39X5-1/2, capacity of 940, 215 lbs	\$1,416.42
SYGT81-5.5R-14B-36	DATA MEDIA CABINETS - 10 DRAWER - 5.5" DRAWERS - 81" 8mm	Preconfigured 8mm with recessed shelves, 36 slot wire rack & backstops. 81" 8mm, 81X 12OX30-1/4, 10 drawers, 14 shelves, capacity of 5040, 2350 lbs	\$13,586.60
SYDR81-5.5R-14B-36	DATA MEDIA CABINETS - 10 DRAWER - 5.5" DRAWERS - 81" 8mm - DRAWER ONLY	81" 8mm DRAWER ONLY, 81X39X5-1/2, capacity of 504, 175 lbs	\$1,122.62
SYGT90-5.5R-16B-36	DATA MEDIA CABINETS - 10 DRAWER - 5.5" DRAWERS - 90" 8mm	Preconfigured 8mm with recessed shelves, 36 slot wire rack & backstops. 90" 8mm, 90X12OX30-1/4, 10 drawers, 16 shelves, capacity of 5760, 2560 lbs	\$14,781.76
SYDR90-5.5R-16B-36	DATA MEDIA CABINETS - 10 DRAWER - 5.5" DRAWERS - 90" 8mm - DRAWER ONLY	90" 8mm DRAWER ONLY, 90X39X5-1/2, capacity of 576, 195 lbs	\$1,230.53
SYS-5.5R-B-36	DATA MEDIA CABINETS - 10 DRAWER - 5.5" R SHELF W/RACK AND BACKSTOP	5.5R SHELF WITH RACK AND BACKSTOP, 1/2X35-3/8X5, capacity of 36	\$46.25
STGT81-5.5R-14-31	DATA MEDIA CABINETS - 10 DRAWER - 5.5" DRAWERS - 81" 3480	Preconfigured 3480 (& DLT no box) with recessed shelves, 31 slot wire rack & no backstops. 81" 3480, 81X12OX30-1/4, 10 drawers, 14 shelves, capacity of 4340, 2200 lbs	\$12,832.14
SYDR81-5.5R-14-31	DATA MEDIA CABINETS - 10 DRAWER - 5.5" DRAWERS - 81" 3480 - DRAWER ONLY	81" 2480 DRAWER ONLY, 81X39X5-1/2, capacity of 434, 160 lbs	\$1,047.36
SYGT90-5.5R-16-31	DATA MEDIA CABINETS - 10 DRAWER - 5.5" DRAWERS - 90" 3480	Preconfigured 3480 (& DLT no box) with recessed shelves, 31 slot wire rack & no backstops. 90" 3480, 90X12OX30-1/4, 10 drawers, 16 shelves, capacity of 4960, 2410 lbs	\$13,920.30
SYDR90 5.5R-16-31	DATA MEDIA CABINETS - 10 DRAWER - 5.5" DRAWERS - 90" 3480 - DRAWER ONLY	90" 3480 DRAWER ONLY, 90X39X5-1/2, capacity of 496, 180 lbs	\$1,145.29
SYS-5.5R-31	DATA MEDIA CABINETS - 10 DRAWER - 5.5" RECESSED SHELF W/RACK	5.5" RECESSED SHELF W/ RACK, 1/2X35-3/8X5, capacity of 31	\$41.71
SYGT81-5.5R-14-25	DATA MEDIA CABINETS - 10 DRAWER - 5.5" DRAWERS - 81" DLT	Preconfigured DLT with recessed shelves, 25 slot wire rack & no backstops. 81" DLT, 81X12OX30-1/4, 10 drawers, 14 shelves, capacity of 3500, 2200 lbs	\$12,832.14
SYDR81-5.5R-14-25	DATA MEDIA CABINETS - 10 DRAWER - 5.5" DRAWERS - 81" DLT - DRAWER ONLY	81" DLT DRAWER ONLY, 81X39X5-1/2, capacity of 350, 160 lbs	\$1,047.36
SYGT90-5.5R-16-25	DATA MEDIA CABINETS - 10 DRAWER - 5.5" DRAWERS - 90" DLT	Preconfigured DLT with recessed shelves, 25 slot wire rack & no backstops. 90" DLT, 90X12OX30-1/4, 10 drawers, 16 shelves, capacity of 4000, 2410 lbs	\$13,920.30
SYDR90-5.5R-16-25	DATA MEDIA CABINETS - 10 DRAWER - 5.5" DRAWERS - 90" DLT - DRAWER ONLY	90" DLT DRAWER ONLY, 90X39X5-1/2, capacity of 400, 180 lbs	\$1,145.29
SYS-5.5R-25	DATA MEDIA CABINETS - 10 DRAWER - 5.5" RECESSED SHELF W/RACK	5.5" RECESSED SHELF W/ RACK, 1/2X35-3/8X5, capacity of 25	\$41.71
SYGT81-5.5R-13-29	DATA MEDIA CABINETS - 10 DRAWER - 5.5" DRAWERS - 81" LTO	Preconfigured LTO with recessed shelves, 29 slot wire rack & no backstops. 81" LTO, 81X12OX30-1/4, 10 drawers, 13 shelves, capacity of 3770, 2150 lbs	\$12,424.08
SYDR81-5.5R-13-29	DATA MEDIA CABINETS - 10 DRAWER - 5.5" DRAWERS - 81" LTO - DRAWER ONLY	81" LTO DRAWER ONLY, 81X39X5-1/2, capacity of 377, 155 lbs	\$1,005.64
SYGT90-5.5R-14-29	DATA MEDIA CABINETS - 10 DRAWER - 5.5" DRAWERS - 90" LTO	Preconfigured LTO with recessed shelves, 29 slot wire rack & no backstops. 90" LTO, 90X12OX30-1/4, 10 drawers, 14 shelves, capacity of 4060, 2360 lbs	\$13,101.46
SYDR90-5.5R-14-29	DATA MEDIA CABINETS - 10 DRAWER - 5.5" DRAWERS - 90" LTO - DRAWER ONLY	90" LTO DRAWER ONLY, 90X39X5-1/2, capacity of 406, 175 lbs	\$1,062.77
SYS-5.5R-29	DATA MEDIA CABINETS - 10 DRAWER - 5.5" RECESSED SHELF W/RACK	5.5" RECESSED SHELF W/ RACK, 1/2X35-3/8X5, capacity of 29	\$41.71

MEDIA STORAGE

Data Media



Vertical and lateral file cabinets are offered in a range of sizes and styles to meet your storage requirements. Front-to-back or side-to-side filing, cabinet storage, bookcase storage or a combination provides complete versatility. Flexible drawer layouts, shelf dividers and reference shelves enhance the ease of use. All file cabinets are classified for fire safety, providing the best level of protection for vital business information.

FILE CABINETS

Water Resistant / Insulated

Water-Resistant Series

ITEMID	ITEMNAME	ITEMDESCRIPTION	SYSTEC/GSA PRICE
SYS2LTC-5000	SAFETEC STORAGE - 31" FILE CABINETS - FIRE, WATER & IMPACT RESISTANT - 2 DRAWER LETTER	SafeTec Water-Resistant Series. 31" file cabinets - fire, water and impact resistant. 2 Drawer Letter	\$1,437.28
SYS3LTC-5000	SAFETEC STORAGE - 31" FILE CABINETS - FIRE, WATER & IMPACT RESISTANT - 3 DRAWER LETTER	SafeTec Water-Resistant Series. 31" file cabinets - fire, water and impact resistant. 3 Drawer Letter	\$2,039.55
SYS4LTC-5000	SAFETEC STORAGE - 31" FILE CABINETS - FIRE, WATER & IMPACT RESISTANT - 4 DRAWER LETTER	SafeTec Water-Resistant Series. 31" file cabinets - fire, water and impact resistant. 4 Drawer Letter	\$2,302.52
SYS2CTC-5000	SAFETEC STORAGE - 31" FILE CABINETS - FIRE, WATER & IMPACT RESISTANT - 2 DRAWER LEGAL	SafeTec Water-Resistant Series. 31" file cabinets - fire, water and impact resistant. 2 Drawer Legal	\$1,480.35
SYS3CTC-5000	SAFETEC STORAGE - 31" FILE CABINETS - FIRE, WATER & IMPACT RESISTANT - 3 DRAWER LEGAL	SafeTec Water-Resistant Series. 31" file cabinets - fire, water and impact resistant. 3 Drawer Legal	\$2,125.69
SYS4CTC-5000	SAFETEC STORAGE - 31" FILE CABINETS - FIRE, WATER & IMPACT RESISTANT - 4 DRAWER LEGAL	SafeTec Water-Resistant Series. 31" file cabinets - fire, water and impact resistant. 4 Drawer Legal	\$2,350.88
SYS2LTC-2500	SAFETEC STORAGE - 25" FILE CABINETS - FIRE, WATER & IMPACT RESISTANT - 2 DRAWER LETTER	SafeTec Water-Resistant Series. 25" file cabinets - fire, water and impact resistant. 2 Drawer Letter	\$1,220.40
SYS4LTC-2500	SAFETEC STORAGE - 25" FILE CABINETS - FIRE, WATER & IMPACT RESISTANT - 4 DRAWER LETTER	SafeTec Water-Resistant Series. 25" file cabinets - fire, water and impact resistant. 4 Drawer Letter	\$1,989.67
SYS2CTC-2500	SAFETEC STORAGE - 25" FILE CABINETS - FIRE, WATER & IMPACT RESISTANT - 2 DRAWER LEGAL	SafeTec Water-Resistant Series. 25" file cabinets - fire, water and impact resistant. 2 Drawer Legal	\$1,255.92
SYS4CTC-2500	SAFETEC STORAGE - 25" FILE CABINETS - FIRE, WATER & IMPACT RESISTANT - 4 DRAWER LEGAL	SafeTec Water-Resistant Series. 25" file cabinets - fire, water and impact resistant. 4 Drawer Legal	\$2,002.52

Vertical Insulated File Cabinets

ITEMID	ITEMNAME	ITEMDESCRIPTION	SYSTEC/GSA PRICE
SYS2LFD-5000	SAFETEC STORAGE - 31" VERTICAL INSULATED FILE CABINETS - 2 DRAWER LETTER - FIRE RESISTANT	SafeTec Insulated Files. 31" vertical insulated file cabinets. 2 Drawer Letter - fire resistant	\$1,286.15
SYS3LFD-5000	SAFETEC STORAGE - 31" VERTICAL INSULATED FILE CABINETS - 3 DRAWER LETTER - FIRE RESISTANT	SafeTec Insulated Files. 31" vertical insulated file cabinets. 3 Drawer Letter - fire resistant	\$1,685.89
SYS4LFD-5000	SAFETEC STORAGE - 31" VERTICAL INSULATED FILE CABINETS - 4 DRAWER LETTER - FIRE RESISTANT	SafeTec Insulated Files. 31" vertical insulated file cabinets. 4 Drawer Letter - fire resistant	\$1,958.69
SYS2LFC-5000	SAFETEC STORAGE - 31" VERTICAL INSULATED FILE CABINETS - 2 DRAWER LETTER - FIRE AND IMPACT RESISTANT	SafeTec Insulated Files. 31" vertical insulated file cabinets. 2 Drawer Letter - fire and impact resistant	\$1,321.66
SYS3LFC-5000	SAFETEC STORAGE - 31" VERTICAL INSULATED FILE CABINETS - 3 DRAWER LETTER - FIRE AND IMPACT RESISTANT	SafeTec Insulated Files. 31" vertical insulated file cabinets. 3 Drawer Letter - fire and impact resistant	\$1,855.92
SYS4LFC-5000	SAFETEC STORAGE - 31" VERTICAL INSULATED FILE CABINETS - 4 DRAWER LETTER - FIRE AND IMPACT RESISTANT	SafeTec Insulated Files. 31" vertical insulated file cabinets. 4 Drawer Letter - fire and impact resistant	\$2,025.19
SYS2CFD-5000	SAFETEC STORAGE - 31" VERTICAL INSULATED FILE CABINETS - 2 DRAWER LEGAL - FIRE RESISTANT	SafeTec Insulated Files. 31" vertical insulated file cabinets. 2 Drawer Legal - fire resistant	\$1,331.49
SYS3CFD-5000	SAFETEC STORAGE - 31" VERTICAL INSULATED FILE CABINETS - 3 DRAWER LEGAL - FIRE RESISTANT	SafeTec Insulated Files. 31" vertical insulated file cabinets. 3 Drawer Legal - fire resistant	\$1,790.18
SYS4CFD-5000	SAFETEC STORAGE - 31" VERTICAL INSULATED FILE CABINETS - 4 DRAWER LEGAL - FIRE RESISTANT	SafeTec Insulated Files. 31" vertical insulated file cabinets. 4 Drawer Legal - fire resistant	\$2,005.54

Vertical Insulated File Cabinets

ITEM ID	ITEM NAME	ITEM DESCRIPTION	SYSTEC/GSA PRICE
SYS2CFC-5000	SAFETEC STORAGE - 31" VERTICAL INSULATED FILE CABINETS - 2 DRAWER LEGAL - FIRE AND IMPACT RESISTANT	SafeTec Insulated Files. 31" vertical insulated file cabinets. 2 Drawer Legal - fire and impact resistant	\$1,367.76
SYS3CFC-5000	SAFETEC STORAGE - 31" VERTICAL INSULATED FILE CABINETS - 3 DRAWER LEGAL - FIRE AND IMPACT RESISTANT	SafeTec Insulated Files. 31" vertical insulated file cabinets. 3 Drawer Legal - fire and impact resistant	\$1,948.87
SYS4CFC-5000	SAFETEC STORAGE - 31" VERTICAL INSULATED FILE CABINETS - 4 DRAWER LEGAL - FIRE AND IMPACT RESISTANT	SafeTec Insulated Files. 31" vertical insulated file cabinets. 4 Drawer Legal - fire and impact resistant	\$2,077.33
SYS2LFD-2500	SAFETEC STORAGE - 25" VERTICAL INSULATED FILE CABINETS - 2 DRAWER LETTER - FIRE RESISTANT	SafeTec Insulated Files. 25" vertical insulated file cabinets. 2 Drawer Letter - fire resistant	\$1,065.49
SYS4LFD-2500	SAFETEC STORAGE - 25" VERTICAL INSULATED FILE CABINETS - 4 DRAWER LETTER - FIRE RESISTANT	SafeTec Insulated Files. 25" vertical insulated file cabinets. 4 Drawer Letter - fire resistant	\$1,583.12
SYS2LFC-2500	SAFETEC STORAGE - 25" VERTICAL INSULATED FILE CABINETS - 2 DRAWER LETTER - FIRE AND IMPACT RESISTANT	SafeTec Insulated Files. 25" vertical insulated file cabinets. 2 Drawer Letter - fire and impact resistant	\$1,086.65
SYS4LFC-2500	SAFETEC STORAGE - 25" VERTICAL INSULATED FILE CABINETS - 4 DRAWER LETTER - FIRE AND IMPACT RESISTANT	SafeTec Insulated Files. 25" vertical insulated file cabinets. 4 Drawer Letter - fire and impact resistant	\$1,687.41
SYS2CFD-2500	SAFETEC STORAGE - 25" VERTICAL INSULATED FILE CABINETS - 2 DRAWER LEGAL - FIRE RESISTANT	SafeTec Insulated Files. 25" vertical insulated file cabinets. 2 Drawer Legal - fire resistant	\$1,075.31
SYS4CFD-2500	SAFETEC STORAGE - 25" VERTICAL INSULATED FILE CABINETS - 4 DRAWER LEGAL - FIRE RESISTANT	SafeTec Insulated Files. 25" vertical insulated file cabinets. 4 Drawer Legal - fire resistant	\$1,625.44
SYS2CFC-2500	SAFETEC STORAGE - 25" VERTICAL INSULATED FILE CABINETS - 2 DRAWER LEGAL - FIRE AND IMPACT RESISTANT	SafeTec Insulated Files. 25" vertical insulated file cabinets. 2 Drawer Legal - fire and impact resistant	\$1,125.94
SYS4CFC-2500	SAFETEC STORAGE - 25" VERTICAL INSULATED FILE CABINETS - 4 DRAWER LEGAL - FIRE AND IMPACT RESISTANT	SafeTec Insulated Files. 25" vertical insulated file cabinets. 4 Drawer Legal - fire and impact resistant	\$1,701.01
SYS2LFC-2000	SAFETEC STORAGE - 20" INSULATED FILE CABINETS - 2 DRAWER LETTER - FIRE AND IMPACT RESISTANT	SafeTec Insulated Files. 20" insulated file cabinets. Classes 350 degree 1 hour ratig. 2 Drawer Letter - fire and impact resistance	\$596.98
SYS4LFC-2000	SAFETEC STORAGE - 20" INSULATED FILE CABINETS - 4 DRAWER LETTER - FIRE AND IMPACT RESISTANT	SafeTec Insulated Files. 20" insulated file cabinets. Classes 350 degree 1 hour ratig. 4 Drawer Letter - fire and impact resistance	\$1,048.11

Mixed Media Insulated File Cabinets

ITEM ID	ITEM NAME	ITEM DESCRIPTION	SYSTEC/GSA PRICE
SY2CC1	SAFETEC STORAGE - 31" MIXED MEDIA INSULATED FILE CABINETS - 2 DRAWER LEGAL (1 125 DEGREE, 1 350 DEGREE) - FIRE RESISTANT	SafeTec Insulated Files. 31" mixed media file cabinets, fire resistant. 2 Drawer Legal - 1 drawer of 125 degree 1 hour rating, 1 drawer of 350 degree 1 hour rating	\$2,706.05
SY3CC1	SAFETEC STORAGE - 31" MIXED MEDIA INSULATED FILE CABINETS - 3 DRAWER LEGAL (1 125 DEGREE, 2 350 DEGREE) - FIRE RESISTANT	SafeTec Insulated Files. 31" mixed media file cabinets, fire resistant. 3 Drawer Legal - 1 drawer of 125 degree 1 hour rating, 2 drawers of 350 degree 1 hour rating	\$3,285.64
SY3CC2	SAFETEC STORAGE - 31" MIXED MEDIA INSULATED FILE CABINETS - 3 DRAWER LEGAL (2 125 DEGREE, 1 350 DEGREE) - FIRE RESISTANT	SafeTec Insulated Files. 31" mixed media file cabinets, fire resistant. 3 Drawer Legal - 2 drawers of 125 degree 1 hour rating, 1 drawer of 350 degree 1 hour rating	\$4,778.09
SY4CC1	SAFETEC STORAGE - 31" MIXED MEDIA INSULATED FILE CABINETS - 4 DRAWER LEGAL (1 125 DEGREE, 3 350 DEGREE) - FIRE RESISTANT	SafeTec Insulated Files. 31" mixed media file cabinets, fire resistant. 4 Drawer Legal - 1 drawer of 125 degree 1 hour rating, 3 drawers of 350 degree 1 hour rating	\$3,673.30
SY4CC2	SAFETEC STORAGE - 31" MIXED MEDIA INSULATED FILE CABINETS - 4 DRAWER LEGAL (2 125 DEGREE, 2 350 DEGREE) - FIRE RESISTANT	SafeTec Insulated Files. 31" mixed media file cabinets, fire resistant. 4 Drawer Legal - 2 drawers of 125 degree 1 hour rating, 2 drawers of 350 degree 1 hour rating	\$5,100.00
SY4CC3	SAFETEC STORAGE - 31" MIXED MEDIA INSULATED FILE CABINETS - 4 DRAWER LEGAL (3 125 DEGREE, 1 350 DEGREE) - FIRE RESISTANT	SafeTec Insulated Files. 31" mixed media file cabinets, fire resistant. 4 Drawer Legal - 3 drawers of 125 degree 1 hour rating, 1 drawer of 350 degree 1 hour rating	\$6,606.05
SYS2C125	SAFETEC STORAGE - 25" INSULATED FILE CABINETS - LEGAL - FIRE RESISTANT	SafeTec Insulated Files. 25" insulated file cabinets. Legal - fire resistant	\$2,565.49

FILE CABINETS

Vertical Insulated / Mixed Media

Lateral Insulated File Cabinets

ITEM ID	ITEM NAME	ITEM DESCRIPTION	SYSTEC/GSA PRICE
SYS2HD435	SAFETEC STORAGE - 43" LATERAL INSULATED FILE CABINETS - 2 DRAWER - FIRE RESISTANT	SafeTec Insulated Files. 43" lateral insulated file cabinets. 2 Drawer 43" - fire resistant	\$2,270.78
SYS3HD435	SAFETEC STORAGE - 43" LATERAL INSULATED FILE CABINETS - 3 DRAWER - FIRE RESISTANT	SafeTec Insulated Files. 43" lateral insulated file cabinets. 3 Drawer 43" - fire resistant	\$3,156.42
SYS4HD435	SAFETEC STORAGE - 43" LATERAL INSULATED FILE CABINETS - 4 DRAWER - FIRE RESISTANT	SafeTec Insulated Files. 43" lateral insulated file cabinets. 4 Drawer 43" - fire resistant	\$3,818.39
SYS2HC435	SAFETEC STORAGE - 43" LATERAL INSULATED FILE CABINETS - 2 DRAWER - FIRE AND IMPACT RESISTANT	SafeTec Insulated Files. 43" lateral insulated file cabinets. 2 Drawer 43" - fire and impact resistant	\$2,381.11
SYS3HC435	SAFETEC STORAGE - 43" LATERAL INSULATED FILE CABINETS - 3 DRAWER - FIRE AND IMPACT RESISTANT	SafeTec Insulated Files. 43" lateral insulated file cabinets. 3 Drawer 43" - fire and impact resistant	\$3,316.62
SYS4HC435	SAFETEC STORAGE - 43" LATERAL INSULATED FILE CABINETS - 4 DRAWER - FIRE AND IMPACT RESISTANT	SafeTec Insulated Files. 43" lateral insulated file cabinets. 4 Drawer 43" - fire and impact resistant	\$3,909.82
SYS2HD3-5	SAFETEC STORAGE - 36" LATERAL INSULATED FILE CABINETS - 2 DRAWER - FIRE RESISTANT	SafeTec Insulated Files. 36" lateral insulated file cabinets. 2 Drawer 36" - fire resistant	\$2,097.73
SYS3HD365	SAFETEC STORAGE - 36" LATERAL INSULATED FILE CABINETS - 3 DRAWER - FIRE RESISTANT	SafeTec Insulated Files. 36" lateral insulated file cabinets. 3 Drawer 36" - fire resistant	\$2,769.52
SYS4HD365	SAFETEC STORAGE - 36" LATERAL INSULATED FILE CABINETS - 4 DRAWER - FIRE RESISTANT	SafeTec Insulated Files. 36" lateral insulated file cabinets. 4 Drawer 36" - fire resistant	\$3,163.98
SYS2HC365	SAFETEC STORAGE - 36" LATERAL INSULATED FILE CABINETS - 2 DRAWER - FIRE AND IMPACT RESISTANT	SafeTec Insulated Files. 36" lateral insulated file cabinets. 2 Drawer 36" - fire and impact resistant	\$2,183.88
SYS3HC365	SAFETEC STORAGE - 36" LATERAL INSULATED FILE CABINETS - 3 DRAWER - FIRE AND IMPACT RESISTANT	SafeTec Insulated Files. 36" lateral insulated file cabinets. 3 Drawer 36" - fire and impact resistant	\$2,906.30
SYS4HC365	SAFETEC STORAGE - 36" LATERAL INSULATED FILE CABINETS - 4 DRAWER - FIRE AND IMPACT RESISTANT	SafeTec Insulated Files. 36" lateral insulated file cabinets. 4 Drawer 36" - fire and impact resistant	\$3,231.23
SYS2HC305	SAFETEC STORAGE - 30" LATERAL INSULATED FILE CABINETS - 2 DRAWER - FIRE AND IMPACT RESISTANT	SafeTec Insulated Files. 30" lateral insulated file cabinets. 2 Drawer 30" - fire and impact resistant	\$2,611.28
SYS3HC305	SAFETEC STORAGE - 30" LATERAL INSULATED FILE CABINETS - 3 DRAWER - FIRE AND IMPACT RESISTANT	SafeTec Insulated Files. 30" lateral insulated file cabinets. 3 Drawer 30" - fire and impact resistant	\$3,541.69
SYS4HC305	SAFETEC STORAGE - 30" LATERAL INSULATED FILE CABINETS - 4 DRAWER - FIRE AND IMPACT RESISTANT	SafeTec Insulated Files. 30" lateral insulated file cabinets. 4 Drawer 30" - fire and impact resistant	\$3,873.84

Side Tab Filing Cabinets

ITEM ID	ITEM NAME	ITEM DESCRIPTION	SYSTEC/GSA PRICE
SYS1HD43ST	SAFETEC STORAGE - 43" SIDE TAB FILING CABINETS - 1 SIDE TAB UNIT	SafeTec Insulated Files. 43" side tab filing cabinets - class 350 degree 1 hour rating, H.I.P.A.A. compliant. 1 Side Tab Unit 43"	\$1,026.95
SYS1HD43+1	SAFETEC STORAGE - 43" SIDE TAB FILING CABINETS - 2 SIDE TAB UNITS, ASSEMBLED	SafeTec Insulated Files. 43" side tab filing cabinets - class 350 degree 1 hour rating, H.I.P.A.A. compliant. 2 Side Tab Units, Assembled, 43"	\$2,053.15
SYS1HD43+2	SAFETEC STORAGE - 43" SIDE TAB FILING CABINETS - 3 SIDE TAB UNITS, ASSEMBLED	SafeTec Insulated Files. 43" side tab filing cabinets - class 350 degree 1 hour rating, H.I.P.A.A. compliant. 3 Side Tab Units, Assembled, 43"	\$3,080.86
SYS1HD43+3	SAFETEC STORAGE - 43" SIDE TAB FILING CABINETS - 4 SIDE TAB UNITS, ASSEMBLED	SafeTec Insulated Files. 43" side tab filing cabinets - class 350 degree 1 hour rating, H.I.P.A.A. compliant. 4 Side Tab Units, Assembled, 43"	\$4,107.81
SYS2HD43ST	SAFETEC STORAGE - 43" SIDE TAB FILING CABINETS - 1 DRAWER, 1 SIDE TAB UNIT	SafeTec Insulated Files. 43" side tab filing cabinets - class 350 degree 1 hour rating, H.I.P.A.A. compliant. 1 Drawer, 1 Side Tab Unit, 43"	\$2,829.97
SYS2HD43+1	SAFETEC STORAGE - 43" SIDE TAB FILING CABINETS - 1 DRAWER, 2 SIDE TAB UNITS, ASSEMBLED	SafeTec Insulated Files. 43" side tab filing cabinets - class 350 degree 1 hour rating, H.I.P.A.A. compliant. 1 Drawer, 2 Side Tab Units, Assembled, 43"	\$3,857.68
SYS2HD43+2	SAFETEC STORAGE - 43" SIDE TAB FILING CABINETS - 1 DRAWER, 3 SIDE TAB UNITS, ASSEMBLED	SafeTec Insulated Files. 43" side tab filing cabinets - class 350 degree 1 hour rating, H.I.P.A.A. compliant. 1 Drawer, 3 Side Tab Units, Assembled, 43"	\$4,883.88
SYS3HD43ST	SAFETEC STORAGE - 43" SIDE TAB FILING CABINETS - 2 DRAWERS, 1 SIDE TAB UNIT	SafeTec Insulated Files. 43" side tab filing cabinets - class 350 degree 1 hour rating, H.I.P.A.A. compliant. 2 Drawers, 1 Side Tab Unit, 43"	\$3,766.25
SYS3HD43+1	SAFETEC STORAGE - 43" SIDE TAB FILING CABINETS - 2 DRAWERS, 2 SIDE TAB UNITS, ASSEMBLED	SafeTec Insulated Files. 43" side tab filing cabinets - class 350 degree 1 hour rating, H.I.P.A.A. compliant. 2 Drawers, 2 Side Tab Units, Assembled, 43"	\$4,792.44
SYS4HD43ST	SAFETEC STORAGE - 43" SIDE TAB FILING CABINETS - 3 DRAWERS, 1 SIDE TAB UNIT	SafeTec Insulated Files. 43" side tab filing cabinets - class 350 degree 1 hour rating, H.I.P.A.A. compliant. 3 Drawers, 1 Side Tab Unit, 43"	\$4,358.69

FILE CABINETS

Insulated Lateral / Side Tab

Side Tab Filing Cabinets

ITEM ID	ITEM NAME	ITEM DESCRIPTION	SYSTEC/GSA PRICE
SYS1HD36ST	SAFETEC STORAGE - 36" SIDE TAB FILING CABINETS - 1 SIDE TAB UNIT	SafeTec Insulated Files. 36" side tab filing cabinets - class 350 degree 1 hour rating, H.I.P.A.A. compliant. 1 Side Tab Unit, 36"	\$966.50
SYS1HD36+1	SAFETEC STORAGE - 36" SIDE TAB FILING CABINETS - 2 SIDE TAB UNITS, ASSEMBLED	SafeTec Insulated Files. 36" side tab filing cabinets - class 350 degree 1 hour rating, H.I.P.A.A. compliant. 2 Side Tab Units, Assembled, 36"	\$1,934.51
SYS1HD36+2	SAFETEC STORAGE - 36" SIDE TAB FILING CABINETS - 3 SIDE TAB UNITS, ASSEMBLED	SafeTec Insulated Files. 36" side tab filing cabinets - class 350 degree 1 hour rating, H.I.P.A.A. compliant. 3 Side Tab Units, Assembled, 36"	\$2,901.01
SYS1HD36+3	SAFETEC STORAGE - 36" SIDE TAB FILING CABINETS - 4 SIDE TAB UNITS, ASSEMBLED	SafeTec Insulated Files. 36" side tab filing cabinets - class 350 degree 1 hour rating, H.I.P.A.A. compliant. 4 Side Tab Units, Assembled, 36"	\$3,868.26
SYS2HD36ST	SAFETEC STORAGE - 36" SIDE TAB FILING CABINETS - 1 DRAWER, 1 SIDE TAB UNIT	SafeTec Insulated Files. 36" side tab filing cabinets - class 350 degree 1 hour rating, H.I.P.A.A. compliant. 1 Drawer, 1 Side Tab Unit, 36"	\$2,573.05
SYS2HD36+1	SAFETEC STORAGE - 36" SIDE TAB FILING CABINETS - 1 DRAWER, 2 SIDE TAB UNITS, ASSEMBLED	SafeTec Insulated Files. 36" side tab filing cabinets - class 350 degree 1 hour rating, H.I.P.A.A. compliant. 1 Drawer, 2 Side Tab Units, Assembled, 36"	\$3,539.55
SYS2HD36+2	SAFETEC STORAGE - 36" SIDE TAB FILING CABINETS - 1 DRAWER, 3 SIDE TAB UNITS, ASSEMBLED	SafeTec Insulated Files. 36" side tab filing cabinets - class 350 degree 1 hour rating, H.I.P.A.A. compliant. 1 Drawer, 3 Side Tab Units, Assembled, 36"	\$4,506.05
SYS3HD36ST	SAFETEC STORAGE - 36" SIDE TAB FILING CABINETS - 2 DRAWERS, 1 SIDE TAB UNIT	SafeTec Insulated Files. 36" side tab filing cabinets - class 350 degree 1 hour rating, H.I.P.A.A. compliant. 2 Drawers, 1 Side Tab Unit, 36"	\$3,294.71
SYS3HD36+1	SAFETEC STORAGE - 36" SIDE TAB FILING CABINETS - 2 DRAWERS, 2 SIDE TAB UNITS, ASSEMBLED	SafeTec Insulated Files. 36" side tab filing cabinets - class 350 degree 1 hour rating, H.I.P.A.A. compliant. 2 Drawers, 2 Side Tab Units, Assembled, 36"	\$4,262.72
SYS4HD36ST	SAFETEC STORAGE - 36" SIDE TAB FILING CABINETS - 3 DRAWERS, 1 SIDE TAB UNIT	SafeTec Insulated Files. 36" side tab filing cabinets - class 350 degree 1 hour rating, H.I.P.A.A. compliant. 3 Drawers, 1 Side Tab Unit, 36"	\$3,620.40

Fire Rated Record and Media Safes

ITEM ID	ITEM NAME	ITEM DESCRIPTION	SYSTEC/GSA PRICE
SYS1816CN	SAFETEC STORAGE - RECORD CABINETS - 3.0 cu.ft. - FIRE AND IMPACT RESISTANT	SafeTec Record and Media Safes. Record cabinets - class 350 degree 1 hour rating, fire and impact resistant. 3.0 cu ft, key lock, 1 drawer, 1 adj. shelf	\$2,136.27
SYS1821CN	SAFETEC STORAGE - RECORD CABINETS - 4.0 cu.ft. - FIRE AND IMPACT RESISTANT	SafeTec Record and Media Safes. Record cabinets - class 350 degree 1 hour rating, fire and impact resistant. 4.0 cu ft, key lock, 1 drawer, 1 adj. shelf	\$2,344.08
SYS1826CN	SAFETEC STORAGE - RECORD CABINETS - 4.9 cu.ft. - FIRE AND IMPACT RESISTANT	SafeTec Record and Media Safes. Record cabinets - class 350 degree 1 hour rating, fire and impact resistant. 4.9 cu ft, key lock, 1 drawer, 1 adj. shelf	\$2,527.71
SYS1831CN	SAFETEC STORAGE - RECORD CABINETS - 5.9 cu.ft. - FIRE AND IMPACT RESISTANT	SafeTec Record and Media Safes. Record cabinets - class 350 degree 1 hour rating, fire and impact resistant. 5.9 cu ft, key lock, 2 adj. shelves	\$2,621.41
SYS1844CN	SAFETEC STORAGE - RECORD CABINETS - 8.4 cu.ft. - FIRE AND IMPACT RESISTANT	SafeTec Record and Media Safes. Record cabinets - class 350 degree 1 hour rating, fire and impact resistant. 8.4 cu ft, key lock, 3 adj. shelves	\$2,925.94

FILE CABINETS

Insulated Side Tab / Records and Media Safes

Media Cabinets			
ITEM ID	ITEM NAME	ITEM DESCRIPTION	SYSTEC/GSA PRICE
SYS1816CTS	SAFETEC STORAGE - MEDIA CABINETS - 1.0 cu.ft. EMPTY - FIRE AND IMPACT RESISTANT	SafeTec Record and Media Safes. Media cabinets - class 125 degree 1 hour rating, fire and impact resistant. 1.0 cu ft, key lock, empty	\$2,843.58
SYS1816CS+	SAFETEC STORAGE - MEDIA CABINETS - 1.0 cu.ft. 2 DRAWERS - FIRE AND IMPACT RESISTANT	SafeTec Record and Media Safes. Media cabinets - class 125 degree 1 hour rating, fire and impact resistant. 1.0 cu ft, key lock, 2 multi-media drawers	\$3,146.60
SYS1821CTS	SAFETEC STORAGE - MEDIA CABINETS - 1.5 cu.ft. EMPTY - FIRE AND IMPACT RESISTANT	SafeTec Record and Media Safes. Media cabinets - class 125 degree 1 hour rating, fire and impact resistant. 1.5 cu ft, key lock, empty	\$3,272.04
SYS1821CS+	SAFETEC STORAGE - MEDIA CABINETS - 1.5 cu.ft. 3 DRAWERS - FIRE AND IMPACT RESISTANT	SafeTec Record and Media Safes. Media cabinets - class 125 degree 1 hour rating, fire and impact resistant. 1.5 cu ft, key lock, 3 multi-media drawers	\$3,726.20
SYS1826CTS	SAFETEC STORAGE - MEDIA CABINETS - 2.0 cu.ft. EMPTY - FIRE AND IMPACT RESISTANT	SafeTec Record and Media Safes. Media cabinets - class 125 degree 1 hour rating, fire and impact resistant. 2.0 cu ft, key lock, empty	\$3,698.24
SYS1826CS+	SAFETEC STORAGE - MEDIA CABINETS - 2.0 cu.ft. 4 DRAWERS - FIRE AND IMPACT RESISTANT	SafeTec Record and Media Safes. Media cabinets - class 125 degree 1 hour rating, fire and impact resistant. 2.0 cu ft, key lock, 4 multi-media drawers	\$4,303.53
SYS1831CTS	SAFETEC STORAGE - MEDIA CABINETS - 2.4 cu.ft. EMPTY - FIRE AND IMPACT RESISTANT	SafeTec Record and Media Safes. Media cabinets - class 125 degree 1 hour rating, fire and impact resistant. 2.4 cu ft, key lock, empty	\$4,269.52
SYS1831CS+	SAFETEC STORAGE - MEDIA CABINETS - 2.4 cu.ft. 5 DRAWERS - FIRE AND IMPACT RESISTANT	SafeTec Record and Media Safes. Media cabinets - class 125 degree 1 hour rating, fire and impact resistant. 2.4 cu ft, key lock, 5 multi-media drawers	\$5,025.19
SYS1844CTS	SAFETEC STORAGE - MEDIA CABINETS - 3.7 cu.ft. EMPTY - FIRE AND IMPACT RESISTANT	SafeTec Record and Media Safes. Media cabinets - class 125 degree 1 hour rating, fire and impact resistant. 3.7 cu ft, key lock, empty	\$4,831.74
SYS1844CS+	SAFETEC STORAGE - MEDIA CABINETS - 3.7 cu.ft. 7 DRAWERS - FIRE AND IMPACT RESISTANT	SafeTec Record and Media Safes. Media cabinets - class 125 degree 1 hour rating, fire and impact resistant. 3.7 cu ft, key lock, 7 multi-media drawers	\$5,889.67
SYS1856CTS	SAFETEC STORAGE - MEDIA CABINETS - 4.8 cu.ft. EMPTY - FIRE AND IMPACT RESISTANT	SafeTec Record and Media Safes. Media cabinets - class 125 degree 1 hour rating, fire and impact resistant. 4.8 cu ft, key lock, empty	\$5,409.07
SYS1856CS+	SAFETEC STORAGE - MEDIA CABINETS - 4.8 cu.ft. 8 DRAWERS - FIRE AND IMPACT RESISTANT	SafeTec Record and Media Safes. Media cabinets - class 125 degree 1 hour rating, fire and impact resistant. 4.8 cu ft, key lock, 8 multi-media drawers	\$6,617.38
SYS1821CPX	SAFETEC STORAGE - DATA BACKUP SYSTEM STORAGE	SafeTec Record and Media Safes. Data backup system storage - class 125 degree 1 hour rating, H.I.P.A.A compliant. 1.29 cu ft, key lock, empty - fire and impact resistant	\$3,401.26

Storage Media Safes			
ITEM ID	ITEM NAME	ITEM DESCRIPTION	SYSTEC/GSA PRICE
SYS2532CTS	SAFETEC STORAGE - MEDIA SAFES - 4.8 cu.ft.	SafeTec Record and Media Safes. Media safes - fire and impact resistant. 4.8 cu ft safe, comb. lock, empty, 125° 1 hour rating	\$6,408.82
SYS2557CTS	SAFETEC STORAGE - MEDIA SAFES - 9.3 cu.ft.	SafeTec Record and Media Safes. Media safes - fire and impact resistant. 9.3 cu ft, combo lock, empty, classes 150° & 125° 1 hour rating	\$7,735.77
SYS4068CTS	SAFETEC STORAGE - MEDIA SAFES - 20.1 cu.ft.	SafeTec Record and Media Safes. Media safes - fire and impact resistant. 20.1 cu ft safe, comb. lock, empty, class 125° 1 hour rating	\$12,670.28
SYM CASE	SAFETEC STORAGE - MEDIACASE PORTABLE MEDIA STORAGE	SafeTec Mediacase. Mediacase portable media storage. Class 125 degree removable media insert for use in class 350 degree products	\$341.56

Vault & File Room Doors			
ITEM ID	ITEM NAME	ITEM DESCRIPTION	SYSTEC/GSA PRICE
SYS7832-1 HR	SAFETEC STORAGE - INSULATED VAULT AND FILE ROOM DOORS - 78"X32" INSULATED FILE ROOM DOOR - 1 HOUR RATING	SafeTec Insulated Vault and File Room Doors. Specify right or left swing. 78"X32" Insulated File Room Door, 1 hour rating	\$4,732.75
SYS7840-1 HR	SAFETEC STORAGE - INSULATED VAULT AND FILE ROOM DOORS - 78"X40" INSULATED FILE ROOM DOOR - 1 HOUR RATING	SafeTec Insulated Vault and File Room Doors. Specify right or left swing. 78"X40" Insulated File Room Door, 1 hour rating	\$5,276.07
SYS7832-2 HR	SAFETEC STORAGE - INSULATED VAULT AND FILE ROOM DOORS - 78"X32" INSULATED VAULT DOOR - 2 HOUR RATING	SafeTec Insulated Vault and File Room Doors. Specify right or left swing. 78"X32" Insulated Vault Door, 2 hour rating	\$4,977.58
SYS7840-2 HR	SAFETEC STORAGE - INSULATED VAULT AND FILE ROOM DOORS - 78"X40" INSULATED VAULT DOOR - 2 HOUR RATING	SafeTec Insulated Vault and File Room Doors. Specify right or left swing. 78"X40" Insulated Vault Door, 2 hour rating	\$5,660.71



Implementing a barcode tracking software system is one of the fastest and easiest ways of keeping track of your papers, documents and files, improving your paper trails, and helping you maintain your current filing system. SYSTEC has a barcode tracking system that helps improve office efficiency by tracking all documents with a custom bar code label.

Our barcode scanners, barcode readers, and POS barcode labeling equipment eliminates lost files and reduces redundant data entry throughout the record management process. Our barcode labeling, barcode tracking and barcode reading solutions are fully integrated with color label print features and document imaging capabilities that provide complete turn-key bar code filing systems and information management solutions.

Tracking Software

ITEM ID	ITEM NAME	ITEM DESCRIPTION	SYSTEC/GSA PRICE
SYIXSE	SYSTRAC SOFTWARE LICENSE	SYSTRAC SOFTWARE LICENSE. Server license, SQL server or Oracle data base, three concurrent seats, one Intermec 1800 scanner kit w/silver service, one printed manual, 90-day service plan.	\$22,077.33
SYIXSEA	SYSTRAC SOFTWARE LICENSE (ACCESS ONLY)	SYSTRAC SOFTWARE LICENSE (ACCESS ONLY). Server license, Access database, three concurrent seats, one Intermec 1800 scanner kit w/silver service, one printed manual, 90-day service plan.	\$16,554.41
SYIXEX	SYSTRAC EXPRESS SOFTWARE LICENSE (ACCESS ONLY)	SYSTRAC EXPRESS SOFTWARE LICENSE (ACCESS ONLY). Stand-alone license, Access database, one Intermec 1800 scanner kit w/silver service, one printed manual, 90-day service plan.	\$5,508.56
SYIXEV	SYSTRAC EVIDENCE (ACCESS ONLY)	Stand-alone license, Access database.	\$1,909.57
SYIXWEB	SYSTRAC WEB SOFTWARE LICENSE	SYSTRAC WEB SOFTWARE LICENSE. Server license, 25 concurrent seats, 6 dataviews, one Intermec 1800 scanner kit w/silver service.	\$49,768.51
SYIXWEBE	SYSTRAC WEB EXPRESS SOFTWARE LICENSE	SYSTRAC WEB EXPRESS SOFTWARE LICENSE. Server license, 10 concurrent seats, 4 dataviews, one Intermec 1800 scanner kit w/silver service.	\$35,406.05
SYIXMA	DOCUMENT TRACKING SOFTWARE- ANNUAL MAINTENANCE	ANNUAL MAINTENANCE	\$2,222.00
SYIXMAE	DOCUMENT TRACKING SOFTWARE- SEMI-ANNUAL MAINTENANCE	SEMI-ANNUAL MAINTENANCE	\$717.88
SYIXSL25	DOCUMENT TRACKING SOFTWARE- ADDITIONAL SEAT LICENSE (1-25)	ADDITIONAL SEAT LICENSE (1-25)	\$737.03
SYIXSL50	DOCUMENT TRACKING SOFTWARE- ADDITIONAL SEAT LICENSE (26-50)	ADDITIONAL SEAT LICENSE (26-50)	\$612.59
SYIXSL100	DOCUMENT TRACKING SOFTWARE- ADDITIONAL SEAT LICENSE (51-133)	ADDITIONAL SEAT LICENSE (51-133)	\$552.29
SYIXSLSL	DOCUMENT TRACKING SOFTWARE- ADDITIONAL SEAT LICENSE (> 133)	SITE LICENSE (> 133)	\$38,287.15
SYIXDV	DOCUMENT TRACKING SOFTWARE- ADDITIONAL DATA VIEWS	ADDITIONAL DATAVIEWS	\$3,350.13
SYIXIM	DOCUMENT TRACKING SOFTWARE- IMAGING MODULE	IMAGING MODULE	\$3,350.13
SYIXEM	DOCUMENT TRACKING SOFTWARE- E-DOCS MODULE	E-DOCS MODULE	\$4,785.89
SYIX1800	SCANNING HARDWARE - INTERMEC 1800 TETHERED SCANNER KIT	INTERMEC 1800 TETHERED SCANNER KIT. Power supply w/DC jack, one year silver 2-day replacement service plan.	\$545.59
SYIX1802	SCANNING HARDWARE - INTERMEC 1802 CORDLESS SCANNER KIT	INTERMEC 1802 CORDLESS SCANNER KIT. Scanner battery, charging station, setup CD, manual, one year silver 2-day replacement services plan.	\$1,340.05
SYIX2410	SCANNING HARDWARE - INTERMEC 2410 PORTABLE SCANNER KIT	INTERMEC 2410 PORTABLE SCANNER KIT. 2410 scanner gun, backup battery, com dock, one year silver 2-day replacement service plan, 9F-9F, null-modem, 5-wire, SYRS232, hand strap, user manual, power supply, power cord for charger.	\$2,392.95
SYIX2420	SCANNING HARDWARE - INTERMEC 2420 PORTABLE SCANNER KIT	INTERMEC 2420 PORTABLE SCANNER KIT. 2420 scanner gun, rugged casing, backup battery, com dock, one year silver 2-day replacement service plan, 9F-9F, null-modem, 5-wire, SYRS232, hand strap, user manual, power supply, power cord for charger.	\$3,062.97
SYIXRFR	SCANNING HARDWARE - RFID READER	REID (RADIO FREQUENCY) READER	\$1,526.70
SYIXRFP	SCANNING HARDWARE - RFID PORTABLE DEVICE	REID PORTABLE DEVICE	\$5,738.29

Data Conversions

ITEM ID	ITEM NAME	SYSTEC/GSA PRICE
SYIXDC	Data Conversion (day)	\$1,435.77
SYIXIT	Installation and Training (day)	\$1,435.77
SYIXITR	Remote (web based) Installation and training (per hour)	\$119.65

SOFTWARE

Tracking Software / Data Conversions



Label print systems help organize and sequence your records for accurate filing and fast data retrievals. Create custom design labels, color coded labels and print labels as needed with your own on-demand labeling system.

Whether it is bar code tracking labels, color coded labels or both, on-demand labels can be designed to meet your on-demand label printing needs and, once integrated, will help eliminate redundant data entry.

Label Print Software

ITEM ID	ITEM NAME	ITEM DESCRIPTION	SYSTEC/GSA PRICE
SY02270	LABEL PRINT SOFTWARE	LABEL PRINT SOFTWARE. One seat Label Printing software, stand-alone installation. Add #02245 for maintenance & support (required). Order #02136 for label design. Seats are Label Print only. Add #SY0220 for design capability.	\$598.24
SY02271	LABEL PRINT NETWORK	LABEL PRINT NETWORK. *PROMOTION* Includes 3 concurrent seats. Add # 02245 for maintenance & support (required). Order # 02136 for label design. Seats are Label Print only. For local area network (LAN) installation only. Add # SY02200 for design capability.	\$1,502.77
SY02272	LABEL PRINT SOFTWARE - ADDITIONAL NETWORK CONCURRENT SEAT	ADD'L NETWORK CONCURRENT SEAT. For Label Print. LAN installation only. Add #SY02245 for maintenance & support (required)	\$230.20
SY02200	LABEL PRINT SOFTWARE - LABEL PRINT DESIGN	LABEL PRINT DESIGN. One seat Label Print and Design software, stand-alone installation, full label design and printing functionality. Add #SY02245 for maintenance & support (required)	\$3,010.33



ARCHIVING /RETENTION PLANNING

The archival process is a vital phase in the document management lifecycle. To ensure a comprehensive document management system, our professionals will identify your individual retention needs; write policies and procedures; develop an archival system with tracking capabilities; recommend files to purge or retain; and provide products to implement the system.



BARCODE /RFID TRACKING

Tracking provides an organization with complete control over all of their paper and image-based information. We will organize all information; eliminate redundant information; implement an indexing system fully integrated with color-coded and barcode labeling; provide RFID tags, readers and tracking system as required; train users; and implement guidelines.



CONSULTING

When a client is looking for expertise in developing a plan for their document management program, we can help assess record management needs by identifying business process and document lifecycles; prepare a strategic records management plan with detailed implementation process; identify and analyze future technology needs; research and recommend a retention schedule; and arrange training for users to ensure program is fully and efficiently utilized by all.



DOCUMENT AUDITS

Audits can be done electronically or manually, depending on the client's situation. The process involves identifying necessary audit criteria; analyzing each record against criteria; entering document and/or file content into a database or manually checking against criteria checklist.



FILE CONVERSION

Conversion is a process that transforms documents from one paper storage application to another. This may include converting files to a color-coded and barcoded labeling system by applying labels and linking to a tracking system; transferring of top-tab to side-tab files; relabeling and classifying; converting from one file system to another, i.e. alpha to numeric or terminal digital; consolidating and merging of multiple records into a single classification folder and/or multiple records storage sites into one centralized location.



FILE INVENTORY AND DATABASE DEVELOPMENT

As a first step in helping a client get their document management system to the next level, we will conduct a physical document or file inventory; validate the inventory; and collect data on a laptop computer to record an accurate database of the entire file system.



FILING SYSTEM DESIGN

A comprehensive filing system will make document retrieval and refiling more efficient. Our professionals will design a filing system by first determining how records are accessed and by what fields of information; prioritize information and design an appropriate labeling system; and provide suggestions on improving storage efficiency if needed.



IMAGING CONVERSION

Imaging requires extensive document preparation at the start of the process. We will identify documents for electronic or micrographic conversion; prepare paper documents by removing from folders, removing staples or other fasteners, copy odd-sized documents to common page size for scanning; determine indexing; scan and reassemble paper documents; create and implement efficient database program suited to individual needs; manage records conversion on-site or off-site.



MERGING AND INTERFILING RECORDS

Merging files or filing systems may be required as a part of a file conversion, relocation or centralization. Services include moving files as needed; relabeling; completing a document audit; and physically interfiling documents or files in the proper location.



RECORDS MANAGEMENT OUTSOURCING

Some clients have the need to outsource their document management functions, either on a full-time or part-time basis. We can provide regular on-site support for ongoing refiling, purging, labeling, retention planning or any other daily management or operational needs.



RELOCATIONS

Timely and accurate relocation of files with minimal interruption is vital to an organization's workflow. Our relocation service includes mapping record locations; sequencing and labeling each series; physical unloading, transporting and relocating of files; and conducting a final records inventory.



From document management to file system design, office space planning to Sarbanes-Oxely consulting, SYSTEC offers all of the services you need to improve your document management systems.

Records Management Service Rates

ITEM ID	LABOR CATEGORY	DESCRIPTION	SYSTEC/GSA PRICE
SY- 504-A	SENIOR RECORDS MANAGEMENT CONSULTANT	<p>Minimum/General Experience: 10-15 years of related records management experience.</p> <p>Functional Responsibility: responsible for the development of a comprehensive records management program. Key responsibilities may include designing and overseeing a detailed records inventory, performing staff interviews to gather needed information, development of file classification schemes (on a departmental level or company-wide), development and research of record retention schedules, establishment of policies and procedures for records management programs (from record creation to destruction), and overall development of the implementation plan.</p> <p><i>Minimum Education: requires a Bachelor's degree and/or Certified Records Manager (CRM) designation from the Association of Records Managers and Administrators (ARMA).</i></p>	\$ 139.75/hr
SY- 504-B	RECORDS MANAGEMENT CONSULTANT	<p>Minimum/General Experience: 5-10 years of related records management experience.</p> <p>Functional Responsibility: responsible for the development of a particular records management strategy within a client organization. Can assist the Senior Consultant by developing the comprehensive project plans including milestones for performance. Directs all implementation team members by monitoring activities and financial performance. Interacts with external clients as well as executives to communicate project status throughout the project's life cycle. Key responsibilities may include system design and consultation, implementation design and consultation, and workflow analysis.</p> <p><i>Minimum Education: requires a Bachelor's degree or equivalent.</i></p>	\$ 124.43/hr
SY- 504-C	PROJECT COORDINATOR	<p>Minimum/General Experience: 2-5 years of related project coordination experience in a service-oriented environment</p> <p>Functional Responsibility: responsible for the tactical design and programming for each Professional Business Services division project. Identifies, acquires and utilizes the necessary resources to meet specific project goals. Communicates tactical needs to field representatives to ensure project success. Coordinates and maintains schedule data to ensure correct timing for deliverables.</p> <p><i>Minimum Education: requires a Bachelor's degree or equivalent.</i></p>	\$ 86.15/hr
SY- 504-D	SENIOR PROJECT MANAGER	<p>Minimum/General Experience: 5-10 years of related project management experience.</p> <p>Functional Responsibility: responsible for the successful implementation of projects at field locations. Key responsibilities include training and development of Project Managers, job set-up and workflow development, conducting staff orientations, staff assignment, high-level auditing, high-level progress reporting in order to ensure quality and productivity standards are maintained while meeting client schedules. Prepares employee performance evaluations and handles field-based human resource issues. High level of client visibility to communicate progress and ongoing project changes throughout the cycle.</p> <p><i>Minimum Education: requires a Bachelor's degree or equivalent experience.</i></p>	\$ 96.68/hr

Records Management Service Rates

ITEM ID	LABOR CATEGORY	DESCRIPTION	SYSTEC/GSA PRICE
SY- 504-E	DATA CONVERSION SPECIALIST	<p>Minimum/General Experience: 1-3 years of related technical and field experience.</p> <p>Functional Responsibility: when needed, data is taken from the client's host system and manipulated to meet specific criteria needed for tracking and/or label production applications.</p> <p><i>Minimum Education: requires a Bachelor's degree or equivalent experience.</i></p>	\$ 96.68/hr
SY- 504-F	LABEL DESIGN SPECIALIST	<p>Minimum/General Experience: 1-3 years of related technical and field experience.</p> <p>Functional Responsibility: based upon criteria and objectives developed by Records Management Consultants / Sales Consultants, provides technical programming and graphic layout of record identification label designs. Often requires multiple revisions; may perform color mapping in order to match existing color-coded systems.</p> <p><i>Minimum Education: requires a Bachelor's degree or equivalent experience.</i></p>	\$ 80.40/hr
SY- 504-G	INSTALLATION CONSULTANT	<p>Minimum/General Experience: 10-15 years of related field experience.</p> <p>Functional Responsibility: reviews and/or recommends overall system design and Project Workflow Plan. Reviews and approves all system drawings, creates milestones for successful project completion. In special circumstances, may provide support to the field by performing special surveys or site visits to determine project feasibility.</p> <p><i>Minimum Education: requires a Bachelor's degree or equivalent experience.</i></p>	\$ 118.69/hr
SY- 504-H	INSTALLATION MANAGER	<p>Minimum/General Experience: 3-5 years field experience.</p> <p>Functional Responsibility: on a regional basis, responsible for overseeing the entire installation project. Supervises all crew on site functions as the key client contact. Coordinates shipment of product, receiving at work site, labor requirements, and human resource issues in the field. Responsible for quality project results as well as timely, on-budget completion according to the Project Plan.</p> <p><i>Minimum Education: requires a Bachelor's degree or equivalent</i></p>	\$ 124.43/hr
SY- 504-I	RECORDS CLERK	<p>Minimum/General Experience: 1-3 years office or administrative experience.</p> <p>Functional Responsibility: working under the direct supervision of the Project Manager and/or Project Supervisor, required to carry out the tactical tasks as described in the project plan. Tasks may include loading and unloading records, delivering records to the work area, matching records, verifying the match, document preparation, scanning records, applying labels, creating boxes, and packing and labeling boxes. Must meet established goals for productivity and accuracy on an hourly and daily basis. Receives comprehensive training and close supervision throughout the project.</p> <p><i>Minimum Education: requires an Associate's degree or equivalent</i></p>	\$ 34.46/hr

Records Management Service Rates

ITEM ID	LABOR CATEGORY	DESCRIPTION	SYSTEC/GSA PRICE
SY- 504-J	PROJECT MANAGER	<p>Minimum/General Experience: 1-5 years of related experience.</p> <p>Functional Responsibility: working under the Senior Project Manager, responsible for the successful implementation of projects at field locations. Key responsibilities include ongoing staff training, workflow analysis and reporting, handling daily staffing issues, in-depth auditing, and daily progress reporting to ensure quality and productivity standards are maintained while meeting client schedules. Responds to specific client needs and questions, and manages the project facilities as dictated by the project plan.</p> <p><i>Minimum Education: requires a Bachelor's degree or equivalent experience.</i></p>	\$ 90.93/hr
SY- 504-K	PROJECT SUPERVISOR	<p>Minimum/General Experience: 0-2 years of related experience on specific project-related matters.</p> <p>Functional Responsibility: working under the Project Manager and/or Senior Project Manager, responsible for managing a specific portion of the project at a field location. Key responsibilities include workflow analysis and reporting, in-depth auditing, training and re-training as needed and daily progress reporting to ensure quality and productivity standards are maintained while meeting client schedules. In conjunction with the Project Manager, communicates directly with the client contact on specific project-related matters.</p> <p><i>Minimum Education: requires a Bachelor's degree or equivalent experience.</i></p>	\$ 118.69/hr
SY- 504-L	TECHNICAL CONSULTANT	<p>Minimum/General Experience: 3-5 years of related experience, preferably in the Records and Information Management field.</p> <p>Functional Responsibility: performs comprehensive business analysis in order to make high-level recommendations as to what technical features and functionalities are necessary in order to satisfy key client / project objectives. Focused on solving business problems; may provide company-wide consulting including equipment/ software design, evaluation, configuration management procedures, and statistical analysis. Incumbents are responsible for the installation, development, implementation and customization of hardware and software elements.</p> <p><i>Minimum Education: requires a Bachelor's degree or equivalent experience.</i></p>	\$ 161.76/hr
SY- 504-M	TECHNICAL ANALYST	<p>Minimum/General Experience: 1-3 years of related technical and field experience.</p> <p>Functional Responsibility: on a client-direct basis, provides entry-level technical consulting in the definition, design and creation of a file tracking database or print system solution. May assist sales people in the solution development and by performing technical demonstrations in the field. May be responsible for the installation, development, implementation and customization of hardware and software elements needed. Develops and conducts basic training programs (internal and external) to ensure solutions are well-understood by the client staff and supported by the organization. Provides ongoing post-implementation technical support.</p> <p><i>Minimum Education: requires a Bachelor's degree or equivalent experience.</i></p>	\$ 103.38/hr

SERVICES

Records Management Service Rates

Records Management Service Rates

ITEM ID	LABOR CATEGORY	DESCRIPTION	SYSTEC/GSA PRICE
SY-504-N	RECORDS & ADMINISTRATIVE TECHNICIAN	<p>Minimum/General Experience: 1-3 years office or administrative experience.</p> <p>Functional Responsibility: working under the direct supervision of the Project Manager and/or Project Supervisor, required to carry out the more records-intensive tasks as described in the project plan. Tasks may include matching records, verifying the match, system audits, classifying and auditing documents, re-sorting labels, project documentation, and purging records. Must meet established goals for productivity and accuracy. Receives comprehensive training and close supervision throughout the project.</p> <p><i>Minimum Education: requires a Associate's degree or equivalent</i></p>	\$ 37.33/hr
SY-504-O	DATA ENTRY SPECIALIST	<p>Minimum/General Experience: 1-3 years office or administrative experience.</p> <p>Functional Responsibility: working under the direct supervision of the Project Manager and/or Project Supervisor, required to carry out all data entry and verification functions at the client site as described in the project plan. Must meet established goals for productivity and accuracy of entries.</p> <p><i>Minimum Education: requires a Associate's degree or equivalent</i></p>	\$ 37.33/hr
SY-504-P	STORAGE SYSTEM INSTALLER	<p>Minimum/General Experience: 1-3 years technical field experience.</p> <p>Functional Responsibility: working under the direct supervision of the Installation Manager, required to carry out all necessary tasks in order to successfully complete the installation per the project plan. Tasks may include product unpack and stage, assembly of product, and clean-up of work area. Receives comprehensive training and close supervision throughout the project. Must meet established goals for productivity, accuracy of work, and conform with all safety guidelines.</p> <p><i>Minimum Education: requires a Associate's degree or equivalent</i></p>	\$ 56.47/hr
SY-504-Q	INFORMATION RELOCATION SUPERVISOR	<p>Minimum/General Experience: 3-5 years supervisory and record management experience.</p> <p>Functional Responsibility: working in conjunction with the Project Manager and/or Project Supervisor, required to direct all move-related tasks required to satisfy the requirements of the project plan. Key responsibilities include ongoing staff training, workflow analysis and reporting, handling daily staffing issues, and daily progress reporting to ensure quality and productivity standards are maintained while meeting client schedules. May respond to specific client needs and questions relating to workflow, timing, and schedule requirements. Responsible for ensuring all Information Relocation Specialists are meeting the established goals for productivity, accuracy, and are conforming with all safety guidelines.</p> <p><i>Minimum Education: requires a Bachelor's degree or equivalent</i></p>	\$ 70.83/hr
SY-504-R	INFORMATION RELOCATION SPECIALIST	<p>Minimum/General Experience: 1-3 years administrative or records management experience.</p> <p>Functional Responsibility: working under the direct supervision of the Project Manager, Project Supervisor, and/or Information Relocation Supervisor, required to carry out all necessary tasks in order to successfully complete a detailed file relocation per the project plan. Tasks may include product unpack and stage, packing of records, securing on transport vehicles, and unpacking according to the established file mapping scheme. Receives comprehensive training and close supervision throughout the project. Must meet established goals for productivity, accuracy of work, and conform with all safety guidelines.</p> <p><i>Minimum Education: requires a Associate's degree or equivalent</i></p>	\$ 56.47/hr

Rental Equipment

ITEM ID	ITEM NAME	SYSTEC/GSA PRICE
SY-100	Straight Truck / Semi-Trailer	\$287.10
SY-200	File Carts	\$11.70
SY-300	Panel Carts	\$9.90
SY-400	Stacking Move Crates	\$3.60
SY-450	Stacking Move Crate Dolly	\$2.25
SY-500	Shrink Wrap / Roll	\$83.70
SY-600	Laptop Computers With Keyboard	\$94.50
SY-700	Masonite Floor Covering / Sheet	\$6.70

ONE CALL

IS ALL YOU NEED
TO FIND A COMPLETE SOLUTION

RELY ON A
SINGLE SOURCE
FOR YOUR INFORMATION
AND MATERIAL
MANAGEMENT NEEDS

SYSTEC specializes in the design and delivery of fully integrated or individualized solutions. From analysis and consulting to products and services, we can support all of your needs.



SYSTEC™

systems ♦ technology

info @ systecgroup.com

www.systecgroup.com

1-877-7SYSTEC



Consulting & Services



Filing Products



Technology Solutions



Storage & Shelving

www.SYSTECPROUP.com



SYSTEC™

systems ♦ technology

info @ systecgroup.com

www.systecgroup.com

1-877-7SYSTEC

Copyright © 2008 SYSTEC
0313-SY-0207